

Jan-Feb 1980

Daylight



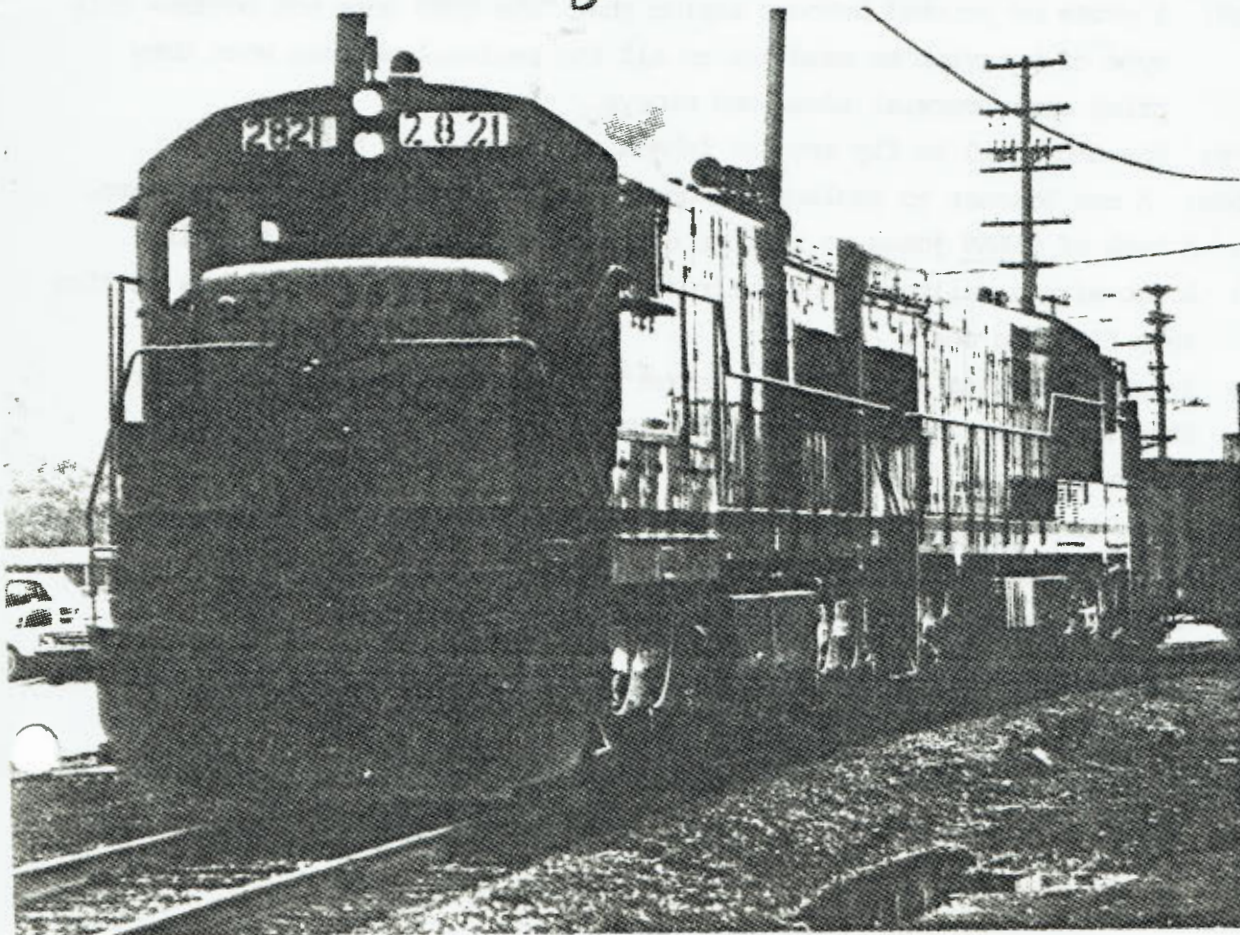
Well here it is, the first month of 1980. Who knows what 1980 will bring for the railroad scene? We do know that Superliners will (we hope) take over most of the long haul routes for Amtrak, but we don't know what will happen to The Rock Island lines, and the Milwaukee road. The WP is in for big changes too, and the BN. The '80s promise to be exciting and changing for the railfan/modeler, its great to be a part of it. Happy New Year everyone!

The Daylight is the official publication of the Western Region of the TAMR. Published bi-monthly, single issue .75¢ Yearly \$3.50.

Editor: Gary R. Gardner
2365 Campus Dr.
SLC UT 84121
(801)-943-6629

Model Dpt: Tom Gasior
11800 Pheasant Ln
Hopkins MN 55343

Gary



UP U-30-Cs lead
the GCM through
Stockton CA in
November 1979

Brian Lynch

TRACK ONE

IDEAS AND OPINIONS

Sorry about the delay in this issue getting to you, please forgive me. With the Hollidays, and our trip to Denver a week or so ago, and finals and my job (I just helped to put the latest FM station in Salt Lake City on the air) I have been quite buisy. So I hope you understand and are not too mad.

John McGreevy, Jim Murphy and myself just completed what was a great trip to Denver and back on the Rio Grande Zephyr this past week, of which you will be hearing of in the next issue. (that is a good enough reason in its self to re-subscribe if you are due to, see back cover for a list.)

Speaking of the next issue, here is the line up: Tom Millsap and Brian Shishido have put together a marvelous piece on Los Angeles Union Passenger Terminal; John McGreevy will fill us in on the Denver excursion; Steve Panza has an "April Fools story; plus the regulars, MofW, Photo Stop, Photos and much more.

The national TAMR, (the big guys back in Chi town) gave out Christmas gifts last issue of the Hotbox, and I hope they don't mind if I borrow their idea here.

Jim Murphy: A portable scale to weigh all of those big SP drags to find out how much they really weigh.

Mark Kaszinak: A gross of printed letters saying that "the TAMR does not condone this type of behavior" to send out to all the regional editors when they print controversial ideas and stories.

John McGreevy: His own DC-10 to fly arround Tehachipi in and spot trains.

Brian Shishido: A new Bearcat to replace the one he left lying in a ditch somewhere.

Tom Millsap: A book of CLEAN jokes to tell me so that I can use them on the air.

Brian Lynch: A job with a railroad, any railroad so he can make 35,000 dollars sitting in a firemans seat.

Dave Harmer: A lapel pin that says "I Love Amtrak" to wear on the US Senate floor this summer to infuriate Sen Orrin Hatch and make freinds with Sen Harley Staggers.

Gerry Dobey: A job in a real radio station so he can see how the rest of us sweat it out.

Steve Panza: A book of McDonalds gift certificates.

Tom Gasior: Wool underwear to take on cold Minnesota railfan trips.

Thats it, my late Christmas gifts, My apologies to Chicago brass for stealing their ideas.

####

the tamr

what you allways wanted to know
Gerry Dobey, TAMR sec.

Looking at the past region membership list, I noticed that several of you are not TAMR members. Now perhaps there are many reasons for this fact, some may be lack of enough funds to join, or lack of interest in joining a national association such as the TAMR. However I feel that one of the biggest may be a lack of knowledge on just what the TAMR has to offer to you, the prospective member. Thus I am writting this in hopes that it will encourage some of you to join us, or give you the incentive to write for more information.

The Teen Association of Model Railroading as it's name implies, is an association which is devoted to helping the teenage model railroaders in the hobby. We started in Oregon with a loosely organized group of young model railroaders in 1963. Interest in the idea of having an association such as the TAMR spread, and I am happy to report that the TAMR is now a national association not only having members in the US but also in Canada and abroad.

One main reason for the existance of the TAMR is due to the problem of the teenage model railroader being left out in the cold. Unless you are accompanied by a parent or older friends, most teenagers usually find themselves out of place at NMRA doings, conventions and other meets. Most adult model railroaders do not take the teenage modelers seriously mainly because they have not seen some of the great things we can do in model railroading. The youth in modeling award is one example of this. The TAMR provides the teenage modeler with the companionship of others of his/her own age who can understand his/her problems. The teenage modeler can find a place that is comfortable in the TAMR where his/her ideas will be respected by others.

We do provide numerous services to our members. First and foremost is our off-set printed publication--the TAMR HOTBOX--billed as the Un-Magazine of Model Railroading, contains many articles of interest to all of the members.

The Hotbox is issued every other month and it usually contains articles on members layouts, railfanning expeditions, breif histories, and techniques, along with photos and editorial comments. The Hotbox is written entirely by our membership for the membership.

We also feature a Pass Exchange committee, Photo Exchange, Member Aid Committee, Question and Answer column, Hotbox article reprint service and special TAMR archives service.

Each year we also hold a nagional convention for our members to attend. The price is low, and the activities are numerous, and are focused on our teenage members.

This is just a brief listing of what the TAMR is really like. The simple fact however is that we are the ONLY national teenage association for young model railroaders. And we think you need us as much as we need you. It's that simple. We need you support to continue as a strong and viable association for young modelers, present and future ones.

If you think you would like to give the TAMR a try, I encourage you to send a \$5.00 check made out to the TAMR to me. Your benefits will start immediately. Or if you would like a bit more information, please write to TAMR c/o Lone Eagle Payne, 1028 Whaley Rd. Rt #4, New Carlisle, OH 45344. Thanks for reading this, and I do hope to see more of you become TAMR members.

Gerry Dobey
TAMR Secretary
145 E. Kenilworth Ave
Villa Park IL 60181

What Gerry has outlined here is just the tip of the iceberg of what the TAMR offers, I know because I am a member. I urge you to give it a try. The Hotbox is more of a model centered magazine while the Daylight centers on railfanning. The two make excelent companions, as they are issued on alternate months. Give it a try, you will like it! (wow I cant believe I just used that rotten cliché) GRG

M of W

MODELING HINTS BY TOM GASIOR

Well Kiddies, this issue's article will explain how to take six Tyco 0-4-0's and kitbash them into a big boy! Oh well, I got to have fun sometime too ya know, back to the buisness at hand.

This is the Western Region paper so I'll discuss typical western motive power. The SD's, anything from SD-9's to SD-50's (yes SD-50's, just look in the recent issue of trains) The numero uno in the SD department though is the SD40-2. The Union Pacific has quite a fleet and the Burlington Northern has more SD40-2's than the Rock Island or Milwaukee road have total units, and our Northern neighbor the Canadian Pacific has even more. Only the GP38-2 has out sold it. Now if you were a model manufacturer, wouldn't you make something everybody could use! Well they don't, The only SD40-2 available is a brass one made by Alco, and its a little out of almost everyones price range, at least if you want a fleet of them!

So we are left to ourselves. We could wait for AHM's SD40 and start from there, but we could wait for another year or so too! Or we could kitbash existing models to come up with a pretty accurate model. One of the model mags told us how to do it about 3 years ago. I used this method to build most of my SD40-2's. In the next issue, I will explain how to build your own SD40-2's using my examples and explaining the drawbacks. If you have any comments please write and we will discuss your methods in this coulumn compaired to everyone elses. You can find my address on the front cover. Stay tuned diesel fans!

WARS News:

New Members,

Claude Morelli and his MD&G in HO and G&J HO n3
Patrick Tinnes and his C.O.W. in HO

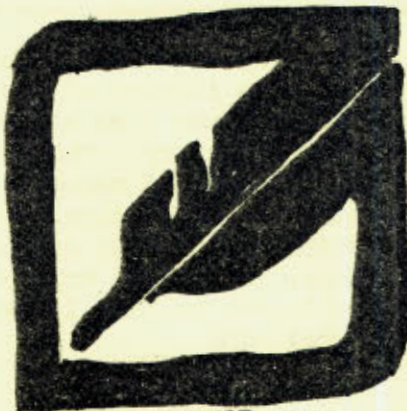
Well it looks like WARS is shaping up fast. The map shows the west coast pretty well developed. We need somebody who has a railroad that runs from California west or Denver and Salt Lake City eastward. The only state without a cross state railroad is Wyoming. California and New Mexico have the most trackage so far. Remember that trackage rights are first come first served! A map is possible next issue, maybe.

For new members, and those who don't know what is going on yet, let me explain.

WARS is the accronym for Western Area Railroad System. It is an organization of model railroaders who have formed this orginazation. It opporates in much the same way as the Chessie System which is the C&O, B&O, WM and some shortilines, and Family Lines which is made up of L&N, SCL, Georgia RR, Clinchfield, and WPR. It is essentially a merger where all roads keep their own identity, but pool trackage rights and, in WARS case, cabooses and cars.

It is a nice way to get to know other members and have some fun opporation sessions with endless possibilities. We will be coming out with cars and logos soon, so stay tuned.

If you have a model railroad, in your head or on layout, we need you to join us! simply send me a map of your railroad and a little about it and I will get back to you.



TOM MILLSAP

NEW MARK FOR WESTERN PACIFIC !!!
The stylized feather, designed by Marc Gobe and Associates of San Francisco, is part of the WP's new image after the railroad was sold by Western Pacific Industries to the present management. The new mark has already started showing up on 100 new boxcars built by FMC. It is uncertain whether or not it will be applied to their locomotives at this time.....

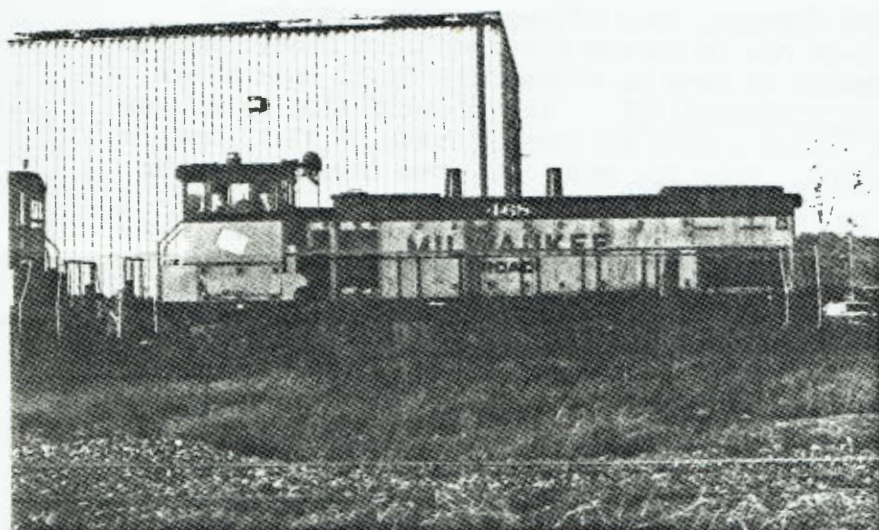
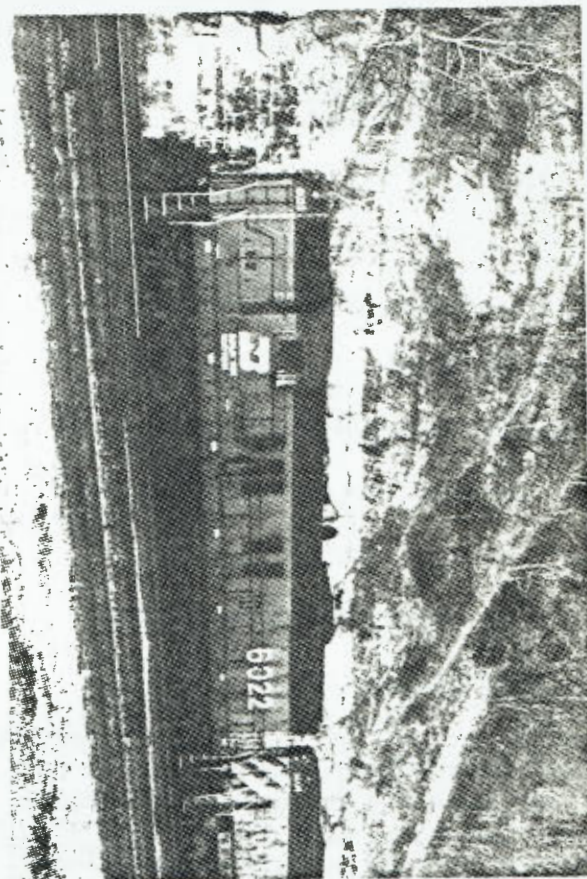


PHOTO Page



New Western Pacific caboose
paint scheme, fire engine
red with white numbers,
Gary R. Gardner

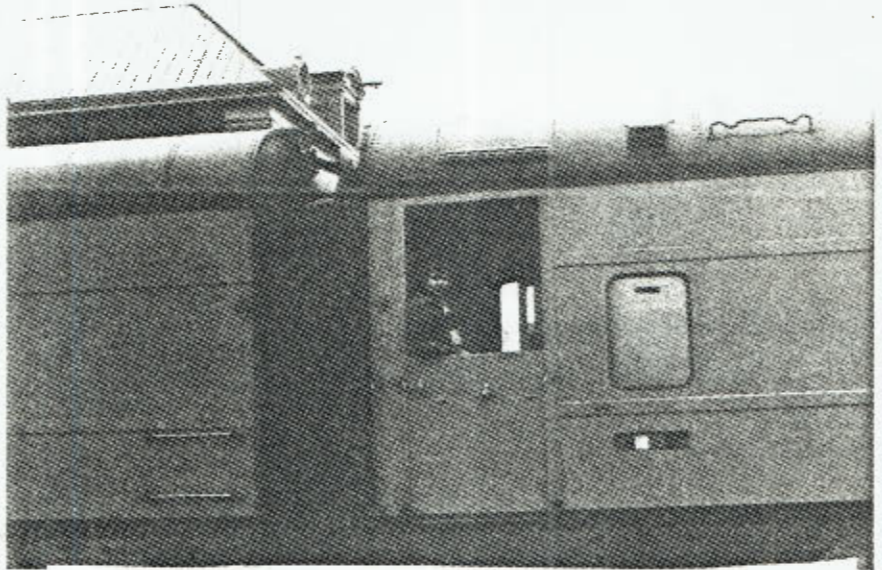
Milwaukee Road MP15AC in
StPaul MN Tom Gasior

Western Pacific GP9
Roger Arnold

BN SD9 in Dayton Bluff MN
Tom Gasior

NO. 3 .of A SERIES

Hello freinds, tis-I again, with my annual reminder of people who need to renew. People who don't know the value of the Daylight are the ones who don't renew, but you know better, don't you? You will renew, remeber big brother is watching you!!!



Sorry about the short issue this time, I didnt have time to do a long one, photo by Dave Harmer, editor aboard UP old timers special.

First on the list is our former editor and founder, John McGreevy, followed closely by LtJG Mark Morgan, our man in the navy. Mark Ala is up too along with Ted Bedell and our Chuck Junior's fry cook, Steve Panza. Rember to send me a check for \$3.50 soon so you don't miss the next issue. YOU VILL RENEW COMRADES!!!! Also I would like to welcome aboard two new members, Dave Miheuc, 51 Clarks Branch Rd, Myrtle Creek OR 97457, and Erik Barrett, 4801 Bell Rd, Auburn CA, 95603. Hope you enjoy us, even though we are a bit crazy.

CARY R. GARDNER
2365 CAMPUS DR.
SALT LAKE CITY UT 84121



first class postage



1980