

Well, here is the second copy of the FLORIDIAN, the rag of the SER. It has some pics and construction and prototype, a great way to start off. I would like to apologize for the lateness of this issue, however I had problems with the photographer. However, it was worth the wait as we have nice, sharp, large photographs.

I would like to ask you for your \$1.50 contribution so that I can expand the FLORIDIAN and maintain a high Quality(?) rag. Remember, this is the last free issue. Also, any contributions would be welcome, that is articles and photos.

I guess that's it. I hope you enjoy this. See you in two months.

Auto-Train

This is the first of our prototype articles. We couldn't start off with a better railroad, for Auto-Train is one of the most successful roads today, and it is a minor business miracle. A-T was conceived by Mr. R. Garfield, a man in his middle thirties who started off with nothing but an idea, begged, borrowed, scrounged, and talked his way into enough money to make his dream successful.

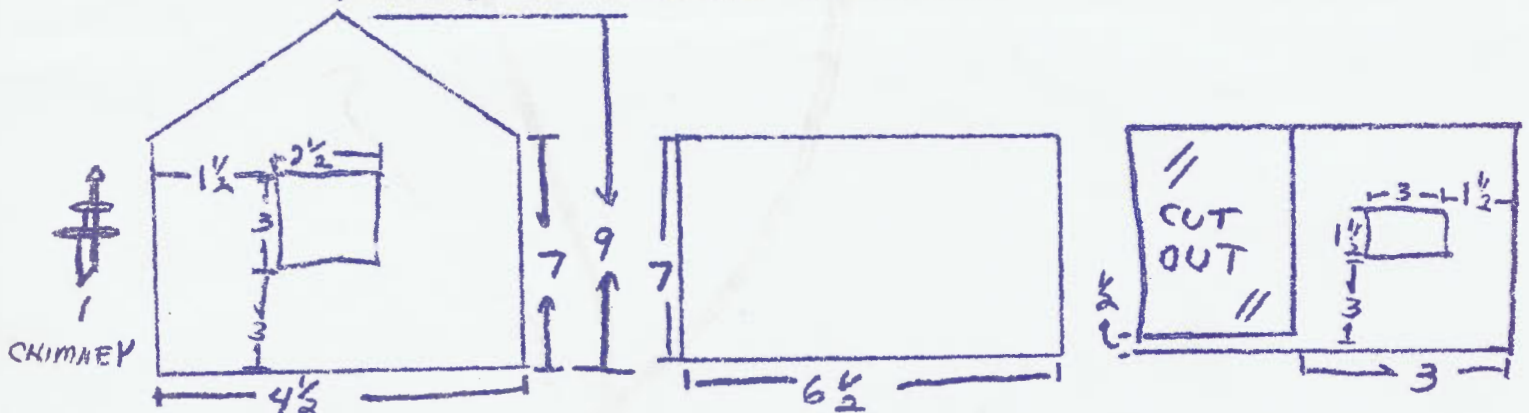
A-T runs mostly, if not totally, on SCL track from Sanford Florida to Lorton, Virginia, and from Sanford to Louisville, Kentucky. A-T bought cars from many roads but predominately from UP. In fact, you can still see yellow UP cars on the line. All cars are refurbished at Hoover Ind. in Miami, the same place that does Amtrack. A-T interior is the same red and purple as Amtracks. A-T exteriors are mostly white with red and purple trim and purple trucks and undercarriage.

Pictures: a. U-38 #4003 "Big Red" A-T first engine. Seen at Sanford, Fla. b. #422 Baldwin switcher c. Overall view of Sanford passenger terminal. Most domes are from UP. d. President Garfield's private car.

\$1.00 Model

Watchman's Shanty. Use board and batten siding.

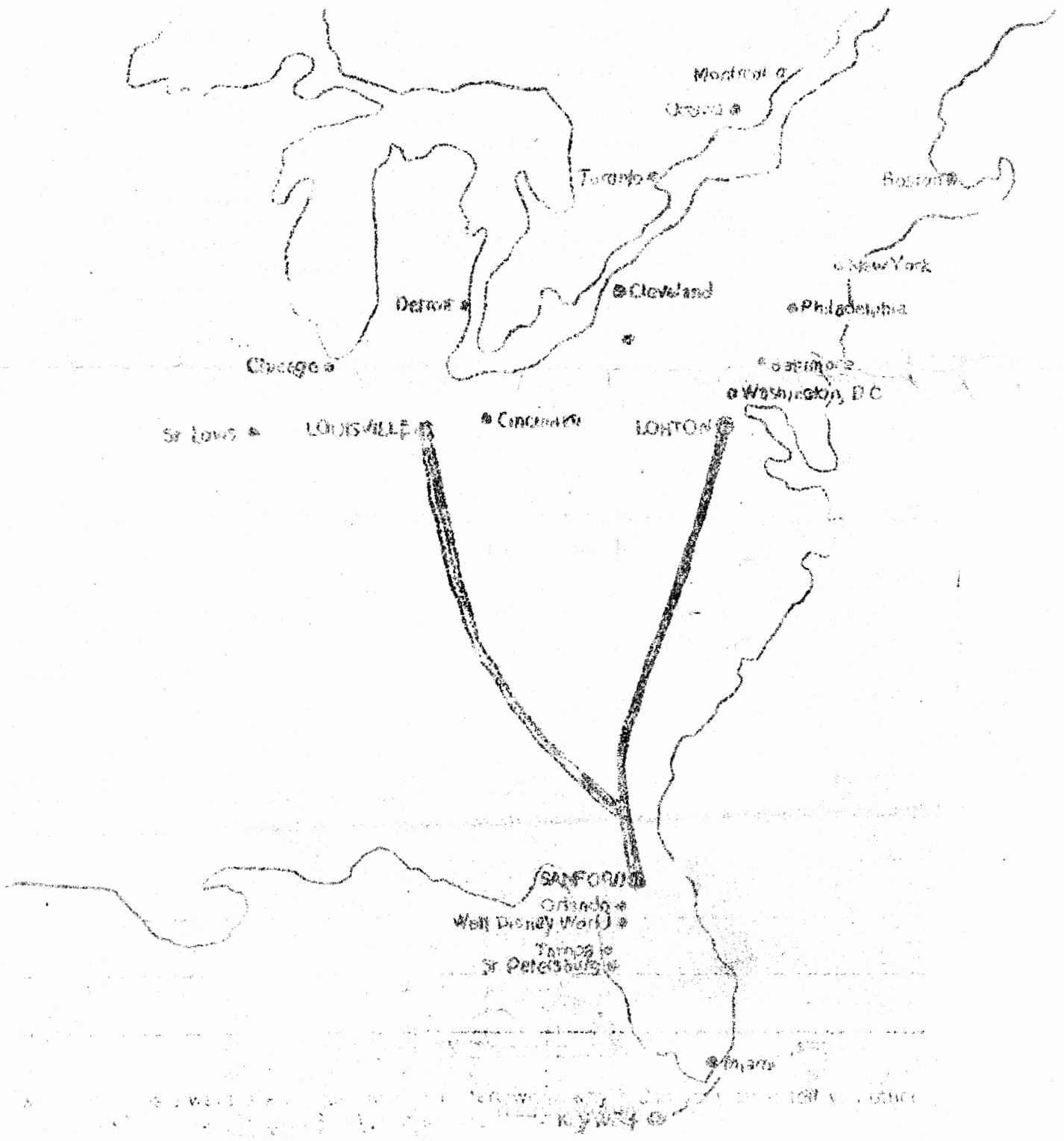
(Drawings not to scale. All measurements in feet.)

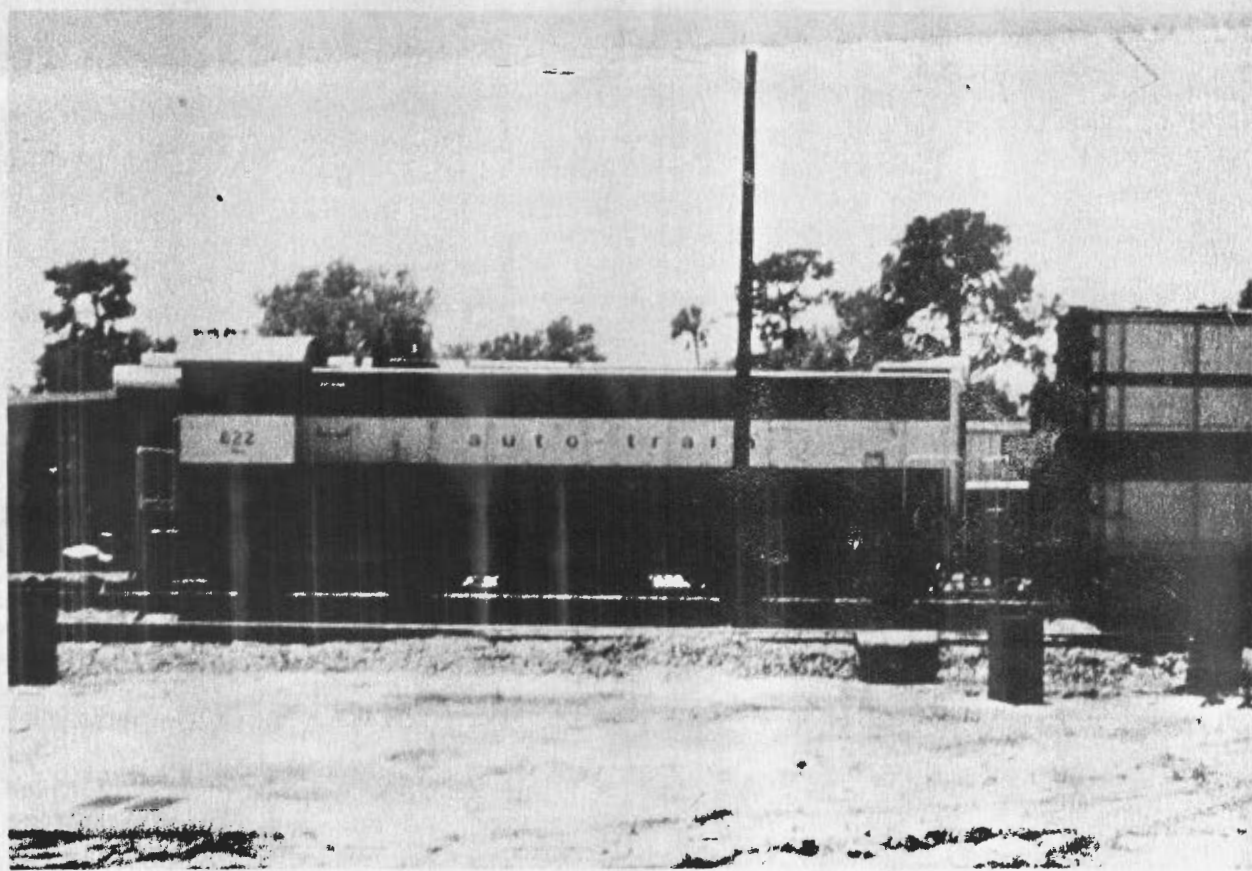
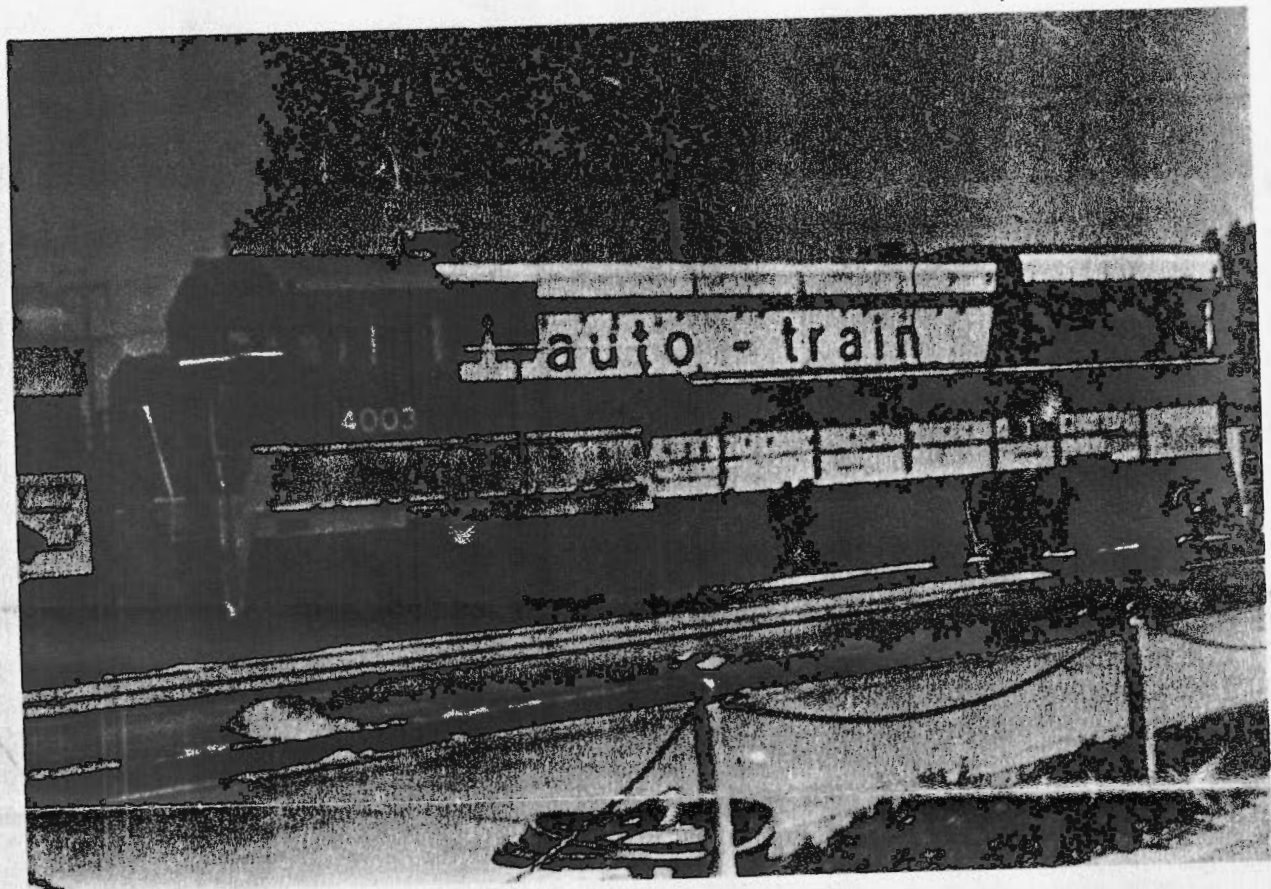


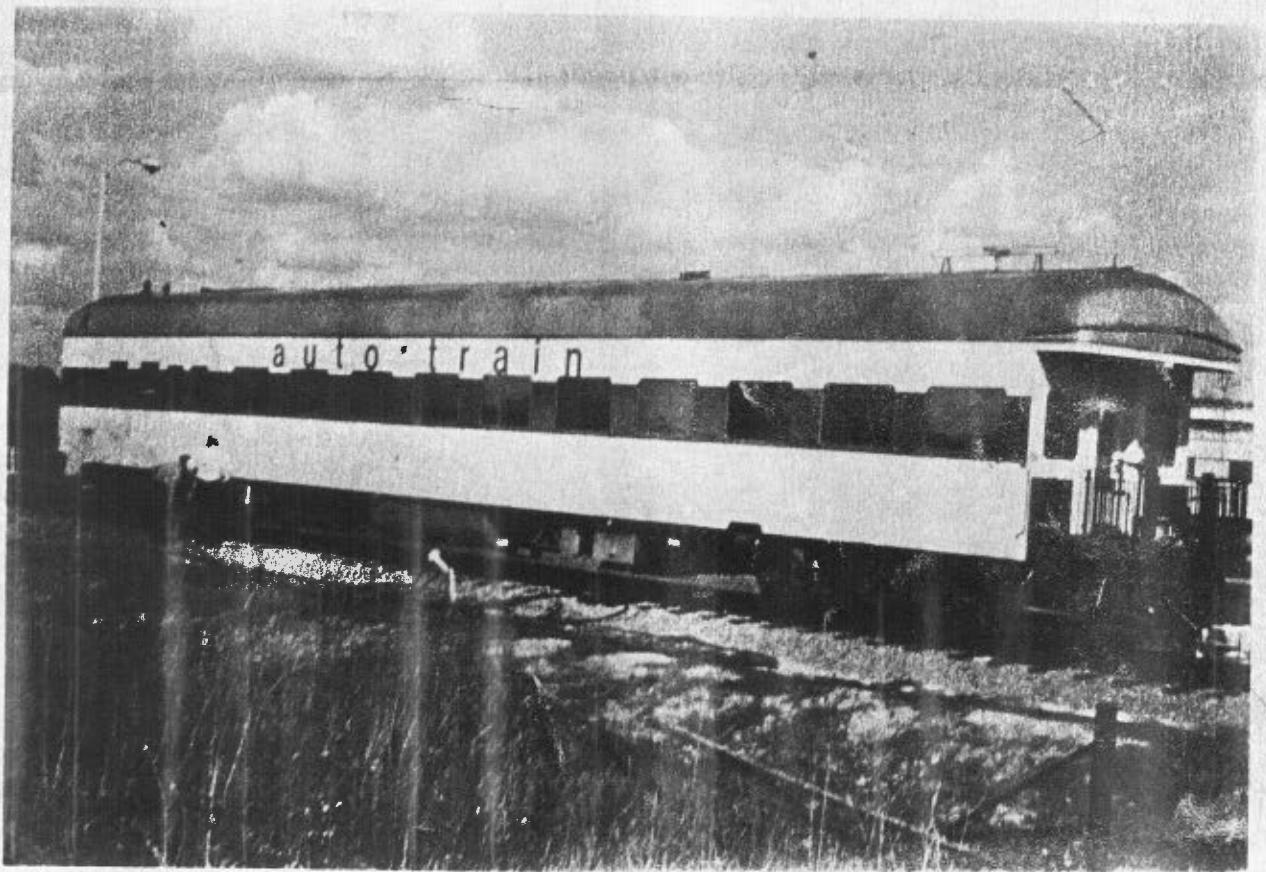
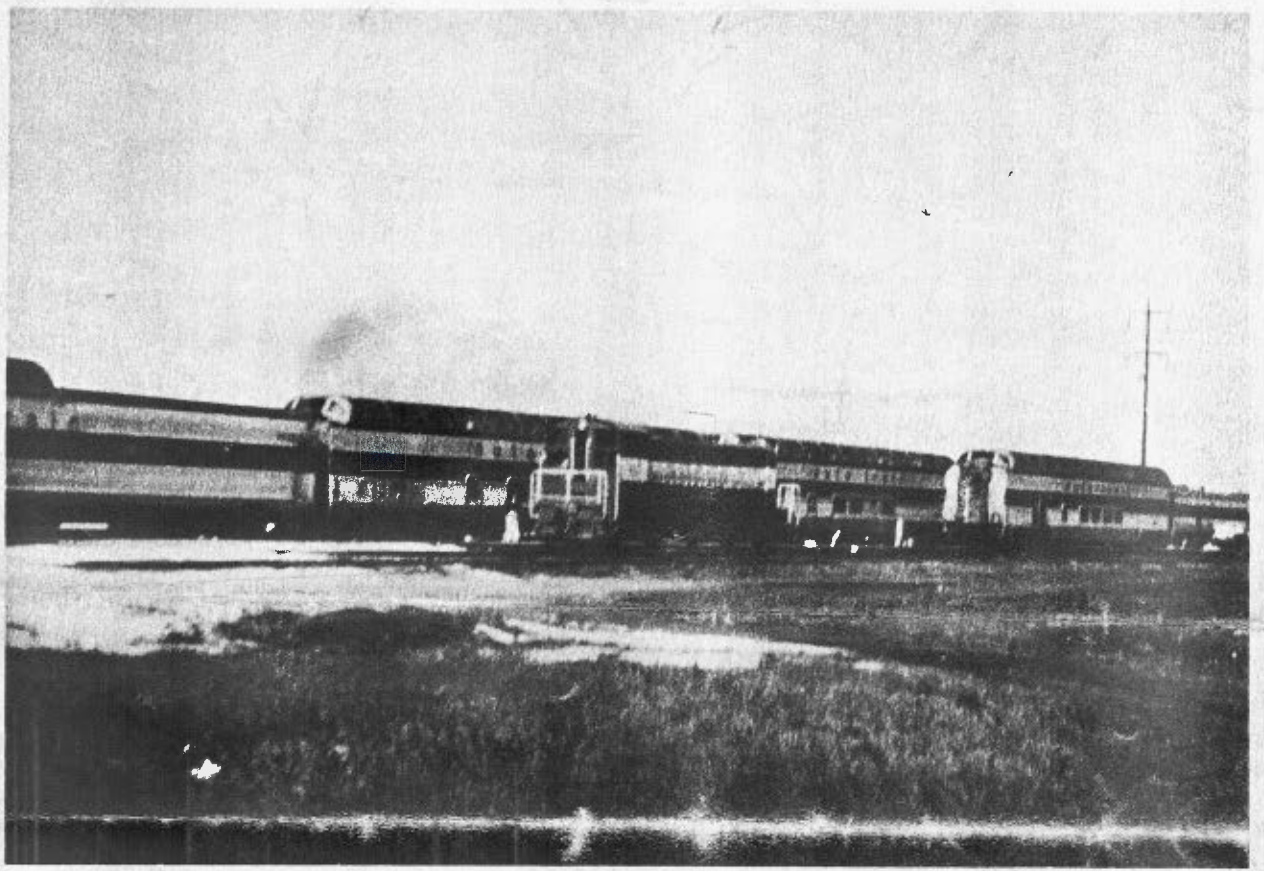
REMEMBER, THIS IS THE LAST FREE ISSUE!!!

Send \$1.50, any materials, articles pictures, inquiry sheets, etc. to Mark Solomon, 6 Bayberry Branch, Casselberry, Fla. 32707

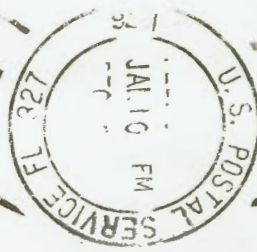
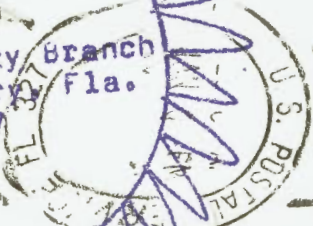
Do it fast!!!







SER
6 Bayberry Branch
Casselberry Fla.
32707



FIRST CLASS

S-O-U-T-H-E-A-S-T R-E-G-I-O-N S-O-U-T-H-E-A-S-T R-E-G-I-O-N