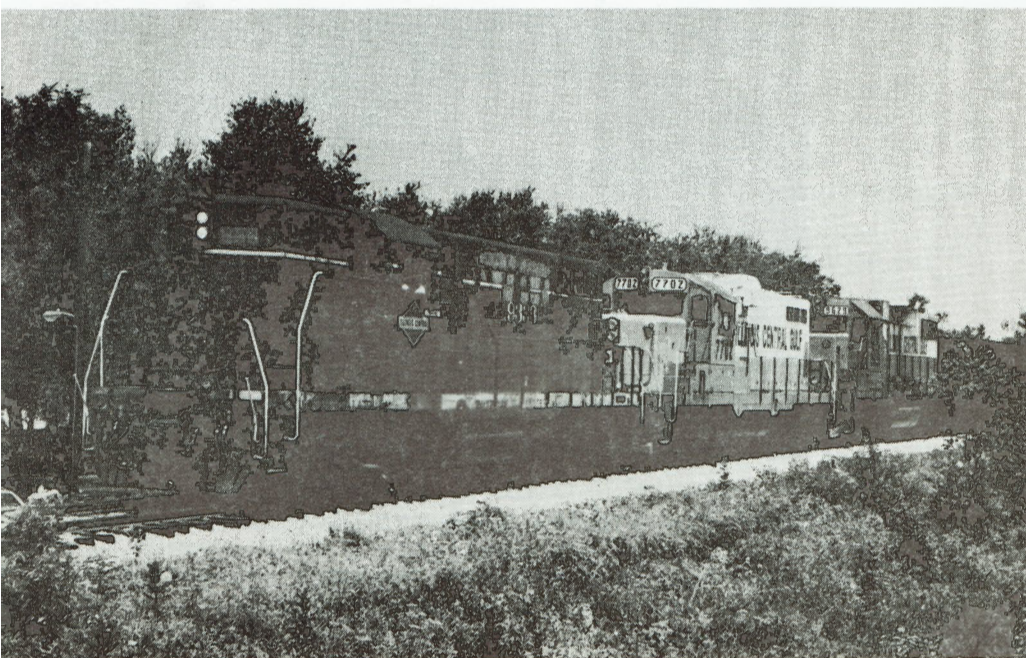
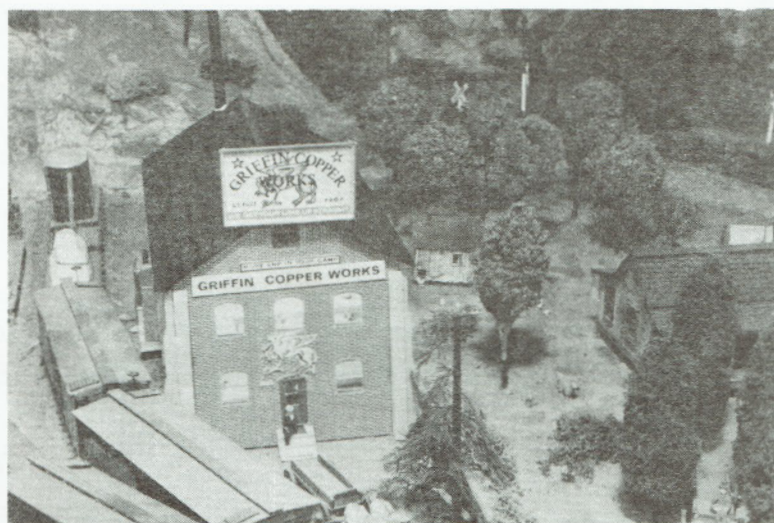
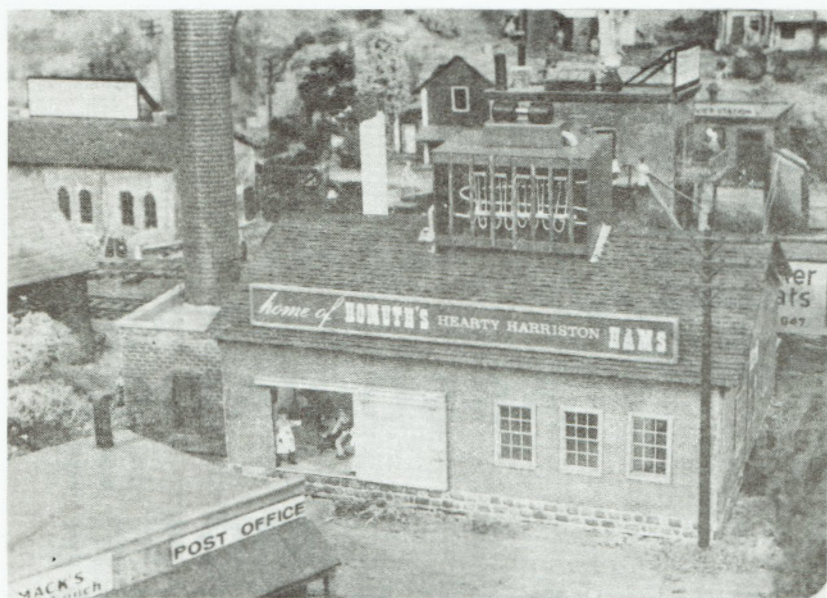




# TEEN ASSOCIATION OF MODEL RAILROADING

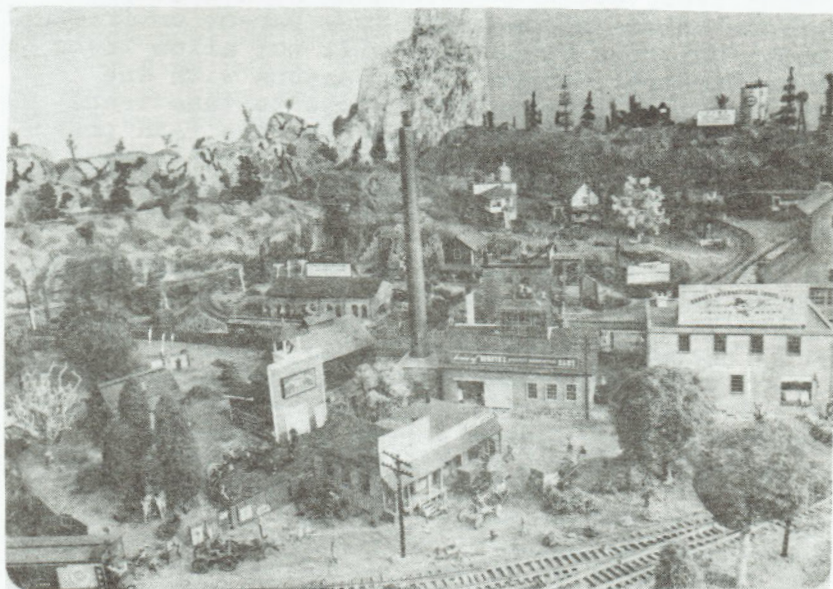




(Above & Right: These three views of Dick Knott's Troll & Elfin RR show how realistic a completed model railroad can look provided careful attention is paid to both the overall scene and its individual components.)



# THE TEEN ASSOCIATION OF MODEL RAILROADING



INTERESTED in finding out what other teens are doing in model railroading?

NEED help with a modeling technique or ideas for a new modeling project?

WANT to meet and correspond with modelers and railfans who share your interests?

TIRED of being shunned by narrow-minded adults and clubs who consider you "too young" to be a serious model railroader?

LOOKING for an association that really CARES about its members and WANTS to help them?

Then you should join the Teen Association of Model Railroading (TAMR).

The TAMR was founded in Oregon early in 1963 by two teenage modelers who felt that some kind of association was needed for the most neglected members of our hobby, namely the teenage modelers. Two years later, the TAMR was put on an official basis with elected officers and dues. Little did these "founding fathers" realize that the TAMR would grow to have hundreds of members.

Let's discuss some of the benefits of a TAMR membership:

## **Teens and Model Railroading Today**

The teenager is often overlooked in our hobby these days. Many feel "awkward" attending NMRA meets or conventions unless accompanied by a parent or friends. Most model railroad clubs also will not allow teens to become members. Couple these reasons with the fact that some adult modelers refuse to take teens seriously and you can readily see why the TAMR provides an important creative outlet for the teenage modeler. You too can find a place in the TAMR.

### **Helping New Modelers**

In the TAMR, we have a number of special programs to help those who are just starting in our hobby. These programs will help you quickly learn the techniques needed to become a better modeler or railfan. For most among these programs is our highly acclaimed Member Services Committee. This committee provides our members with an expert source for answers to questions on all facets of the model and prototype rail world. So if you're new and want to learn, or just stuck with a particular problem, the TAMR can help solve your problems.

### **For All Teen Modelers**

Both the beginner and veteran modeler can derive many benefits from the TAMR. Our publication, the TAMR HOTBOX, prints articles on all phases of our hobby. You will more than likely find a couple of ideas in each issue to enhance your modeling skills. Then, there is our DIRECTORY which can put you in touch with TAMR members who share your modeling interests in your area. Of still greater importance is that the TAMR provides you with the companionship and creativity of those your own age who understand your problems.

### **Our Publication: The TAMR HOTBOX**

The TAMR HOTBOX is the association's official publication and issued 12 times a year. All its articles are written by our members, both beginners and experts, on a variety of subject matters. Included are features on our members' railroads; articles on modeling techniques including scenery construction, benchwork and electrical wiring; columns devoted to new products, inexpensive improvements and railfanning techniques; reports on prototype railroads plus drawings, cartoons and photos. Many members feel that the TAMR HOTBOX alone is worth the price of a TAMR membership!



## TAMR Regions Increase Benefits

To increase your benefits on a more local basis, the TAMR has been divided into a number of regions. Many of them are active producing their own newsletters and holding meets, conventions and railfanning trips. Attending your region's meet or convention is a great way to meet TAMR members in your area and exchange ideas. Although region membership is not included in your TAMR membership, it is available at a slight extra charge.

## Still More Benefits

Moreover, our benefits don't stop there. In addition to receiving the TAMR HOTBOX each month, you'll also get a beautiful TAMR membership card and a copy of our latest DIRECTORY. Our DIRECTORY not only lists all our members and their interests, but also provides valuable information on the TAMR as well. If you want to get still further involved, you can run for office or serve on one of our committees. If you want to share your modeling expertise, you can get involved in our Member Services Committee or write an article for the TAMR HOTBOX. In short, you can become involved in the TAMR in many ways, if you are prone to do so.



(The TAMR HOTBOX covers all facets of model and prototype railroading. Each issue is crammed full of information designed to help you become a better modeler.

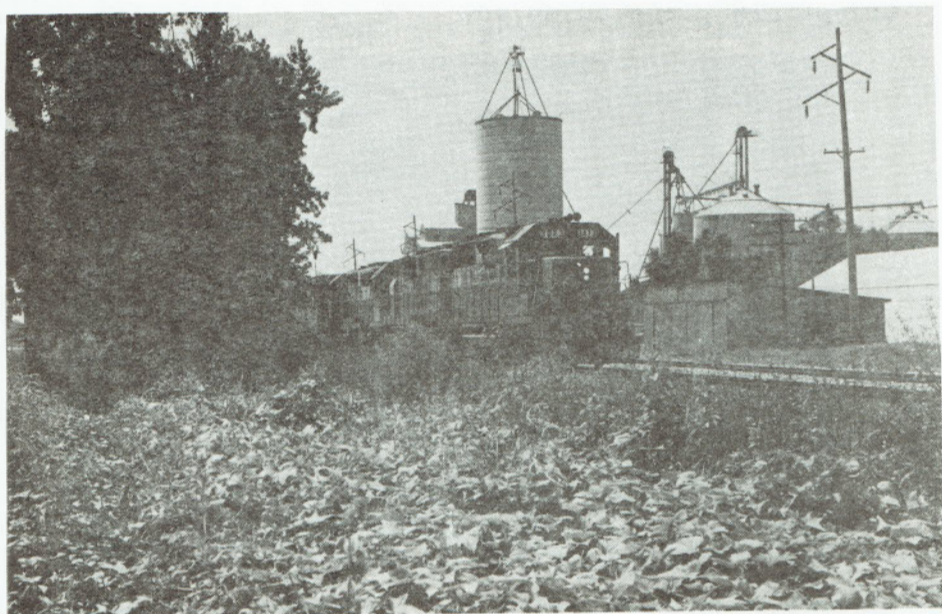
Photograph by Mark Kaszniak)

## Foreign Members Welcome

We also welcome members of foreign countries to join the TAMR. However, it might be necessary to assess a slight extra charge to cover the cost of mailing TAMR materials to you. Nevertheless, foreign members are entitled to the same publications and privileges as other TAMR members.

## Adults Also Accepted

In the TAMR, we realize that those past their teen years can also make valuable contributions to our association. Experienced adult modelers are needed to give expert advice to beginning modelers as well as to answer questions on modeling techniques. Thus if you're past your teen years and want to share your modeling knowledge, or just get a different perspective on your hobby, the TAMR welcomes you. A special Associate membership class has been adopted for your benefit. You can receive all the benefits of our regular members, except that you are prohibited from holding elective office in the TAMR.



(Illinois Central #3073 leads this general merchandise train through a small midwestern town at "leaf turning" time. Settings such as this evoke the drama of prototype railroading and help the modeler to construct realistic scenery for his model railroad.

Photograph by Tim Vermande)



## **Your Yearly Investment**

The cost of a Regular membership in the TAMR (available to those under 21 years of age) is \$10.00 per year. Associate memberships (available to those 21 years of age and older) are \$9.50 per year. After you join, you'll be entitled to receive 12 issues of the TAMR HOTBOX, a copy of our latest DIRECTORY plus a beautiful membership card.

## **HOW TO JOIN:**

Just fill out the enclosed application form and send it with your dues (payable in U.S. currency by check or money order) to our Secretary. His name and address is listed on the application. We also ask you to fill out the application as completely as possible because we use them when compiling our DIRECTORY. If you have any additional questions about the TAMR, please feel free to write me. Thank you, and we hope to have you as a member very soon.

**TAMR Auditor**

### **Front Cover:**

(Illinois Central #9333, a GP9, still in the old "Green Diamond" scheme; Illinois Central Gulf #7702, a GP8, that was rebuilt in the ICG's Paducah shops and ICG #9629, a GP38-2, second-generation diesel hurdle through Indianapolis, IN with a hotshot coal train in tow. Scenes such as this aid the modeler in painting, lettering and weathering his equipment properly. Photograph by Tim Vermande)

**make sure  
you're  
on the right track**



**JOIN TODAY!!!**

