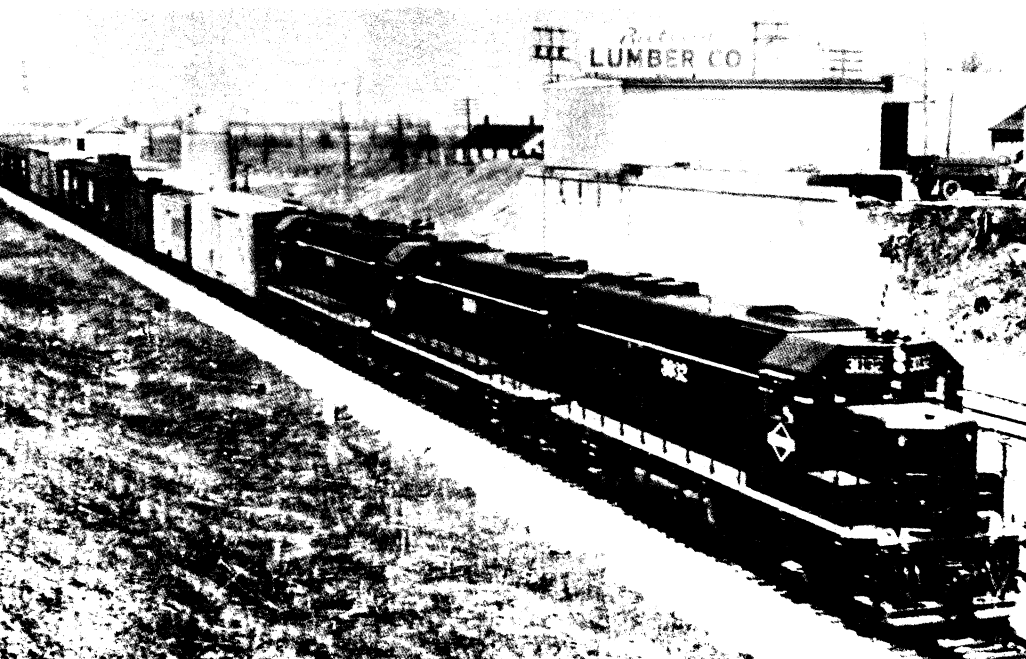
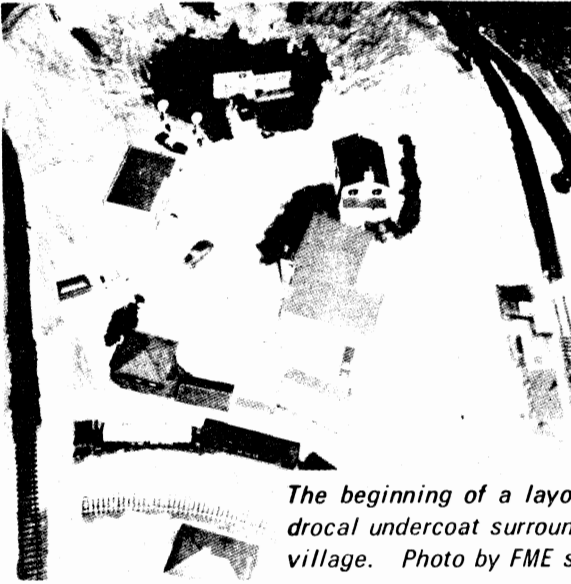


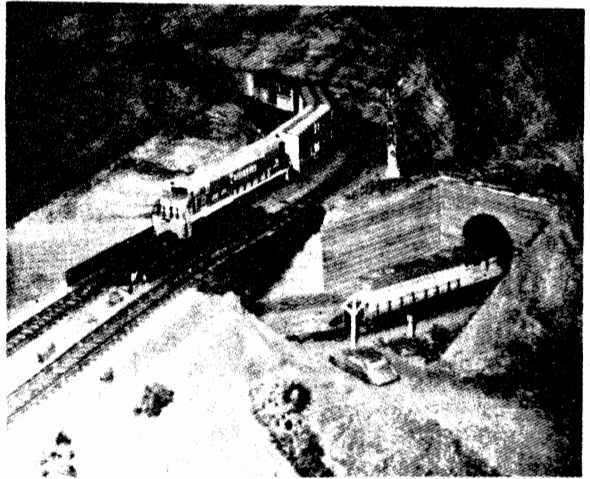


TEEN ASSOCIATION OF MODEL RAILROADING





The beginning of a layout showing how the Hydrocal undercoat surrounds a partially completed village. Photo by FME secretary Dick Wagie.



GP-35 and U-25C round curves simultaneously on Steve Seidel's CV & I Railroad.

(Cover) View of three Illinois Central GP-40's taken by Steven R. Seidel. Scenes such as this aid the model railroader in building his layout.

THE TEEN ASSOCIATION OF MODEL RAILROADING



A Krauss-Maffei and U-25C at work on Steve Seidel's Central Valley & Illinois Railroad – exhibiting Steve's creativeness and ingenuity gained and developed through TAMR membership.

Each month of the year, dozens of teenage model railroaders and railfans from the United States and foreign countries flock to join the TAMR. What does this teenage oriented association have that others don't? Let's look at the background of the TAMR and then give you a few specifics about this wonderful association.

The TAMR had its modest beginnings in Oregon early in 1963. At the time, two teenage model railroaders thought it would be a good idea to have some kind of teenage model railroad association. These "founding fathers" had little idea that the TAMR would grow to be an association with hundreds of members.

Two years after the founding, the TAMR was put on an official basis with elected officers and dues. The TAMR had at last come into its own. Now let's answer some questions commonly asked about the Teen Association of Model Railroading.

"WHY SHOULD I JOIN THE TAMR?"

In today's world of fast-paced model railroading, the teenager is almost always left out in the cold. Unless accompanied by a parent or friends, most teens feel awkward attending NMMRA conventio and other such meetings. Also, a majority of model railroad clubs will often not even consider allowing teenagers to join. Some adult model railroaders refuse to take teenagers seriously, mainly because they have not seen with great things we can do in the hobby. The TAMR provides the teenager with a voice. Yet more important, the TAMR provides companionship of others your own age who can understand your problems. You can find a comfortable place in the TAMR where your ideas will be respected by others.

"BUT I'M A BEGINNER - WHAT CAN TAMR DO FOR ME?"

Then you have all the more reason to join the TAMR. We have special programs for beginners where you can quickly learn the techniques needed to become a better model railroader or railfan. Our Member Services Committee provides our members with expert sources for answers to questions over the whole range of the rail world, both model and prototype. If you are a beginner when you join the TAMR, we will quickly help you find the information you need to become a better model railroader or railfan.

"HOW ABOUT ME? I'M AN ADVANCED MODEL RAILROADER."

The TAMR has a place for you too. Our publication, the TAMR HOTBOX, contains articles on all facets of our hobby and more than likely will give you a few additional ideas to further improve your modeling or railfanning techniques. Our annual Directory, issued each summer, can put you in touch with other TAMR members in your area who share your interests. Thus you can exchange ideas and contribute to your mutual knowledge.

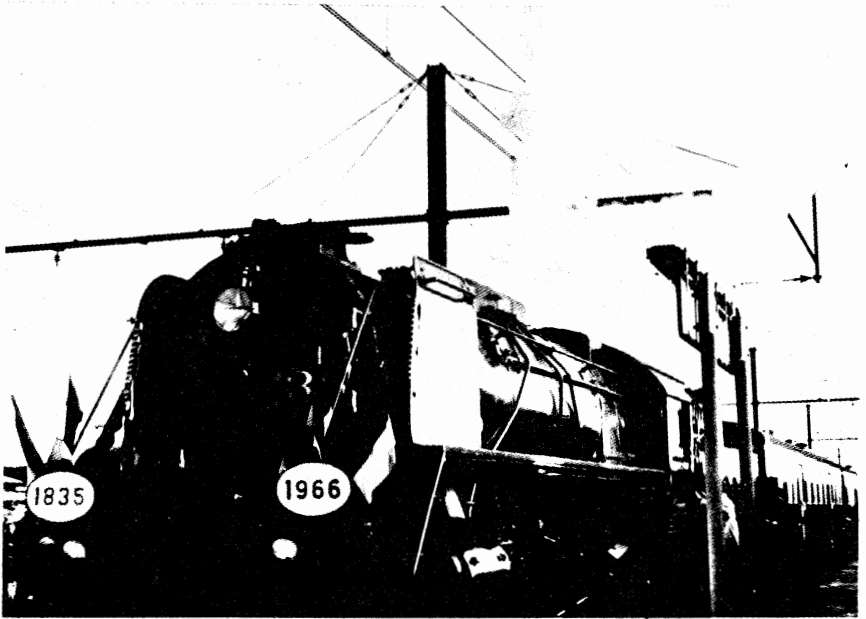
"TELL ME MORE ABOUT THE HOTBOX....WHAT'S IT LIKE?"

The TAMR HOTBOX is issued every other month and every member is entitled to receive six issues for his/her dues. The HOTBOX contains articles

written by our many members, both beginners and experts, on a variety of subject matters. There are articles on our member's model railroads; modeling techniques including conversions, kit-bashing and scratchbuilding; prototype railroad features and many other facets of the model and prototype rail world. The HOTBOX, which is commercially offset printed with photos in every issue, alone is worth the price of a TAMR membership!

"WHAT ELSE WILL I RECEIVE UPON JOINING?"

You'll get a beautiful TAMR membership card and a copy of our Directory which not only lists all TAMR members and their interests, but also has valuable information on the association as well. Yet best of all, you will receive the privilege of being a TAMR member and being able to work with other teenagers interested in your hobby.



This anniversary photo of the Belgian Railways engine No. 29.013 was taken by one of our overseas members, R. Delafontaine, and adds an international aspect to the TAMR.

"WHAT ABOUT MEMBERS IN FOREIGN COUNTRIES?"

That's no problem. These members simply pay a slight extra amount in dues to make up for the increased mailing costs. However, they are entitled to receive the same publications and privileges as other TAMR members.

"ARE THERE ANY REGIONAL ORGANIZATIONS IN THE TAMR?"

Yes! Any many of our regions are quite active producing their own newsletters and holding meets, conventions and railfanning trips...a great way to meet members in your area and exchange ideas. Although region membership is not included in your TAMR membership, it is available at a slight extra charge.

"HOW ABOUT RUNNING FOR OFFICE?"

It's easy. When election time rolls around, you will be informed in the TAMR HOTBOX. Then you can nominate yourself, or someone you think would



Photo courtesy of Steven R. Seidel, past-vice-president and past-secretary of the TAMR. Photographer: Paul Meyer.

do a good job for the offices up for election. In fact, you can run for regional office too.

"WHAT DOES THE TAMR COST?"

A regular membership in the TAMR (available to those under 21 years of age) costs \$5.00 per year. However, the TAMR realizes that those over the age of 21 can also make valuable contributions to our association, especially in the area of providing expert advice to beginners; therefore, we allow them to join on an associative basis for \$4.50 per year. Associate members are entitled to all privileges of regular members, except they can not hold elective office in the TAMR.

"OK, I'M CONVINCED. HOW DO I JOIN THE TAMR?"

Just fill out the enclosed application form and send to the TAMR Secretary whose name and address is listed on it--be sure to enclose applicable dues. Also, we request that you complete the whole form as we use them for compiling our annual Directory.

Thank you, and we hope to have you as a member very soon. If you have any additional questions, please feel free to write me.

TAMR AUDITOR

MARIE W. BROWN
4818 W. Chicago Street
Chicago, Illinois 60641

**make sure
you're
on the right track**



JOIN TODAY!!!