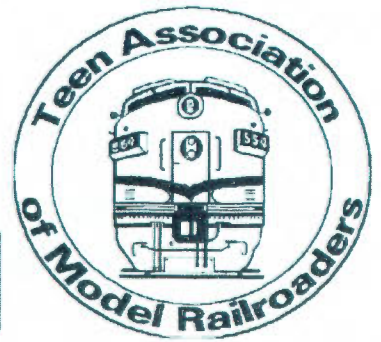


# The TAMR Hotbox

The NEW Generation of Railroaders

April 1998

Issue 323



1998 CONVENTION ISSUE



## STAFF

LAYOUT EDITOR David Hadley  
PUBLISHER Jeremy Conyer  
ADVERTISING Peter Maurath

The TAMR Hotbox is the official publication of the Teen Association of Model Railroaders, a non profit association created to promote, stimulate, foster and encourage young persons, the hobby of model railroading, and the activity of railfanning, and the preservation of the history, science, and technology thereof. The Hotbox is issued eleven issues per year, along with the Directory of members published by the TAMR Department of the Treasury.

## MEMBERSHIP

Membership in the TAMR includes a subscription to the association's magazine, The HOTBOX, The January mailing of the member Directory, quarterly regional newsletter, as well as an invitation to attend, and participate in all TAMR events. The following categories of membership are available:

Regular (21 & under) \$15.00  
Associate (over 21) \$20.00  
Overseas (Outside US) \$20.00  
Sustaining (Reg & Assoc) \$20.00+

### SEND MEMBERSHIPS TO

Brad Beaubien  
3331 Dearborn Blvd.  
Solix City, IA 51104

## ADVERTISING

For more information about advertising in the HOTBOX, please contact the Advertising Manager at:

HOT BOX ADVERTISING  
c/o Peter Maurath  
3119 West 100  
Cleveland, Ohio 44111

## SUBMISSIONS

News, features, drawings, and photo submissions are welcome and should be sent to the Indiana address. Photos shall only be prints. Prints should be in good contrast (more light than dark). Submissions will remain property of the TAMR, unless sent with a SASE.

THE TAMR HOTBOX  
c/o MIKE RILEY  
1040 E. MAPLE AVE.  
MIAMISBURG, OH 45342  
PHONE: (937) 86-7161  
EMAIL: TAMRedit@erinet.com

# The TAMR Hotbox \ NER

April 1998

Issue #323

## CONVENTION ISSUE

### Hot-Box Editorial

David Hadley

Page 3

### Convention Director's Statement

Ole Bye

Page 4

### General Information

Page 5

### Convention Schedule

Page 7

### Tour Information

Page 9

### Vermont Photo Gallery

Photos Courtesy: Ole Bye

Page 11

### Convention Registration

Page 13

### Hotel/Housing Information

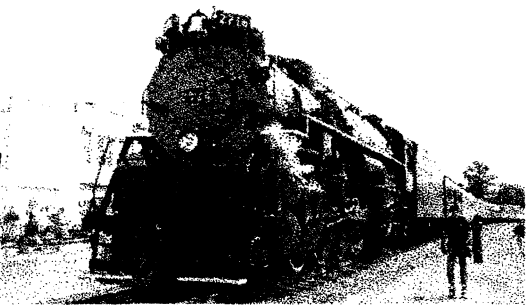
Page 15

## Next Issue.....

Layout On A Shoestring  
Budget  
The Buzz-Box  
Meet Your New Editor  
and Much More!

# **EDITORIAL**

## **DAVID HADLEY**



Well folks, you might have noticed that this issue covers convention material. Along with that you probably noticed the color cover on this month's *Hot-Box*! Brad Beaubien, and I worked until 4:00 in the morning on this cover. We think that is the TAMR's first color cover. The photograph was taken of a Green Mountain RR 1851 with several units teaming up to pull a long freight through Rockingham, VT. Our Convention Director, Ole Bye, took the this impressive picture.

In closing I would like to thank all of the great people in the TAMR who help the "rescued" Hot-Box. This newsletter depends on its readers for the material. I hope you all will send material to the new editor, Mike Riley. This is a great organization, so make the most of it while you are all still young!

Sincerely,

*David Hadley*

## **\*NEW HOT-BOX EDITOR**

**Mike Riley**

**1040 East Maple Road**

**Miamisburg, OH 45342**

***TAMRedit@erinet.com***

**(937) 866-7161**

**\*Editor Term Begins on Issue Number 324**

## Think Green.

It's that time of year again - the snow melts in the northern climes, it rains for twelve days in a row, and the mud and clouds have taken over everyone's consciousness. The purpose of this time of year, according to Garrison Keilor, is to give to those people who don't drink an idea of what a hangover is like.

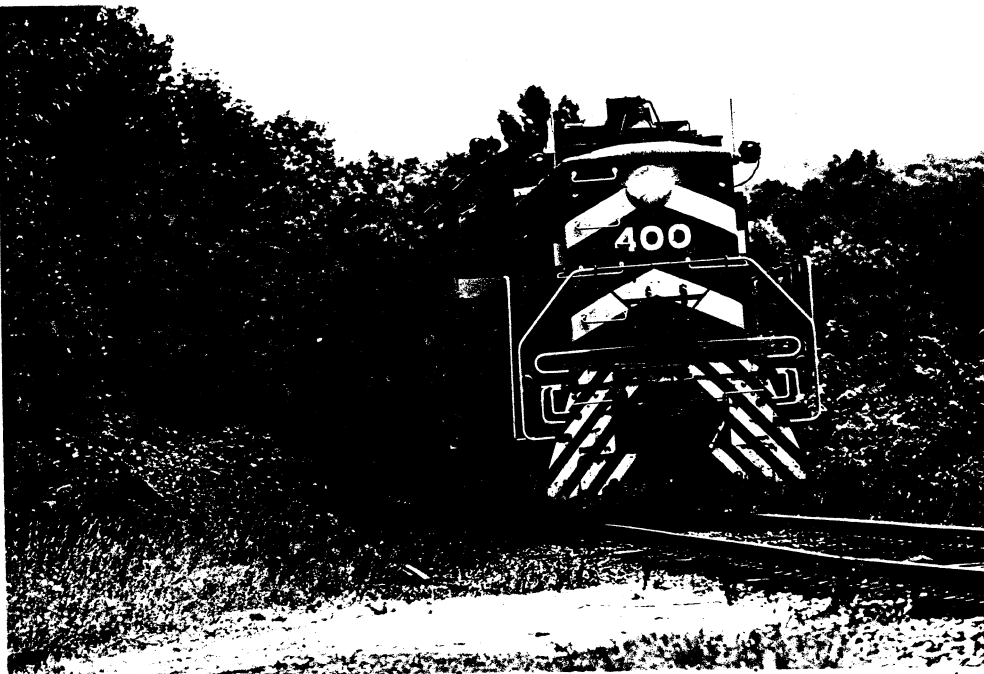
But don't feel depressed. It's also another important time - time to think about attending the 1998 TAMR National Convention, the *Green Mountain Flyer*, in Springfield, VT! Yessiree, four fun-filled days of honest New England railroading await conventioners! You won't have to worry about the weather in July. Sunny. Green. Mountainous. Vermont.

As convention director, I cordially invite you to come to the GMF 98. I think you'll enjoy touring the state's finest layouts, railfanning a variety of unique railroads, and taking in the clinics and presentations we have scheduled. This convention promises to be a great experience.

So come one, come all - to the *Green Mountain Flyer 1998!*

**-Ole Bye, Convention Director**  
RR2 Box 425, Chester, VT 05143  
(802) 875-4594  
bye@vermontel.com

"GREEN MOUNTAIN FLYER" BEHIND



GMRC 400, BARTONSVILLE, VT

# **General Information**

## **Convention Site**

Holiday Inn Express, Springfield, VT, exit 7 off I-91.

## **Maps**

Maps showing the locations of convention activities will be included in your registration package.

## **Non-Railroad Activities**

Parents, drivers, and families attending the convention who would like more information on area attractions: please check the appropriate box on the registration form.

## **Schedule**

The convention schedule will be published in the *Hotbox*. It will also be included in your registration package. As always, the schedule is subject to change between the time of publication and the convention.

## **Contests**

The TAMR model and photography contests will be open to all convention attendees. The contests will be judged by the convention body using secret ballot. And, yes, there really will be contests this time!

## **Clinics**

Clinics will be given on a variety of railroad related topics. We encourage members to give a clinic of their own. If they are so inclined would they please contact the convention director. So far, for clinics we have: The C&O-Then and Now, Modeling Accident Scenes, Modeling Bathtub Gons, and Poultry Enclosure Hard-shell Scenery.

## **Layout Tours**

This year, an entire day will be devoted to layout tours. We will "caravan" the entire state, visiting some of Vermont's finest model railroads. Don't worry, Vermont isn't that big.

## **Excursions**

The convention excursion will be the Green Mountain Railroad's *Green Mountain Flyer*, a 26 mile round trip through rural Vermont.

On the post-convention trip to North Conway, New Hampshire, attendees will have the opportunity to ride the Conway Scenic Railroad.

### **Shop Tour**

We will tour the Green Mountain Railroad's North Walpole, NH, roundhouse and shops on Sunday. It will be of no extra cost to conventioners.

### **Board of Directors Meeting**

The BOD meeting will be held on Saturday night at the convention site. Although voting is limited to officers of the TAMR, anyone may attend the meeting. Quorum., please, quorum!

### **Post Convention Activities**

This year's post-convention trip will take us into the spectacular White Mountains of New Hampshire, to the Conway Scenic RR and the Mount Washington Cog Rwy. These are two operations you don't want to miss.

### **Transportation**

The TAMR will offer transportation for convention attendees from Bellows Falls, VT, Amtrak station. If you're flying into a major airport, please contact convention director. The closest international airport is Bradley in Windsor, CT.

### **Reminders**

There are many reasons to come to New England in July, but please remember that Fall Foliage only occurs in the fall. Bring your favorite train jokes and stories, and your own accordion, if you have one.

### **Contacts**

Convention Director: (802) 875-4594 or 4595

Holiday Inn Express: (802) 885-4516



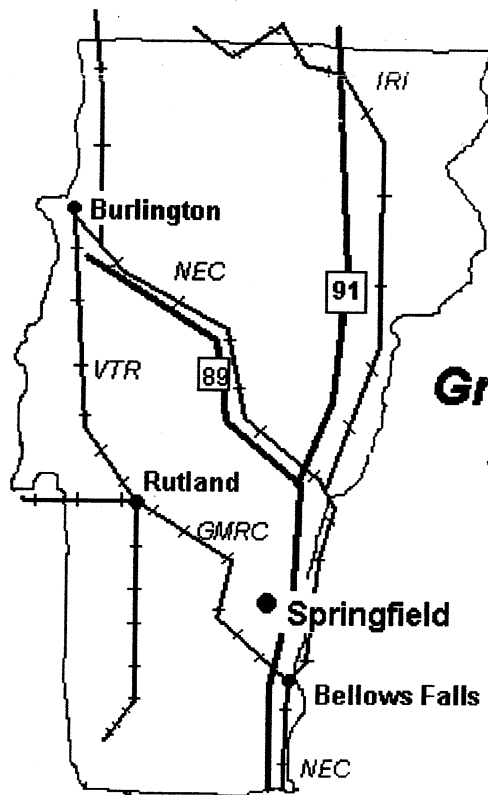
PHOTO BY DOUG ENGLER

CONWAY SCENIC RR, BARTLETT, NH

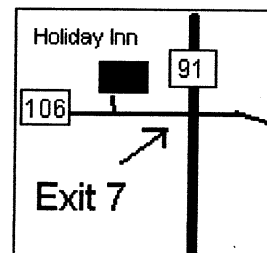
# Schedule

	<u>Thursday, July 2</u>
<b>7:30 AM</b>	Meet at Bellows Falls, VT, depot
<b>8:00-9:00</b>	New England Central 323 North comes thru, pursue
<b>Mid-day</b>	Stop in White River Jet. for lunch & see sights
<b>Afternoon PM</b>	Try to catch up w/GMRC or VTR train somewhere
<b>Evening PM</b>	Clinics, pizza, etc. Contest Registration
	<u>Friday, July 3</u>
<b>5:30 AM</b>	Meet at Convention Center
<b>6:00</b>	Set off on tour of state's finest model railroads
	Jim Ferguson - Great Northern (HO)
	Glen Glasstetter - Chesapeake & Ohio (HO)
	Northwest Vermont Model Railroad Society (HO)
	More!
<b>Nighttime PM</b>	Arrive back at convention center: videos, slide shows.
	Registration of contest models and photos
	<u>Saturday, July 4</u> (Independence from Great Britian Day)
<b>8:00 AM</b>	Meet convention center
<b>8:00</b>	Clinic 1 - Dave Hadley: The C&O, Then and Now
<b>9:00</b>	Clinic 2 - Dave Hadley: Modeling Bathtub Gons
<b>10:00</b>	Clinic 3
<b>11:00</b>	Clinic 4 - Matt Sharp: Weathering
<b>Noon-ish</b>	Lunch time!
<b>1:00 PM</b>	Caboose Corner Hobby Shop
<b>1:30</b>	Layout Tour - John Cook: Rutland RR (HO)
<b>Afternoon</b>	Layout Tour - Ole Bye: Deepwater Western (HOn3)
<b>@ Dark</b>	Fireworks! Fiesta!
<b>7:00</b>	Annual Banquet at Convention Center (?)

	<b><u>Sunday, July 5</u></b>
<b>8:00 AM</b>	Meet at Convention Center
<b>9:30</b>	Depart for Bellows Falls, VT + Green Mtn RR
<b>11:00</b>	Our train leaves the station
<b>1:00 PM</b>	Train returns to Bellows Falls
<b>1:00</b>	Tour - North Walpole Shops & Fitchburgh Yard (GMRC)
<b>Afternoon</b>	Finish up any clinics or postponed activities.



### ***Green Mtn. Flyer '98 Map***





## **More Information**

### **Green Mountain Railroad and Vermont Rail System**

The 50-mile GMRC cuts northwest across bucolic Vermont, one of only two lines to bisect the state. Much of the GMRC's earnings come from bridge traffic, but in the last few years there has been an effort to reinstate on-line industries.

Along the lower 13 miles of track, from Bellows Falls, to Chester, VT, the GMRC operates its tourist train, *The Green Mountain Flyer*. Venerable Alco RS-1 #405 takes care of this duty, still growling down the same tracks after forty years.

Before the merger with Vermont Railway, GMRC hauled its trains with 4 GP-9s. One of these has been sold and one transferred to another part of the system.

The merger has brought good things, however. Track has been upgraded in some places to 40 mph. Business is on the up-swing. Better days even are probably ahead.

Vermont Rail Systems has reunited the routes of the famous Rutland Railroad, which consist of a north-south line on the western side of the state, and the east-west GMRC.

### **Conway Scenic Railroad**

Witness some of the most spectacular scenery in the East - New Hampshire's White Mountains - as you ride through the Mt. Washington valley aboard one of CSR's restored 1950's-vintage trains. 1 1/2 hr. trips are hauled by the line's 0-6-0 steamer, and the longer 5 1/2 hour Crawford Notch trip is pulled by beautiful F7s(?). This railroad is great to railfan as well as ride.

### **New England Central**

NEC is the closest thing to gutsy mainline action we have in Vermont. Braces of blue and yellow GP38s drag 75 car freights at speeds up to 50 mph. Two NEC freights operate each day, one north, one south, and Guilford Transportation operates a freight each way as well. Amtrak's *Vermont* also travels the route both ways in daylight. NEC is difficult but fun to railfan.

### **Layouts: Jim Ferguson**

Jim models the Great Northern in HO scale, and the layout, called the West Hill Division, fills the entire garage attic. The mainline is over 200 feet long, snaking through well-modeled scenery of Washington and Oregon. A photo taken on Jim's layout appeared in Trackside Photos in the April, 1993 issue of Model Railroader Magazine.

### **Layouts: Glen Glasstetter**

This fine layout depicts the Chesapeake & Ohio in 1952 in West Virginia. The layout is 22 x 36, with a 172 foot mainline. The mainline and a branch line run among six-foot mountains, which rise to the ceiling. This layout is very, very fine work.

### **Layouts: John Cook**

John's layout completely fills a 12x60 foot trailer, and represents Vermont's very own Rutland Railroad in the 1950s. John has built many structures exactly like the prototypes and the layout is operated like the real Rutland was.

### Mount Washington Cog Rwy.

This may be the shortest railroad we visit, but certainly it is the most difficult to operate. Grades are as steep as 37%. Trains are 1 car long. The little 0-2-2-0s storm up the mountain many times a day, and it is an awesome sight to behold them lifting themselves up the side of the highest mountain east of the Mississippi and north of North Carolina. We will probably not be riding this railroad, because it takes so long, and because it's expensive.

### Layouts: Northwestern Vermont Model Railroad Society

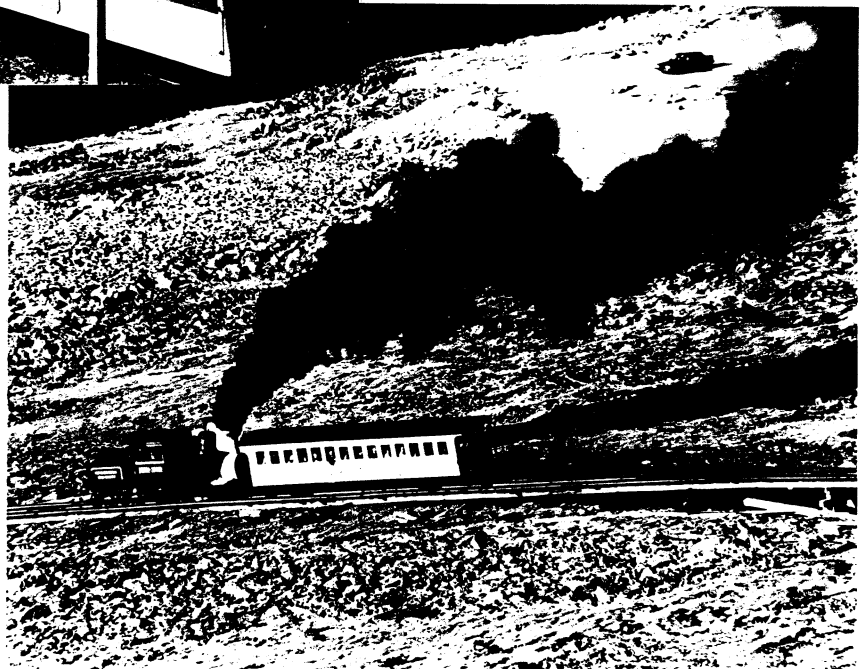
Located in Essex Junction, VT, this large HO layout features a 250 foot mainline, two helixes, and a couple long peninsulas. Operation is with conventional cab control or Onboard command control. The layout represents Northeastern railroading.

PHOTOS BY OLE BYE



MT. WASH. COG Rwy. "AMMONDOSC"  
FAYBYAN, NH

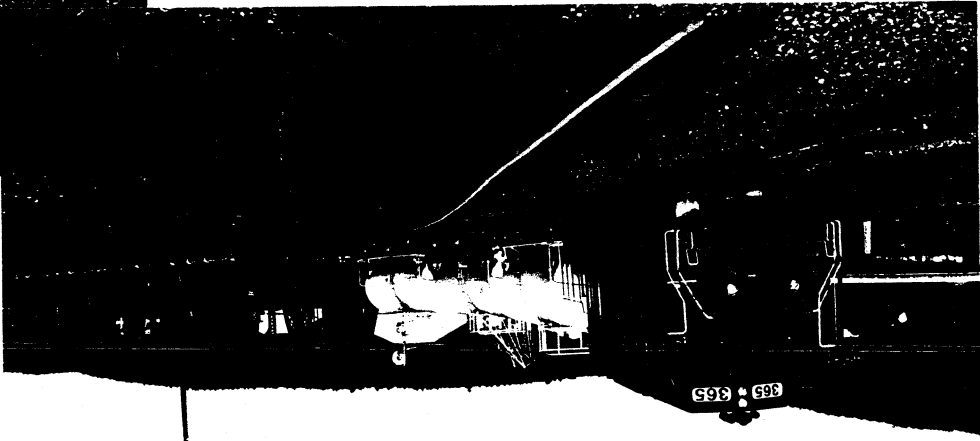
"TIP TOP" CLIMBING MT. WASH.



# Gallery



GMRC 1850, BARTONSVILLE, VT



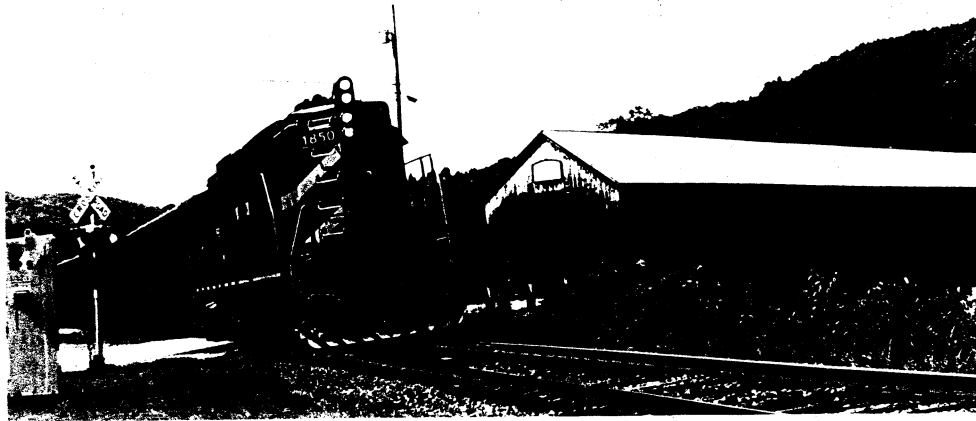
BOSTON MINE 365, BELLOWS FALLS, VT



D+H 7304 + VTR 202, LUDLOW, VT

**GMF '98**

**GMF '98**



GMRC 1850, BARTONSVILLE, VT

AMTRAK "VERMONT", BELLOWS FALLS, VT



GMRC 1850, 1849, 1851 CHESTER, VT

**Green Mountain Flyer '98**  
**REGISTRATION FORM**

---

**GMF '98**

**Convention Registration**

☐ \$15.00 (Includes all convention site activities)

**Excursions**

☐ Green Mountain Flyer, \$11.00

☐ Conway Scenic RR, Bartlett train (post-convention), \$14.50

**Non-Rail**

☐ Please send me more info about area attractions

---

**Total**

\$ \_\_\_\_\_

Please include check or money order payable to:  
**Ole Bye, Convention Director**

**Name** \_\_\_\_\_

**Address** \_\_\_\_\_

**City** \_\_\_\_\_ **State** \_\_\_\_\_ **Zip** \_\_\_\_\_

**Phone** \_\_\_\_\_

Please mail this form to **Green Mountain Flyer '98, c/o Ole Bye, RR2 Box 425, Chester, VT, 05143**

*REGISTRATION FORMS MUST BE RECEIVED BY JUNE 15TH TO ENSURE SEATING ON EXCURSIONS.*



**PAGE LEFT BLANK**

# Housing and Hotel Info

The TAMR has worked out a deal with the Springfield, VT, Holiday Inn Express, whereby a room with double beds costs \$75 per night. If ten rooms are rented by TAMR conventioners, we get free use of the conference room. When you call to make reservations at Holiday Inn, be sure to let them know you're with the TAMR. Please do not send hotel money to the TAMR.

For members on a traveling budget, there may be room at the convention director's home on a first-come-first-serve basis. Please work this out ahead of time.

## Springfield, VT

### **Holiday Inn Express**

2B - \$75 (802) 885-4516 Reservations: (800) HOLIDAY

### **Abby-Lynn Motel**

(802) 886-2223

### **Hartness House (rather classy)**

(802) 885-2115

## Rockingham

### **Rockingham Motor Inn**

(802) 463-4536

## **J & J BASIC HO LAYOUTS LLC**

"CUSTOM SELECTED HO TRAINS"

P.O. Box #923  
(616) 676-5983



Ada, MI 49301-0923  
Fax - (616) 676-1367

JOHN PAUL VAGO  
Future Owner

JOSEPH NICHOLAS VAGO  
Future Owner

## **SALES / SHOWROOM**

### Hours & Location

6670 Conservation, N.E. (First North of Pettis)  
8 AM to 8 PM Mon thru & Inc. Sat.

Product Dealers of & for over 200 manufacturers  
with items made in 20 Countries.



DAVID PAUL VAGO  
C.E.O. - GEN. MGR.  
Registered Agent



"15% OFF FOR TAMR MEMBERS"

# **GMF '98**



