



THE HOTBOX

The Official Publication of the Teen Association of Model Railroaders

ISBN: 1093-622X

Issue 446 March/April 2012



Cover photo: After switching out a west side lumberyard, Canadian National GP-40-2W is shown here backing along Elgin Street on old Green Bay & Western trackage on January 28, 2012. Photograph by the Editor.

Editor: Daniel Fiala **Columnists:** Charles Warczinsky and Josh Cohn

Contributions: Any material that you wish to contribute is welcomed. If you have a million reasons Alco is better than EMD (and it is!), start a monthly column. Photos and drawings just waiting to be shown to the world are very welcome here as well!

I can accept material submitted on DVD, CD, USB drive, Memory Stick, xD, Smart Media, Compact Flash, SD/MMC or paper copy. I can no longer accept floppy disks. To see your work published, send all material to: Daniel Fiala

Questions? Ring up the Editor at

Form 19 - From the Editor's Desk

As any Model Railroader knows, we all have to start somewhere. That means when you start building your first models, they usually fall short of what someone who has been in the hobby a long time may accomplish. However, you can learn fast, as there are many members in the TAMR who can assist you.

The TAMR isn't just for teens, though this is by far the age group of our members. We have had members as young as age eight in the group. Many adults are part of the group to help support the next generation of Model Railroaders. - An excerpt from the TAMR Brochure.

Happy Railroading,
The Editor



Hotbox News



Our previous President, Radisson McGuire, stepped down recently. By our Constitution, that automatically makes our Vice President, Josh Cohn, of West Hartford, Connecticut, President.

ATTENTION! All members! If you are going to move or have a change of address, please contact the Editor by postal mail or telephone. I cannot send these newsletters to addresses that are not active. If you don't update your information in my file, I cannot insure prompt reception of the TAMR's publications. Thank you for your cooperation. On request of President Cohn, there is a grace period for renewals until the 1st of April, 2012.

ATTENTION! ALL MEMBERS! The TAMR is having three contests beginning this April 1st: A photo contest, Article contest and a Member Recruitment drive.

A Note on the Membership Directory: there is a new column, "Month Joined" which will tell each member when it is time to renew. For example, if you joined in January, 2012 your membership will run to January, 2013.

A Message from the President: The TAMR engine has been cooling down over the last couple of years. The TAMR train had been chugging along great until its stop. The engine has slowly been cooling down in the yard and that must not happen. As President I am here to put that coal into the furnace of the TAMR engine, to get that engine back on the track and chugging along for a while to come. The TAMR is a great group for teens who don't have a group to belong to because they are not the right age, or believe that the other groups are not the one for them. I encourage you to invite your friends to join so that the TAMR train will be once again over 100 cars long. With your help, we can do it.

Josh Cohn, President, TAMR

Attention Robert Lipiner, Payton Register and Carlton Wilson: On behalf of all TAMR members and myself, welcome to the Teen Association of Model Railroaders!

The Railroad Pun of the month.

Back in the day, the tramps' name for the Missouri Pacific was the Mop. That concludes this month's pun. Tune in next time for more laughs!



FOR SALE 1997 Dodge Grand Caravan, pw, pm, pl, cruise, a/c, stereo cassette, cloth interior, V6, low miles! Slight fire damage, needs some work. \$3000. obo. 216-586-5371

- From the Peter Maurath File

The Teen Association of Model Railroaders - Established 1964

The TAMR crew is as follows: President - Josh Cohn; Vice President - Open; Treasurer - Will Ebbert; Editor & Central Region Rep. - Daniel Fiala; Pivot Pin - Tim Vermande; Northeastern Region Rep. - Jamie St. Onge; Southern Region Rep. - Sawyer Berry; Western Region Rep. - Ben Hawken; Promotional Director - Open.

Dear TAMR Members,

Here is my big announcement. We are having a contest. Not just one contest, no that wouldn't be fun, we are having three contests.

- 1.) The first contest is a recruiting contest. The member who gets the most new members to join will win in that category.
- 2.) The second contest will be an article writing contest. The person who writes the most articles that meet the required guidelines will win this contest. The guidelines are, the articles must be over 500 words long and should be relevant to the topic of model trains or rail fanning. Articles posted on tamr.org will count toward this if they meet the guidelines.
- 3.) The third and final contest will be a photo contest. There will be two categories for this, one is a railfanning category and the second is a model train category. These images must be taken by you.

Here are the official rules. ALL participants MUST be 21 years or under to keep the competition fair as well as be in the Spirit of the TAMR (we are a Teen group). You must also be a member in good standing.

PRIZES:

The first prize for all 3 categories will win a free one year subscription to a train related magazine that you do not already subscribe to (if you win we will contact you so that you can indicate what magazine you would like a subscription to). If you win in any one category you will not win first place in the other.

The winner of the recruiting contest will also win a free one year membership as well as a HO Scale box car. If they do not model HO scale then a replacement prize will be substituted at that time.

The article category will have second and third prize categories. The first place will win the same prizes as the other categories, second will win free membership and a box car and third place will win a box car. This also applies for the photo contest category. You can only win ONE prize and not all prizes will be given out if there are not enough contestants. The president and editor will judge to make sure that the length of the articles are appropriate and that you are just not writing a ton of articles just to win the prize. The contest will run from now until December 31 2012 and the results will be announced in the January 2013 Hotbox. All articles for the May/June Hotbox MUST be submitted by May 1st. You can submit them to me by email at joshcohn@comcast.net.

REMEMBER YOU MUST BE 21 YEARS OR YOUNGER AND A MEMBER IN GOOD STANDING TO PARTICIPATE

I would like to personally thank Wilfred A. Roberge for generously donating the HO scale box cars.

Josh Cohn
TAMR President

SO there you have it, THREE (3) TAMR Contests!

- 1.) A membership/recruitment contest (who can get the most members to join).
- 2.) An Article Contest. (Who can write the most good quality articles, that is actual articles not just stuff thrown together for the sake of winning the contest, more on this as Articles are received).
- 3.) A Photo Contest, (2 Categories, Railfan/Prototype Train photo OR Model RR Photo); photo must have been taken by you.

PLEASE SEE BELOW FOR AN IMPORTANT SAFETHEY NOTICE

Let me add as an adult advisor, when it comes to the photo-contest, we take integrity and safety seriously.

If a photo is not yours please do not enter it (integrity) as that is cheating.

As for safety, that is of paramount importance, as the TAMR only endorses and condones safe railfanning. Please do not enter any photos which required trespassing or were taken by climbing on equipment (for instance from the top of a railcar, signals etc.).

We do not want photos taken by you if you were standing inside the gauge of the tracks (between the rails), in a tunnel taking a picture of a train outside of the tunnel, or one of a train on a bridge while you were on the bridge.

If you submit a photo that has any of these appearance's please explain how you obtained that photo (for example: I took this picture heading at me over the bridge, however I was not on the bridge and used my zoom lenses to crop out the foreground making it appear as though I was on the bridge OR I took a picture of this w/b train entering the eastern portal of the tunnel while I was standing at the western portal, I used my zoom lenses and zoomed in making it appear I was in the tunnel). Any photo with such an appearance must have such an explanation which will be printed alongside the photo as a way of explaining how to SAFELY obtain similar photos so as to avoid encouraging anyone trying to take similar photos by climbing out onto bridges or into tunnels.

- Wilfred A. Roberge

MY EAGLE SCOUT PROJECT

My name is Robert Lipiner. I am 16 years old and live in West Hartford, Connecticut. In addition to model railroading, I enjoy building gas powered RC cars. Besides my hobbies I am an avid Boy Scout in my local BSA Troop 44. My next step toward becoming an Eagle Scout is completing an Eagle Scout service project. For my Eagle project I plan to build an H0 scale model train layout for a local retirement community in my home town. This spring I am focusing my efforts on creating a layout plan and gathering enough materials and donations to do the bench work and to start laying track. My goal is to have the trains running by fall 2012. The making of the scenery will be an ongoing work in process where I want to involve the current residents as much as possible. Thanks for reading this article and allowing me to share my Eagle project with you. If you would like to donate anything to my project you can email me at any time at rlipiner@gmail.com.

Yours in Model Railroading,

Robert Lipiner

To Wilfred Roberge, a long-standing member of the TAMR:

From all the Members of the Teen Association of Model Railroaders, congratulations on fatherhood!!

THE LCL DOCK- a point of transfer for freight car photographs



A rare treat indeed – the sight of fallen flag equipment always thrills. This Atchison Topeka & Santa Fe hopper was spotted on the northbound 2:30 time freight to Green Bay on December 29, 2011. Both photographs are by the Editor.



MULLIGAN STEW



-A LITTLE OF THIS AND THAT-



By: Daniel Fiala

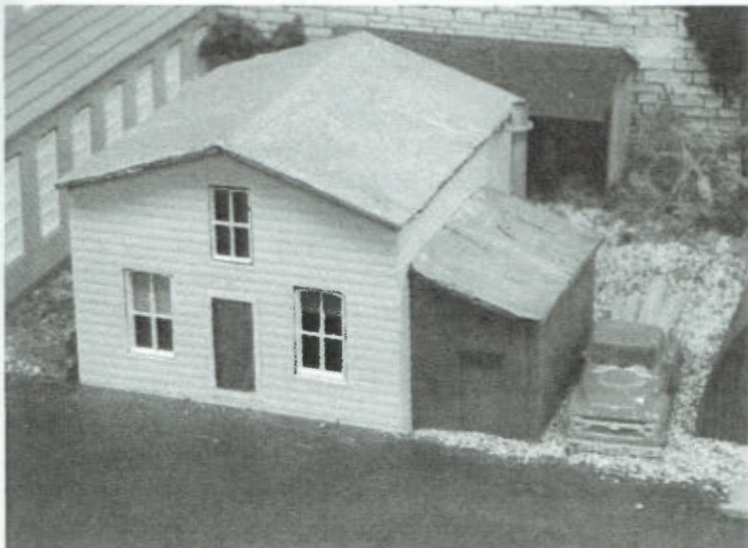
This month: Smorgasbord!

The Old Company Store

At the foot of Ellis Street, east of the old Hotel Karsten, stood the "Company store", a leftover from Kewaunee's pioneer days. This structure, no longer standing, was, as far as I can tell, built in the late 1850's or very early 1860's. Again, this is an educated guess on my part, but the structure was most likely demolished around 1990, making it about one hundred and forty years old! The reason I have such a keen interest in this building is that, on my layout, it is perfect for a lumber company's office, which was exactly its use for about the last sixty to seventy years of its existence. I did not make plans of this structure, but judging from the photo, I believe the dimensions are roughly 20'x30'. The photo with this article will allow you to study the structure if you so wish to model this piece of Kewaunee history.



The old Company Store



Garage Doors

Step one: two windows are needed each door. Between the castings and on the one destined to become the bottom of the door, cut off the recessed areas. A good way of going about this is to use a sharp no. 17 chisel blade and cut along the windows edge. Note: if you raided a structure for the windows and some of the edges are damaged, cut these parts off according to the instructions above. Also, to remove the plastic cement on the castings, use a sharp no. 17 chisel blade and these edges will be as good as new. Fig. 1 will show all this very clearly. Before assembly, carefully sand the areas of the windows where the surgery was done. Next, cement the two castings together using either super glue or plastic cement.

Step two: paint the doors the color of your choice. The usual procedure on shop buildings is the use of colors such as white, silver, gray or other closely related colors. I would suggest that you spray paint the doors so that you get all the nooks and crannies and an even finish.

Step three: cement in the window glass with clear parts cement. Or you can save money (by not shopping at Wal-Mart, ha ha) by using a very small amount of super glue and pressing the clear styrene into it. The last step, of course, is to install the doors. Cut an opening in your structure's wall 1 11/16" x 1 11/16". Then simply test them for fit and after everything is to your satisfaction, cement the doors in.

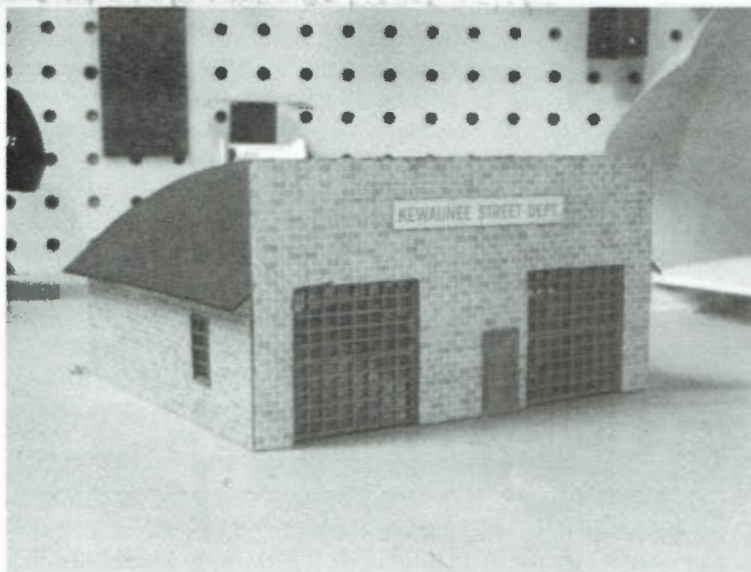
Materials List

Two (2) Walther's Roundhouse windows or equivalent (per door)

Super Glue; and Testors' Clear Parts cement.

Paint of your choice; spray paint is preferable.

Clear styrene





The TAMR Extra Board

Showcasing the work of our members

Scratchbuild a Silo for under \$15

by Paul Moses

Tools used:

NWSL Chopper
Hobby Knife
Hacksaw or tube cutter
Sandpaper
Airbrush or paintbrush
Blue painter's tape
Scissors

Materials used:

4' PVC pipe, 1 1/2" wide
Evergreen styrene: #4528 Metal siding
1/4" foam board
Walthers Cornerstone sash windows
Walthers blank decal paper, one sheet
Testor's Dullcote
Testor's plastic cement
Gorilla Glue
Wal-Mart ColorPlace gray automotive primer
ColorSmart brown acrylic paint
Rubbing alcohol, Paint thinner, or Lacquer
Powdered pastel chalks
Krylon Almond #53511 spray paint

Silos are a significant part of industrial America, because they store large amounts of bulk materials like grain, coal, and plastic pellets. Silos can be found at grain elevators, ethanol plants, food manufacturing factories, power plants, and almost any other industry. They can be concrete or made from modular corrugated steel, though concrete construction is most common. An industry can have anywhere from a single silo to more than 50. Best of all, silos are served predominantly by railroads. In the southern and western regions of the United States, grain silos are the most common type. Many towns in the southwest have at least one grain elevator, so a concrete silo would fit almost any locale, from the 1940's to the present.

There are numerous silo and grain elevator kits available to the modeler today. However, because of the injection molding process and the fact that styrene is so thin, all of these kits share a seemingly unavoidable flaw: two visible seams run the vertical length of the assembled silo, unlike the prototype. However, one can create a seamless silo by using a common, inexpensive builder's supply: PVC pipe. I scratchbuilt a string of four grain storage silos for a flour mill on my HO scale model railroad, using PVC pipe, strip styrene and foam board for the basic construction of the model. The space the flour mill occupied on my layout has little room for a silo - I took measurements and determined that the four silos would have to be about a foot high and 2" wide. I went to my local hardware store and purchased two 2' lengths of PVC pipe. PVC pipe is a great choice for modeling silos because it is produced in one piece, and therefore doesn't have the aforementioned seams. If you're making a significantly larger silo, it would be less expensive to purchase 10' lengths of the pipe. For modelers modeling in a scale other than HO, PVC pipe is offered in 1" to 4" wide widths, so you should be able to find the right diameter for your project. Keep in mind that the width measured is the inside diameter, not the outside. I cut the pipe I pur-

chased into 1' increments with a fine tooth hacksaw, although you could also use a tube cutter. Cutting the thick pipe sounds much harder than it actually is, and making the two cuts in the PVC pipe took less than five minutes. I discovered that it's easier to mark off your measurements on the pipe by wrapping blue painter's tape around the circumference of the pipe, instead of making a mark with a permanent marker. Now that you've cut the silos into their proper length, it's time to add a roof to the silos. I used 1/4" foam board to create the roof because I had it on hand, although you could easily use flat styrene. I traced the outline of the PVC pipe onto a scrap of foam board, and then cut it out with a sharp hobby knife and scissors. I then glued each roof to its silo with Gorilla Glue. [Gorilla Glue must be used extremely carefully in model railroad projects-it has a tendency to foam and expand as it cures-Ed.] Remember to follow the instructions on the bottle and wet one of the bonds before you tightly clamp it. Do this for all the silos you're creating. After adding the roofs to the silos, I glued them to a base, made out of a piece of foam board, in the configuration I needed.

Once you've made the main silo structure, it's time to paint it a concrete color. Be sure to remove the manufacturer's lettering so it won't show through. You can use paint thinner, rubbing alcohol, or lacquer, wiped on with a soft cloth. After removing the lettering, spray the entire concrete silo model with flat concrete-colored spray paint, in this case Krylon #53511 Almond, although you could substitute another similar variety of spray paint.

Now that the main silos are complete, the model will need a head house, which is the shed on the roof that spans the length of the combined silos. I chose to portray a head house made out of metal siding, which is fairly common for grain silos. I cut the pieces out of Evergreen #4528 0.8 x 0.4" metal siding styrene using the score-and-snap method. For shorter cuts, I used my handy Northwest Short Line Chopper II, a tool that seems to be useful for almost any kitbashing or scratch building task. I chose to cut space for two windows on one of the long walls with a hobby knife. After gluing together the walls and roof to the head house, I sprayed the head house with gray automotive primer spray paint.

After the head house had been painted, I installed Walthers Cornerstone sash windows, which I had on hand, leftover from a kitbashing project. You could also use any separately available sash window casting. I had previously painted the window frames brown, to match the color of the flour mill's window frames.

Once the paint had dried on both the concrete silo and the metal head house, I glued the two together. I lettered the back wall of the head house for "Midas Flour" in red lettering I printed onto decal paper off my home computer, and weathered both the silo and the head house. The silo was weathered with various colors of powdered pastel chalk, while the head house was dry brushed with rust-colored paint. After the completed silo structure had been weathered and secured with a coat of Testors Dullcote, I installed railings on the outermost silos. Silos are common structures that can be found in many industries. They generate a lot of railroad traffic, and are therefore worth modeling. Modeling a silo using PVC pipe and strip styrene is not only easy, but inexpensive, as I spent less than \$15 for materials to build this silo. By simply varying the width of the PVC pipe used, a similar silo can be built in any scale from N to G.

THE TOP SEVEN

*Top Seven things to do at a TAMR BOD meeting.
From the May 1996 Hotbox*

#7. Origami

#6. Stand up every few minutes, point to someone and say, "He's the gunman."

#5. Set a place for CZ (Chuck Zehner)

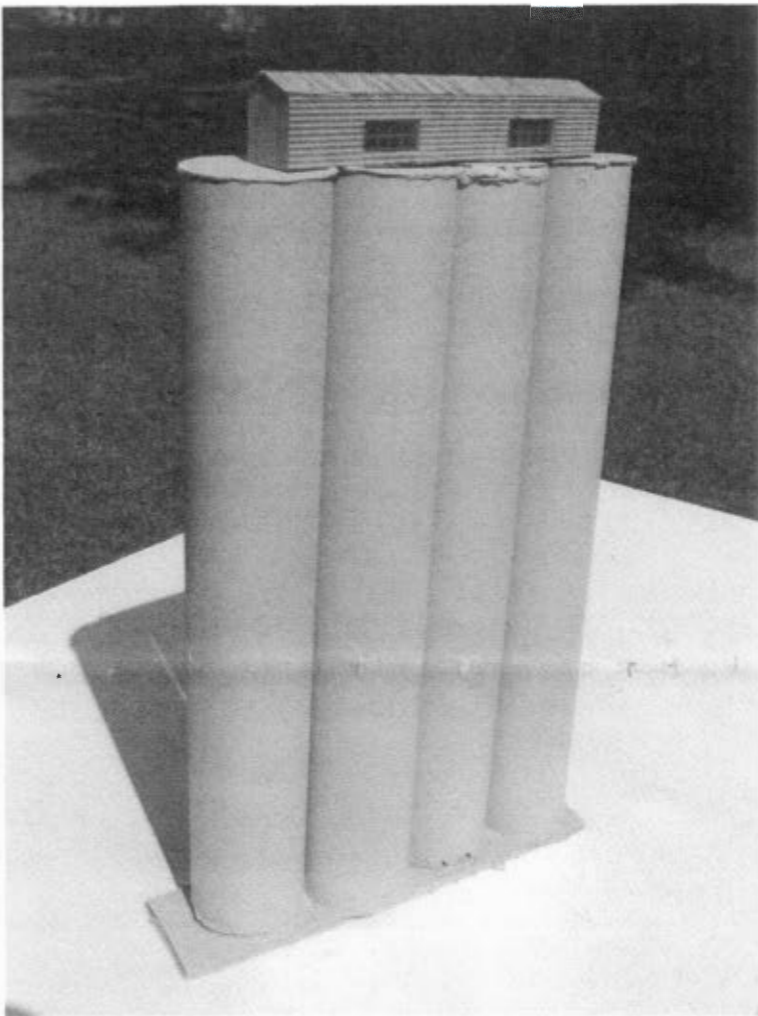
#4. Show how much better the NMRA BOD is

#3. Whenever you're handed papers, run out of the room yelling, "Adolf, I have the secret documents!"

#2. Fly into a rage whenever Conrail is mentioned.

And the number one thing to do at a TAMR BOD meeting is...

Bring your own accordion!



Paul Moses' finished concrete silos.



The Norfolk Southern GP-59 that was painted in Southern paint in the 1980's for the Southern Railway's centennial is to be repainted in NS black. Will Ebbert, photo.

2012 TAMR Membership Directory

Names in Boldface Type indicate Officers in the Organization

Total Number of Members - 38

Membership Status: REG= Regular 1 year; LT= Lifetime Membership; IH= Iron Horse; COM= Complimentary; (*) denotes Recipient of Free 1 Year Membership

Central Region: 12 Members

Name	Address	Phone	E-mail	Age/Scale	Status	Month Joined
Brad Beubien				30	LT	
Brandon Bookout						
Kevin EuDaly					COM	
Daniel Fiala				20 HO	REG	Jan. 2012
Editor, Central Region Representative						
Doug Kocher				58 Z/S	LT	
Ryan Lamb				16 On30/ N	REG	Jan. 2012
Jake Lange					REG	Sept. 2011
Robert Learmont				19 HO	REG	Feb. 2011*
Allen Maty				60 HO	LT	
Peter Maurath				32 N	LT	
Tim Vermande				55 HO/N	LT	
Charles Warczinsky				25 N	REG	Jan. 2012

Northeastern Region: 12 Members

Josh Cohn				16 AF	REG	Jan. 2012
President						
Eli Cook				13 HO	REG	Jan. 2012*
Connor Chinoy					REG	Sept. 2011
John Frechette				13 HO	REG	Feb. 2011*
Jacob Gray				20 HO/G	REG	Jan. 2012
B.J. Karnavas						
Mark Kaszniah					LT	
Robert Lipiner						
Ben Rechel				18 HO	REG	Jan. 2012
Wilfred Roberge				33 HO	LT	
Jamie St. Onge				16 HO/O	REG	Jan. 2012
Northeastern Region Representative						
Newton Vezina				HO	LT	

Southern Region: 9 Members

Nathan Day				O	REG	Mar. 2011*
Payton Register				11 N	REG	Oct. 2011*
Carlton Wilson				67 HO	IH	Oct. 2011*
Will Ebbert				14 O/On30/HO	REG	Jan. 2012
Treasurer						
Alexis Furtak				N	REG	Mar. 2011*
Radisson McGuire				19 HO	REG	
Lloyd Neal				59 HO	LT	
Sawyer Berry				N	REG	Jan. 2012
Southern Region Representative						
David Lowe, NMRA					COM	

Western Region: 5 Members

Joe Bohannon				28 HO	REG	Feb. 2013
David Burris				61	LT	
Chad Lonski				G	REG	Mar. 2011*
Jack McCandless				12 HO	REG	Feb. 2011*
Ben Hawken					REG	Jan. 2012
Western Region Representative						

Thank you for tuning into this month's broadcast and see you next time!