

ISBN:1093-622X

THE HOTBOX

May 2009 Issue # 430



the official publication of the teen
association of model railroaders
Some restrictions apply, see store for complete details.

THE HOTBOX

May 2009 Issue # 430

ON THE COVER: . An Atlantic Coastline inspection train behind E6A 519, bursts out of the north portal of the Spatrtansburg, NC tunnel on it's way to Kentucky via the Clinchfield Ry.. *Modelwork and photo by Jeffrey Andreski.*



FORM 19

A message from your editor in chief.

Editor –Peter Maurath
Publisher-Peter McRath II
Contributing Columnist–
Steven Goehring
Jeffrey Andreski
Art Director-Duh Vinci
Photographer– Jay Vecce
Librarian– Is telling the Mayflower joke to everybody.

Contributions

Send your check to my...oops, sorry, you mean that type of contribution. We here at The Hotbox are always in need of new material. Here are a few examples:

Feature Articles:

This is what we're always looking for. From a railfan trip, to your home layout's story, or your own story. Size can range from a paragraph to a full page. Pictures are always appreciated.

Columns:

Full of great tips on layout improvement? Got a million reasons EMD is better than GE? Start a monthly, or bi-monthly column. Size same as features.

Photos and Drawings:

Got a great photo collection you want to show-off? Got a notebook full of railroad cartoons, or layout logos? Send them to the Hotbox staff for consideration.

Send all Submissions, or Hotbox questions to:

Peter Maurath
13212 Wilton Ave.
Cleveland, OH 44135

Or email at:

TAMRHotboxEd@sbcglobal.net

GET WIRED

Check out TAMR on the web at: www.TAMR.org
Or Join our online yahoo news group, by contacting:

pivotpin@TAMR.org

(By joining you'll receive updates on TAMR news and events, plus be connected to dozens of other TAMR members. There's no cost to join this group, do it today!)

If you have a web site relating to trains or model railroading, why not join the TAMR web ring. It costs nothing, and provides a link for all TAMR members to find other TAMR sites. To join, send your e-mail address and web site URL to:

pivotpin@tamr.org

Don't leave me with the Germans!

You're back! As an I for another month. After letting the lunatics loose on the April issue we have returned to some semblance of normalcy here at 1 TAMR plaza, though I can't guarantee that everything has returned to normal so be on the lookout for random photo's of babies popping-up at any time and our initials butchered mercilessly (I think I got them all!)

While much of what you saw last month was general silliness, what wasn't was the Payne Awards. My plan is to make this a yearly event, honoring those who contribute

the most to the TAMR and the Hotbox and partially just to get rid of all this cool stuff so I'll stop playing with it. All but one of our award winners has contacted me for their prizes. James, I know you are a busy fellow these days with CSX and all, but when you get a chance please contact me to claim your much-deserved prize.

In other news. Jeffrey Andreski has been appointed Southern Region Representative due to the loss of Mat-

thew Roberts as a member. Jeffrey is from Loveland, CO (which according to the guy at the post-office is a popular postmark during certain sappy, luvy-duvy holidays, bitter, just a tad.) and has become a regular contributor to *The Hotbox* and an outspoken supporter of our group and what we can/can't do to improve it. If you're from the Southern Region or any Region for that matter, drop Jeffrey a line and say hello (email below).

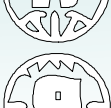


Article, and photo files are still pretty bare here. With over fifty members we can do better than just having three people submitting articles (that in-

cludes me by the way). I'm not looking for much, one page or less, talking about the hobby, or trains in general (past, present, future). Photo's (especially cover shots) need to be of the highest resolution possible, 4-8 megapixel is preferred and a caption is always nice.

That's all from my desk, as they say, see ya trackside!•

Jeffreyandreski@aol.com



WELCOME TO AMERICAS SOON TO BE FASTEST GROWING ARTICLE SENSATION, RAILFAN RANTINGS. IN THIS COLUMN I POSE A QUESTION TO OUR MEMBERS VIA THE TAMR ONLINE GROUP AT YAHOO, AND HOPEFULLY COME AWAY WITH SOME INSIGHTFUL, AMUSING, AND POSSIBLY SILLY ANSWERS. THIS MONTH'S QUESTION:

If you were President of Amtrak, and given a blank check by Congress, what would you do?

Steven Goehring, Nazareth, PA: "OK, Mr. Ambition is on the scene here!"

Step One: stage a hostile takeover of Norfolk Southern

Step Two: Fully triple-track the Philly-Pittsburgh line.

Step Three: upgrade Pennsylvanian services to the point that it's not worth driving across Pennsylvania anymore. Put express intermodal on track to wipe extraneous trucks out of the state. PA's eternal road work ceases. :D

Step Four: Sponsor commuter lines across PA. Finish the Scranton-New York project, expand Philly commuter lines to Reading, and connect Allentown-Bethlehem -Easton with NYC and Philly. Also put commuter trains back into play in Pittsburgh.

Step Five: Pander to Pennsylvania's every passenger railroad need to set an example of a railroad-friendly state. Show the world that the US may not be capable of proper passenger service... but the Keystone State is!

Jeffrey Andreski, Loveland, CO: "Well let me see, a blank check is a blank check, so lets spend a trillion dollars. Well, if the banks can have that much so can

the Railroads. I'd give all the money needed to fix the North East Corridor, new equipment, etc.. But, that's not my project. My project would be to restart the gas turbine version of the Acela locomotive tests(which were canceled a couple years ago) and to get them fully operational. Plus, all the infrastructure needed, so that you can have a trans-continental high speed rail system. I had to figure out something for Amtrak to do in the middle of the Wild West."

Charles Warczinsky, Sandusky, MI: "Buy more locomotives and cars. Then increase services in under-utilized corridors. For example, any route out of Chicago would have enough locomotives/ cars to run hourly service on those routes. Also, I'd invest in the infrastructure along those lines, adding capacity to those routes so as to not inconvenience the host railroads any more with the increase in traffic. Oh yeah, I'd also build a couple more drawbridges at CP492(?) on the NS Chicago line (one of the biggest Amtrak bottlenecks going into/out of Chicago from the east). I like blank checks...I'd probably also buy (condemn) the building above Chicago Union Station and build a 2nd and 3rd level of platforms to handle this increased passenger traffic. One last thing, I'd also invest company funds (heavily) in the stock of the Class 1 railroads so as both to earn a continuing return on investment, and to give the company more room to lean on its host railroads for better service and more expedited service."

Sawyer Berry, Aiken, SC: "Invest in infrastructure to make passenger trains more appealing to the public (for example, work on de-congesting the rail lines to minimize delays)"

WANT TO JOIN IN THE RANTING? THEN JOIN THE TAMR ONLINE GROUP AT YAHOO GROUPS.COM. SEE PAGE TWO FOR MORE INFO.

The Hotbox tip of the month

TRY ADDING HUBCAPS TO YOUR VEHICLES. USING A SMALL BRUSH ADD A DROP OF SILVER PAINT TO THE CENTER OF EACH WHEEL. YOU'LL BE AMAZED AT THE RESULTS.



TEEN ASSOCIATION OF MODEL RAILROADERS



Camera nerds unite!

THE 2009 TAMR PHOTO CONTEST!

It's back! If you're a TAMR member between the ages of 10 and 19 who thinks they're the next O Winston Link, enter the TAMR Photo Contest. The best five shutterbugs will have their pictures featured in *Model Railroad News*, but that's not all! The grand prize winner gets their choice of prizes from the TAMR Prize Vault.

HOW TO ENTER:

Send your digital or scanned print or slide (jpegs please) to:

pencntrl1@sbcglobal.net

(type "photo contest" on the subject line)

Or snail mail your print or slide to:

TAMR Photo Contest, 13212 Wilton Ave.,
Cleveland, OH 44135-4918

All entries will be placed on the TAMR yahoogroups website. Once compiled, members will be allowed to go to the site and vote for their favorite five. Once voting is closed, several judges will tally up the votes and make the final decisions on the five winners. The winners will first be showcased here, then in an upcoming issue of *Model Railroad News*. The grand prize winner receiving their prize then.

RULES:

-You must be a valid TAMR member between the ages of 10 and 19.

-One entry only per member!

-Your entry must be yours, taken by you!

-Your entry can be no more than two years old.

-You must include a complete caption with date and location.

-No entries will be accepted that have won at a previous National Contest (i.e. West Springfield, or this event)

-No digitally altered photographs

-Any winner must be prepared to resubmit their entry to MRN as a jpeg at 1024x680

-Include postage if you want your snail-mail material returned.

-All mailed material is sent at your own risk, the Hotbox is not responsible for lost material.

-Decisions of the judges are final.

TIMELINE:

-Entries will be accepted now till June 26th.

-Voting on your favorite five begins July 6th at: [HTTP://groups.yahoo.com/group/TAMR](http://groups.yahoo.com/group/TAMR) (click on photos). This is in the photo section, not files and you must be a member of the online group.

-Voting ends July 20th. Winners will be announced and shown in the August Hotbox, and a TBA MRN.

HOTBOX NEWS HOTBOX NEWS HOTBOX NEWS HOTBOX NEWS

HOTBOX NEWS

HOTBOX NEWS HOTBOX NEWS HOTBOX NEWS HOTBOX NEWS

When news breaks, we fix it!

-**OMAHA, NE**, Union Pacific (UP) announced April 13th, that they will be not only be resurrecting paint schemes of railroads now under their corporate banner (i.e. fallen flags) but will now also be returning retired and vintage equipment back to operation to, "maintain the proper protection of our corporate image", says Milton Vorhees UP's Director of Marketing. "To do this we will need to bring back at least one representative of every model of locomotive, steam, diesel or electric. Several are already available to us through our heritage program such as the 844, or 3985. Other's though will have to purchased from private hands, cities, and other entities, and still other models will need to be completely built from the ground up, such as the gas-turbines, or U50's. We're getting the boys in Cheyenne working on that last one." Estimates put the resulting copywrite licensing fees that will be added as a result of this program in the tens of dollars.

-**CHICAGO, IL**, To help ease the relentless terminal congestion that plagues Chicago, causing endless delays, Indiana Harbor Belt Ry. (IHB) has developed a giant crane along with manufacturer National Crane Co. called the NC050, that will lift rolling stock from it's arrival point and drop it onto it's departure track saving many hours of switching and shifting from one railroad and terminal to the next. The cost estimated to be \$500 Trillion is according to Jeff Williams from the IHB "A small price to pay for exponentially improved cycle times, plus Union Pacific has already committed a portion of it's licensing fees towards the costs." When asked what the city thought about giant crane towers across the landscape, Jeff had this to say, "We're still at present working out the zoning issue, but were are also exploring the possibility of a floating crane system using giant dirigibles."

HOTBOX NEWS HOTBOX NEWS HOTBOX NEWS HOTBOX NEWS

HOTBOX NEWS

HOTBOX NEWS HOTBOX NEWS HOTBOX NEWS HOTBOX NEWS

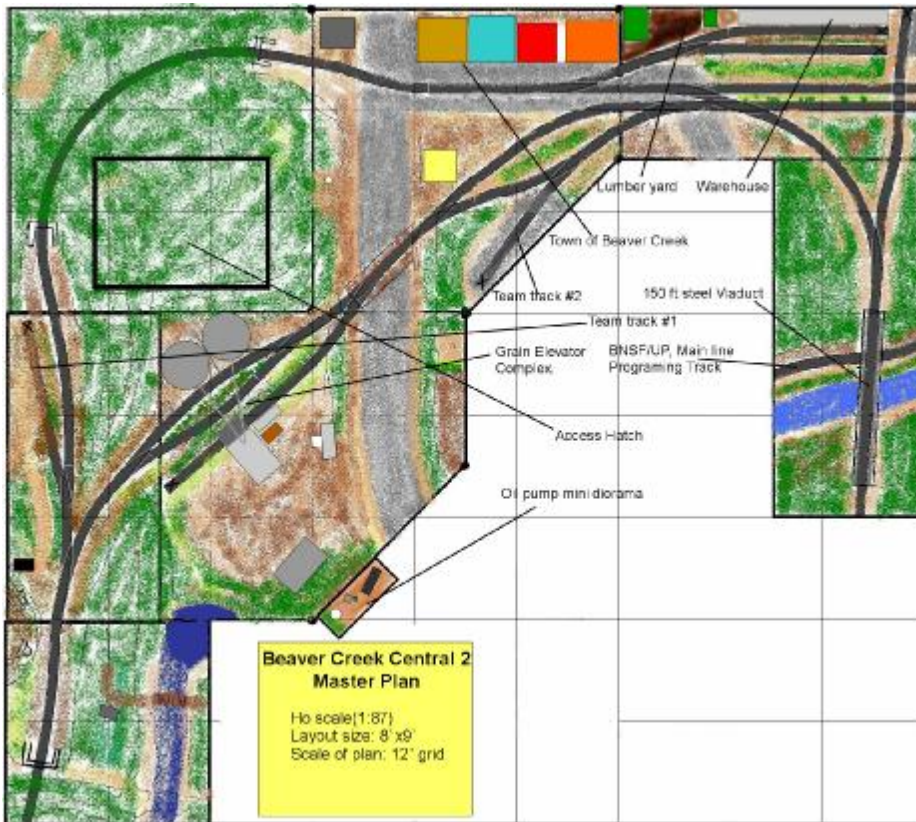


TEEN ASSOCIATION OF MODEL RAILROADERS



All About Layouts

BY: JEFFREY ANDRESKI



In the hobby of model railroading, I don't think there is really anything better than building a new layout. Some may disagree, but for me it's a great experience. This experience is happening for me at this time. I've only had a couple previous layouts, so I haven't had too many of those experiences. That story was told in last month's Hotbox so I won't say any more about my previous layouts. Now, over the past 1 1/2 years, I've been working on my current HO scale 8'x9' layout. If you look at this article's pictures, some of you might say that I haven't done that much work on the layout. In some ways this is true, and perhaps, to make it even worse is the

fact that the first diorama/module was built a year before I started the layout. But, I prefer to work at a slower pace. By doing this, I avoid a lot of mistakes caused by rushing to complete a part of a layout and having problems later.

The layout, as you probably can tell by now, is made up of modules. As you can tell from the layout plan, it is a large switching layout. By looking at the plan, you might say that there is enough room in the plan area to have at least a small loop of track. While this is also true, I had to make some hard decisions when planning the layout. The major decision was: Do I want to have con-

tinuous running or do I want to have realistic scenery and operation? Well, I chose the latter of the two options, and I am happy with my decision. As of late, I have figured out a way to enable me to have continuous running, but that is a ways off and will require a lot more planning. Yet, it doesn't involve changing the master track plan in any way.

In the past, I had tried to design my track plan on a computer, but I had too many problems so I just didn't bother using it anymore. Then, our distinguished President showed me how easy it was to do. Now, track planning software is one of my best tools for track placement. But, no amount of planning can account for all the unexpected issues that come up when building a layout. In the case of my layout, besides the usual building and track issues that always seem to present themselves, I determined that it was too far to reach several parts of the layout. Because the layout base and almost the entire construction are made of foam, it will not support my weight. So, I had to cut a large 15"x18" access hatch in my corner module.

Module construction has worked very well for me even though I haven't been able to run trains for some time. The thing that I like most about module construction is the fact that you can have a finished scene on one module and have just bare foam on the adjacent one. This helps to avoid hobby burnout because you aren't doing an entire process at once. This works well for me because, you can be working on laying track and look over and see a completed scene.

Continued on page seven

THE HOTBOX
May 2009 Issue # 430

TEEN ASSOCIATION OF MODEL RAILROADERS



The Top 1 CLASSICS

By: Peter Maurath

Top Seven rejected Amtrak Acela train slogans

#7. "Acela, a train now faster than most city buses."

#6. "It's electric, boogie, oogie, oogie!"

#5. "Acela, the wannabe TGV."

#4. "Acela, for the rollercoaster enthusiast in all of us."

#3. "Unlike a plane, if you crash in the Acela, you won't plummet from 30,000 feet."

#2. "Enjoy the view of urban decay at 150 mph."

And the number one rejected Amtrak Acela slogan...

"Acela, the train with the kickin' wing logo."

The Extra Board

New Memberships-1 ☺

Christopher Shannon
34 Ladyslipper Dr.
Newmarket, NH 03857
(603) 659-7692

Thomas_s368@yahoo.com
Birthdate: 12/09/94 (14)
Scale: HO

Renewals-4

Gregory Jackman
Brian Kul p
Benjamin Hawken
Austin and Jonathan Hight
Jacob Gray

Expiring Memberships-8

Collin Rienhart
Ben Neal
Willie Roberge
Chris Burchett
Mark MacDougal I
Austin MacDougal I
Andrew Matarazzo
Doug Engler

Present Member Count- 50↓

Editors Note: This will be a feature every month showing everyone, who's joining, who's staying and who's going. If your name is up there I hope it's in the renewal section or will be next month.

The Hot box Funny name of the Month

Pulled at random from the Lake Region Telephone Directory of the Penn Central Telecentral Phone Network, "There is always time for courtesy."

M.R. Evil sizer

This concludes the Hotbox funny name of the month, Provided by the Penn Central, Telecentral Phone Network. "when you answer the phone you are the company."

THE HOTBOX
May 2009 Issue # 430

TEEN ASSOCIATION OF MODEL RAILROADERS



From page five



I wonder who cut a big hole in my layout base?

It gives you a lot of motivation to complete the task at hand. Another reason to have a module layout is portability; not necessarily to take the layout to shows, but to be able to enter a module in a contest, and to be able to get the entire layout out of the room, if needed. None of those things were possible with my last 4x8' layout. It had a tall mountain with a tunnel, which would not fit through the door in one piece.



Grain Elevator complex module.

My scenery contours are made using the cardboard strip method, using mostly Woodland Scenics products to landscape the layout. Track consists of Atlas code 83 turnouts and flextrack. Well, I'm not sure what more I can say about my current layout except, that with only 7 feet of mainline track operational, I'm working hard to extend the line so that I can get some trains running soon. So until next time, I'll be working on the railroad. ©

WINTER CONVENTION PHOTO TOUR PART I



Our tables at this past years Big Rail road Hobby Show held in West Springfield, MA at the Eastern States Exposition Center (the Big E). Held January 24-25. We featured two operating layouts this year one in HO the other,



One of the many awesome modules on one of the many awesome layouts on display at the above mentioned train show. This was on the Northeast N-trak layout featuring a ore dock loading scene complete with scratchbuilt ore boat. *Peter Maurath, photo.*

THE HOTBOX
May 2009 Issue #430

TEEN ASSOCIATION OF MODEL RAILROADERS



The TAMR is a non-profit organization created to promote, foster, and encourage young people in the hobby of model railroading, the activity of rail fanning, and the preservation of the history, science and technology thereof. Reprinting of the Hotbox is Prohibited without the express written consent of the Teen Association Of Model Railroading.

Membership to the TAMR includes an eleven month subscription to the Hotbox, the annual directory of members, quarterly regional newsletters and an election to participate in all TAMR events. The available membership categories are as follows: Regular (under 21)-\$15, Associate (21 and over)-\$20, International (outside US)-\$18

To become a part of the TAMR, or to renew, send your information to:
Tim Vermande, TAMR Pivot Pin, 17883 Tidewater Dr., Fishers, IN 46037, USA

Offer good why supplies last, negative equity applied to new loan balance, must take delivery of dealer stock, see store for complete details. No purchase necessary, void where prohibited. For a complete list of rules, regulations, and the best darn restaurants in Wahoo, NE send a SSAEBDR to the above address. If you are at all unsatisfied with this hotbox, please return unused portion for a complete blow-off by our staff. Thank you!

COMING SOON TO **THE HOTBOX:**

- Steven Goehring shares a few tips.
- All the newts that's fit to print!

COMING SOON TO **THE TAMR:**

- Photo Contest voting, better get your submission in!
- TAMR Directory, this July.



The Teen Association of Model Railroading

"Putting the future of model railroading on the right track."

13212 Wilton Avenue
Cleveland, OH
44135-4918
tamrhotboxEd@sbcglobal.net



Before I go...

