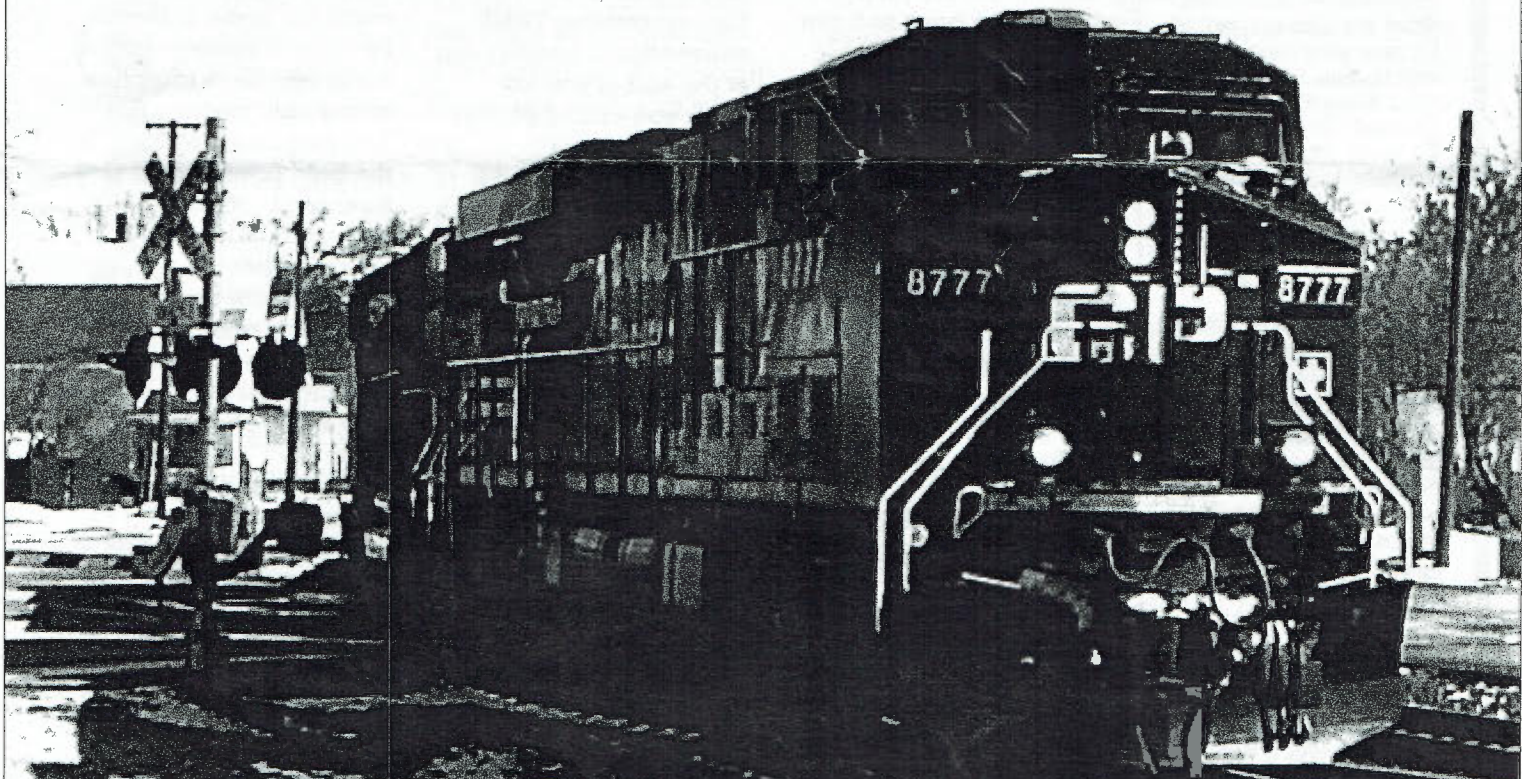


THE HOTBOX

December 2007
Issue # 413

ISBN:1093-622X



**THE OFFICIAL PUBLICATION OF THE TEEN
ASSOCIATION OF MODEL RAILROADERS**

Pre-lit in sizes of 6', 8', and 12', natural or white.



Editor—Peter Maurath
Publisher—Peter McRath II
Contributing Columnist—
 Steven Goehring
Art Director—Duh Vinci
Photographer—Jcy Vecce
Librarian—Is busy working on her
 Gingerbread Library branch.

CONTRIBUTIONS

Send your check to my...oops, sorry, you mean that type of contribution. We here at The Hotbox are always in need of new material.

Here are a few examples:

FEATURE ARTICLES:

This is what we're always looking for. From a railfan trip, to your home layout's story, or your own story. Size can range from a paragraph to a full page. Pictures are always appreciated.

COLUMNS:

Full of great tips on layout improvement? Got a million reasons EMD is better than GE? Start a monthly, or bi-monthly column. Size same as features.

PHOTOS AND DRAWINGS:

Got a great photo collection you want to show-off? Got a notebook full of railroad cartoons, or layout logos? Send them to the Hotbox staff for consideration.

SEND ALL SUBMISSIONS, OR HOTBOX QUESTIONS TO:

Peter Maurath

OR EMAIL AT:

TAMRHotboxEd@sbcglobal.net

GET WIRED

Check out TAMR on the web

at: www.TAMR.org

Or join our online yahoo news group, by contacting:

pivotpin@TAMR.org

(By joining you'll receive updates on TAMR news and events, plus be connected to dozens of other TAMR members. There's no cost to join this group, do it today!)

If you have a web site relating to trains or model railroading, why not join the TAMR web ring. It costs nothing, and provides a link for all TAMR members to find other TAMR sites. To join, send your e-mail address and web site URL to:

pivotpin@tamr.org

My caddy stole my clubs and ditched me!

December 2007

Issue 413

THE HOTBOX

ON THE COVER: . A CP run through train enters Elkhart from the east behind fresh looking CP 8777. Charles Warczinsky, photo.

FORM 19 A message from your editor in chief

Merry Christmas everybody, and welcome to the final issue of 2007! With it being the Christmas season I decided to give you members a gift this year.

The Hotbox is now available online! I've spent the last two month's working out the bugs and can offer you member's a digital PDF version of the Hotbox. That means every issue is a color issue cover-to-cover, it will arrive faster and no longer mangled by the USPS. Here's how it's going to work: If you wish to receive the online version of the Hotbox, just let me know via email (address to the left) and I'll add you to the online mailing list.

If you opt for this YOU WILL NO LONGER RECEIVE PAPER VERSIONS OF THE HOTBOX, except for election, convention, and possibly directory issues. Also keep in mind, there is no change in you membership fees. Sorry to disappoint you, but considering our rates haven't gone-up in almost twenty years you're already getting the paper Hotbox for a steal anyway.

If you wish to be a part of

the online Hotbox mailing list please contact me asap so you don't miss an issue.

Only two month's to go till Winter National Convention time! The longest running TAMR convention is coming -up at the end of January. Mark you calendars and be sure to attend, even if it's just for the massive train show, it's well-worth a visit, and you can always swing by the TAMR table and meet nice folks like me, and other member's. Check out the ad on page four for all the lowdown on this great event. Seeya there!

Speaking of conventions, the work moves ahead as I explore the possibility of hosting the Summer National, next July, here in Cleveland. Details such as meeting space still need to be worked-out. Once I get the green light there, I should be able to host it. A formal announcement will be made next month.

Another month and yet again, **NO NEW MEMBERS!** Well, this is it folks, our last month to steal...I



mean get some of Dave Swanson's money. For those who have forgotten or are only reading this now because they saw the bold print. Dave Swanson is offering \$15 to the group for every new member we sign-up between now and the end of the year. Along with that I am offering discounts on membership and cash prizes though my TAMRPoints program. Sadly since this was announced we've been in the biggest new-member drought in years. Time to finish out the year on a good note. Get out there, host a table at a show, put flyers in a hobby shop, invite your friends, and let's grow this group, and our bank accounts at the same time! I'm out of space, **Merry Christmas from all of us here at the Hotbox to all of you, God Bless!**



WELCOME TO AMERICA'S SOON TO BE FASTEST GROWING ARTICLE SENSATION, *RAILFAN RANTINGS*. IN THIS COLUMN I POSE A QUESTION TO OUR MEMBERS VIA THE TAMR ONLINE GROUP AT YAHOO. AND HOPEFULLY COME AWAY WITH SOME INSIGHTFUL, AMUSING, AND POSSIBLY SILLY ANSWERS. THIS MONTH'S QUESTION:

what item(s) would you like to see mowed down by a freight train?

Doug Engler, Fulton, NY- "I think they should have 20 fish tanks filled with the slime from all the Nickelodeon shows. Followed up by a "Tower of Dew". Get a bunch of Mountain Dew cans and bottles and see what happens next. The next scene should be a bunch of old Yankees baseball stuff. (only after fitting it with Red Sox Championship Logos!)"

Andrew Matarazzo, Old Bridge, NJ- "Hahaha, this could be the best one yet... does a truckload of mimes count as people or animals? How about a giant stack of toasters? You can run them over with a AEM-7 toaster doing 125 mph."

Newton Vezina, Springfield, MA- "In the spirit of recycling, lets begin the show with a bunch of old 30 inch (must be the old picture tube type) TVs stacked on the track in a pyramid as there should be plenty of these around. Next scene: a selection of old bulky computers, printers and monitors set on a fully furnished work station surrounded by a glass cubical in celebration of ones retirement from the work force. We can then run a 110, oops!, I mean 115 ton diesel locomotive over a worn out 4 x 8 "HO" model railroad constructed from plaster, wood and pa-

per mache', topped with 100s of those two dollar cars found underneath model train show tables. How about the idea of running over 20 fish tanks filled with tomato soup or that "orange stuff" (squash, no pun intended) left over from Thanksgiving! After dark we can repeat this same technique by running over 20 fish tanks filled with the same liquid found inside those colorful glow sticks left over from all the 95% off Halloween sales. Have you ever wondered what would happen if a "speeder" and a "toaster" just happened to be on the same track and met on the Northeast Corridor? To be continued..."

Steven Goehring, Nazareth, PA- "In the spirit of 70's comedian Gallagher, I would like to run down: A GIANT WATERMELON!! !!!!! Use a Pennsy boxcab motor at 70 MPH and you would have one heck of a Sledge-O-Matic."

Charles Warczinsky, Sandusky, MI- "Maybe a large stack of surplus Hotboxes? Seems like I have a few extra copies from the "old days" lying around somewhere yet... Or possibly several large stacks of old Trains, Railfan & Railroad, Model Railroader or other publications, stacked 20 feet or so high, and several rows deep across the width of the tracks. If there were enough, it would be interesting to see how much (if any) damage would be done to the train as well..."

WANT TO JOIN IN THE RANTING? THEN JOIN THE TAMR ONLINE GROUP AT YAHOO GROUPS.COM. SEE PAGE TWO FOR MORE INFO.

THE HOTBOX FUNNY NAME OF THE MONTH

PULLED AT RANDOM FROM THE SOUTHERN REGION TELEPHONE DIRECTORY OF THE PENN CENTRAL TELECENTRAL PHONE NETWORK, "THERE IS ALWAYS TIME FOR COURTESY."

M.L. EVILSIZOR

THIS CONCLUDES THE HOTBOX FUNNY NAME OF THE MONTH, PROVIDED BY THE PENN CENTRAL, TELECENTRAL PHONE NETWORK. "WHEN YOU ANSWER THE PHONE YOU ARE THE COMPANY."

RAILROADS IN NORTHWEST INDIANA GT



Written By: Charles Warczinsky

All photo's by the author

Elkhart, Indiana

Home to Norfolk Southern's massive Elkhart Yard, Elkhart has lots to offer railfans. Following the NS mainline east from South Bend, one can see most of the action from Indiana State Route 933. SR 933 is also probably the best way to get a glimpse of the action within the yard as well. SR 933 actually forms the yard's north border. Although no tracks cross 933, two mainlines run directly parallel to 933 until it veers away entering downtown Elkhart. In addition to an extremely wide shoulder on the south edge of 933, there are several other spots at which one can quickly pull off the road to get quick photos of some of the rare (or not so rare) power on the through trains, such as the many blue Conrail units which still pass through Elkhart on a regular basis. One specific location is a dirt lot across the road from the fuel pads, just west of the point at which 933 veers away from the tracks to enter the city.

Following 933 on into Elkhart, one passes through several traffic lights enroute to the center of town. The downtown Elkhart area is nice enough, with several (occupied) multi-story buildings lining Main Street. Taking a right onto Main, and passing through more traffic lights, one passes the post office, and comes to a small fork in the road. By taking a right at the fork, and entering

the parking lot on the south side of the road, you will wind up in the parking lot of the Elkhart Depot. The depot is an old building, slowly deteriorating due to lack of funds and a not-yet-begun restoration by the City of Elkhart, which also owns the building. In fairly recent times, the building housed the Amtrak station for the Elkhart stop, but not much else.



ELKHART & WESTERN POWER PARKED AT THE E&W TERMINAL IN ELKHART, IN.

Both the east and west ends of the depot building have parking spaces, although some is allotted to overnight Amtrak guests. The depot's platform affords a very nice view of trains passing into and out of Elkhart yard, although one needs to be careful as the brickwork is less than 100 percent complete these days.

Just across the tracks from the Elkhart depot is one of Elkhart's finest museums. The National New York Central Railroad Museum is housed in the former NYC RR freight house. The museum has many interesting displays, but some of the highlights include the restored E8 locomotive (complete with accessible cab, from which passing trains can be viewed), and the Penn Central GG1 on the property.

Elsewhere in Elkhart, shortline Elkhart & Western's locomotives can be viewed relatively easily. The E&W "terminal" consists of three tracks behind a shopping plaza just north of downtown. Although a construction company's office building shelters the locomotive storage area from a nearby parking lot, the two GP units can typically be seen quite well from other parts of the lot.



BNSF 1030 IS WESTBOUND AT ELKHART

Continued on next page.

One of the nicest things about Elkhart (from a railfan perspective, anyway), is the steady stream of trains in and out of town. Elkhart lacks quiet zones (at least, the last time I checked there were none), so if you're at either the depot or the museum, you can hear trains coming and going. Although it's often times hard to tell (at first) if the train you hear is coming or going, the audible whistle signals add a nice touch to the railfan experience.



NS 6766 LEADING AN EASTBOUND INTERMODAL TRAIN OUT OF THE ELKHART YARD PAST THE OLD NEW YORK CENTRAL DEPOT IN DOWNTOWN ELKHART, INDIANA.

Just outside of the yard, to the east (within a couple miles) is a location (I believe it's called Hadley) where the outbound tracks leading the way east of the yard are often used to hold trains waiting to get into the yard. On a not-so-nice day a couple months ago, I caught three westbound NS trains parked here, all viewable from a nearby parking lot, and all with NS widecab locomotives leading. The extra advantage to the location is the 7-11 behind which the locomotives are parked.

One extra benefit to railfanning in Elkhart is an agreement with CP Rail in which CP's trains from Canada to Chicago cross the Michigan-Ontario (CA) border in Detroit, and hop on NS rails to Chicago, passing through Elkhart. These trains used to cross Michigan on CSX, and the switch resulted in several additional daily trains through Elkhart.●

The Hotbox Definition of the month.
way=bill

\ wā-bil \ n : Your response to your friend Bill when he says, "no way!"

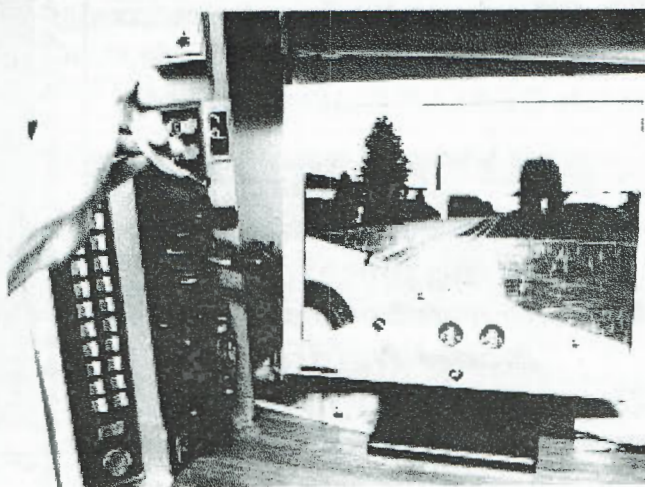
EASY CONVERSIONS FOR GREAT TRAIN-SIM FUN

Hints from Steven Goehring

Railfanning and model railroading are plenty of fun, but wouldn't it be fun to actually drive the train? No, not just sit there and push keys to move the throttle or blow the horn, but to have an actual feeling of driving a train without the unreasonable insurance problems. If you have a Raildriver control unit from P.I. Engineering (www.raildriver.com), you can make a few minor modifications to enhance the feel of realism. Try these only at your own risk, however!

One trick I tried was setting the Raildriver on its side, leaning against a freezer standing next to my basement computer. A little duct tape secures it to my computer desk. MY favorite change, however, was installing the horn cord. I drilled a hole in the Raildriver's horn lever and ran a piece of string through it, tying it around the lever. I then tied the other end to the freezer hinge (you could use a hook in the wall or something similar.) I then wrapped a few layers of masking tape around it, giving the cord some mass.

With the upright control unit and homemade horn cord, my Raildriver gives the feel of the classic locomotive control stand without having to do extensive modifying. You could complete this project in one evening and still have plenty of time to run trains. Just be sure to pick a route with lots of grade crossings and turn your PC's volume wayyyyyy up, and you'll have that real railroad experience in no time!●



The Top 7

By: Peter Maurath

"From the Home office in Cleveland, OH, it's tonight's Top Seven List!"

Top Seven rejected Model Trainsets

#7. The Amtrak Lakeshore Limited Set (never delivered to stores in time).

#6. BNSF Freight Hauler set (canceled due to lawsuit from Nike Trainset people).

#5. Union Pacific Challenger Set (overpriced due to trademark agreements).

#4. US Army Combat train, C4 included.

#3. ZZ gauge train set, microscope included (for those with REALLY limited space).

#2. Penn Central Roach Coach Express Set (too many missing pieces).

And the number one rejected Model Trainset...

The rail-trail trackless, equipmentless train set, cyclists included.

THE EXTRA BOARD New Memberships-0

Renewals-1

THOMAS KONCZOL

Expiring Memberships-4

JESSE DUBOIS

LEWIS ABLEIDINGER

DANIEL ADAMS

JONATHAN SCHOEN

Present Member Count- 56↓

EDITORS NOTE: THIS WILL BE A FEATURE EVERY MONTH SHOWING EVERYONE, WHO'S JOINING, WHO'S STAYING AND WHO'S GOING. IF YOUR NAME IS UP THERE I HOPE IT'S IN THE RENEWAL SECTION OR WILL BE NEXT MONTH.



Have a Great Holiday Season Everyone! And remember: triple-track 'round-the-tree layouts with hidden staging and dozens of lineside industries are the PERFECT touch for any holiday!"

Happy Holidays from Steven Goehring your resident columnist and pun expounder.

WEBSITE ARTICLE SWEEPSTAKES!

WE, MATTHEW AND MYSELF, ARE PLANNING TO HAVE A SMALL SWEEPSTAKES TO GET THE WEBSITE ACTIVITY LEVEL UP!

First place: 1 year free membership and \$75 to spend at their favorite hobby shop.

Second place: 1 year free membership and a \$25 to spend at their favorite hobby shop.

Third place: 1 year free membership.

* Only regular & international members (members under 21) may win these prizes, prize value is in US dollars.

To get in on the sweepstakes:

Register - lower left corner of the main page is a "Register" link, click that, fill out the information; this gets you 1 entry.

Submit Article - After you've registered & logged in, on the lower left in the "user menu" you'll see "submit content" - you type a short article about trains in your area, your model railroad and then click save. Your article will be reviewed by the web team and we'll publish the article! Don't think this is a long process, short articles are encouraged - I made http://www.tamr.org/index.php?option=com_content&task=view&id=25 in under 20 minutes. If you have pictures, currently we don't have "upload", please send them to webmaster@tamr.org with the subject of being the same as the article title. This is worth 5 entries.

Make a suggestion - have a good idea of how the forums should be divided? Want a new section added? Fix a write-up? Please, share your ideas, this is your website too. Worth 2 entries minimum.

Photos - submit your photo, with description to webmaster@tamr.org for 5 entries to the draw.

Draw will be conducted January 5th but get your entries in today! If you run into any problems, email webmaster@tamr.org

Thank you & good luck to you all - let's make this website good!

Dane Watson

Celebrating twenty years of attendance, the TAMR will once again be hosting a table at the Amherst Railway Society's BIG Railroad Hobby Show, in Springfield, MA. You know what that means, Winter Convention Time! Come join us January 25-29, 2008 for a weekend of trains, slide-shows, trains, pizza and did I mention the trains? Meet TAMR members Newton Vezina, Peter Maurath, Chris Burchett, and more, tour the second largest train show in the U.S., check out slide-shows, and just have fun hanging-out with other young railfans and hobbyists.

Calling all Crummies!

New for this year! All TAMR members who attend the convention and bring along a model caboose* will get free admission to the show (an \$8 savings!), your model will also be automatically entered in this year's caboose model contest for a chance at prizes. So get your "caboose" in gear, and attend this year's winter national with all your crummies, cabin cars, and caboose, you have.

We will once again be offering hotel accommodations at discounted rates to our members. For \$25 a night you can stay at the palatial Marriott's Residence Inn, Springfield, in the "TAMR suite" with plenty of room the spread out, an indoor pool, and free FULL breakfast every morning! To reserve your space contact the Convention Director at the info below.

For more information on anything above, please contact Newton Vezina, Convention Director at:
Newton Vezina,

Email: TAMRVideo@aol.com

*any scale is acceptable, you can try to bring a full size one if you want, though the TAMR is not responsible for trailer transport and storage, during the event.

THE TAMR IS A NON-PROFIT ORGANIZATION CREATED TO PROMOTE, FOSTER, AND ENCOURAGE YOUNG PERSONS IN THE HOBBY OF MODEL RAILROADING, THE ACTIVITY OF RAILFANNING, AND THE PRESERVATION OF THE HISTORY, SCIENCE AND TECHNOLOGY THEREOF. REPRINTING OF THE HOTBOX IS PROHIBITED WITHOUT THE EXPRESS WRITTEN CONSENT OF THE TEEN ASSOCIATION OF MODEL RAILROADERS.

MEMBERSHIP TO THE TAMR INCLUDES AN ELEVEN MONTH SUBSCRIPTION TO THE HOTBOX, THE ANNUAL DIRECTORY OF MEMBERS, QUARTERLY REGIONAL NEWSLETTERS AND AN ELECTION TO PARTICIPATE IN ALL TAMR EVENTS. THE AVAILABLE MEMBERSHIP CATEGORIES ARE AS FOLLOWS: REGULAR (UNDER 21)-\$15, ASSOCIATE (21 AND OVER)-\$20, INTERNATIONAL (OUTSIDE US)-\$18

TO BECOME A PART OF THE TAMR, OR TO RENEW, SEND YOUR INFORMATION TO:
TIM VERMANDE, TAMR PIVOT PIN,

OFFER GOOD WHY SUPPLIES LAST, NEGATIVE EQUITY APPLIED TO NEW LOAN BALANCE, MUST TAKE DELIVERY OF DEALER STOCK, SEE STORE FOR COMPLETE DETAILS. NO PURCHASE NECESSARY, VOID WHERE PROHIBITED. FOR A COMPLETE LIST OF RULES, REGULATIONS, AND THE BEST DARN RESTAURANTS IN ALLIANCE, OH SEND A SSAEBDR TO THE ABOVE ADDRESS. IF YOU ARE AT ALL UNSATISFIED WITH THIS HOTBOX, PLEASE RETURN UNUSED PORTION FOR A COMPLETE BLOW-OFF BY OUR STAFF. THANK YOU!

COMING SOON TO THE HOTBOX:

- The conclusion of Charles W's Railfanning in Indiana.
- Doug Engler's Syracuse Spots.

COMING SOON TO THE TAMR:

- Winter National Convention in Springfield, MA, January 25-28.

We're on the web!
www.tamr.org



"Putting the future of model railroading on the right track"

