

# THE HOTBOX



July 2007  
Issue # 408

ISBN:1093-622X

**NATIONAL CONVENTION ISSUE!**

**THE OFFICIAL PUBLICATION OF THE TEEN  
ASSOCIATION OF MODEL RAILROADERS  
This is a designated Hard Hat Area!**



**Editor**—Peter Maurath  
**Publisher**—Peter McGrath II  
**Contributing Columnists**—  
 Steven Goehring  
**Art Director**—Duh Vinci  
**Photographer**—Jay Vecee  
**Librarian**—Works diligently on  
 her fan.

## CONTRIBUTIONS

Send your check to my...oops, sorry, you mean that type of contribution. We here at The Hotbox are always in need of new material. Here are a few examples:

### FEATURE ARTICLES:

This is what we're always looking for. From a railfan trip, to your home layout's story, or your own story. Size can range from a paragraph to a full page. Pictures are always appreciated.

### COLUMNS:

Full of great tips on layout improvement? Got a million reasons EMD is better than GE? Start a monthly, or bi-monthly column. Size same as features.

### PHOTOS AND DRAWINGS:

Got a great photo collection you want to show-off? Got a notebook full of railroad cartoons, or layout logos? Send them to the Hotbox staff for consideration.

### SEND ALL SUBMISSIONS, OR HOTBOX QUESTIONS TO:

Peter Maurath

### OR EMAIL AT:

TAMRHotbox@sbcglobal.net

Meet Sammy spear and his orchestra!

## GET WIRED

Check out TAMR on the web at:

[www.TAMR.org](http://www.TAMR.org)

Or Join our online yahoo news group, by contacting:

[pivotpin@TAMR.org](mailto:pivotpin@TAMR.org)

(By joining you'll receive updates on TAMR news and events, plus be connected to dozens of other TAMR members. There's no cost to join this group, do it today!)

If you have a web site relating to trains or model railroading, why not join the TAMR web ring. It costs nothing, and provides a link for all TAMR members to find other TAMR sites. To join, send your e-mail address and web site URL to:

[pivotpin@tamr.org](mailto:pivotpin@tamr.org)



July 2007

Issue 408

# THE HOTBOX NATIONAL CONVENTION ISSUE

**ON THE COVER:** Austin Area Terminal Railroad GP40 #191 pauses at Burnet, Texas, this past January. Matthew Roberts, photo.

## FORM 19 A message from your editor in chief

Welcome to the annual Convention Issue. Everything you ever wanted, needed, or yearned about this summer's National Convention, *The Texas Eagle*, taking place at the end of this month. In here you will find an itinerary, description of events, hotel information, and a registration form. There may also be a few stray bits of article thrown randomly here or there, I forget what's here after awhile, so consider it an adventure!

I have some good news and then I have some better news. First the better news, David Swanson, a longtime member of our group and President of CIA International [In a nutshell they operate(d) most of the major train shows across the US, including Greenberg, WGH shows, and others], sent this group a check for \$500!! After seeing our financial statement in last month's directory, he wanted to help out and in doing so single-handedly saved this group from eminent financial collapse. Now

the good news. David also realized that money wasn't enough. If we don't want to see ourselves in another money crunch six month's from now, we need more members. To motivate us to grow, he's committed to donating \$15 for every new member we bring in, now till the end of the year!

I'm hoping this will light the fire under many of you, and make you see that this group is worth saving, and all it needs is enough people who care. Though if what I've mentioned so far isn't enough I've got a motivational program of my own to work along with what David is doing.

I'm calling it TAMRpoints. Since so many other companies are capitalizing on these "points/rewards" type programs, I thought I'd join in the insanity too. I'll have more details next month when our regular schedule returns.

Before I go lets welcome a few new faces in the

group!•  
Will Mansel

Scale/Layout: HO /Cross  
City RR

Christian Friedrich

Scale: 027 Lionel

Joel Flasschoen

Kyle Flasschoen

Jim Tuck



**The 2007 Teen Association  
of Model Railroaders  
National Convention**



# THE TEXAS EAGLE

## A Big "Howdy!" from the Convention Director!

Hey! I sure hope all my hard work pays off for those who come to the *Texas Eagle* 2007, held July 27<sup>th</sup> to 29<sup>th</sup>. My wish is this to be the symbol of a rising Southern Region. Come see what we have to offer. This is still my first year of being the Southern Region Representative, and unlike last year's convention, I don't think there's anyway to come close to covering Texas' railroads, even if we had a month! Come and join us, as there'll be layout tours of some of Austin's best model railroad layouts, railfanning along Uncle Pete and one high traffic shortline (the Austin Area Terminal Railroad), along with a ride behind an honorary steam engine, the Austin Steam Train Association's Alco RSD15 #442! It'd be nice to know if you are coming, so contact me by the following means:

Mail:

Phone:

Email: msrl23@suddenlink.net

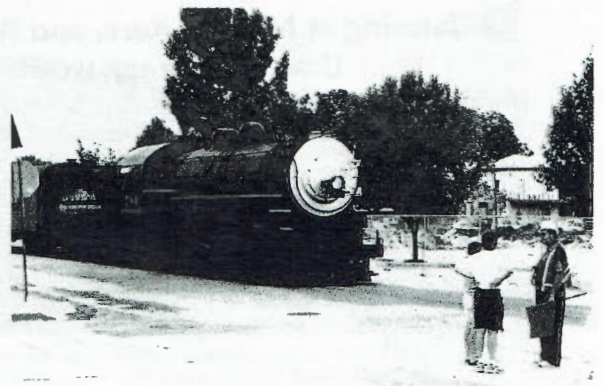
Sincerely,

Matthew Roberts  
2007 Convention Director  
Southern Region Representative

### The Railroad

The first railroad west of the Mississippi River, the Pacific Railway of Missouri (later the Missouri Pacific Railway) broke ground in 1851. It became the first railroad to serve Kansas City, in 1865, after the Civil War halted construction. In 1872, it was reorganized as the Missouri Pacific Railway. Jay Gould, expanding his railroad empire across the central United States, purchased a controlling share in the Missouri Pacific in 1879. By 1917 it merged with the St. Louis, Iron Mountain, and Southern, which provided a route south to Texas.

The MoP, later MoPac, was a huge class I railroad by the 1980s, having merged with the Texas & Pacific (T&P), Chicago & Eastern Illinois (C&EI), St. Louis, Brownsville, & Mexico (StLB&M), Kansas, Oklahoma, & Gulf (KO&G), Midland Valley (MV), Gulf Coast Lines (GCL), International Great Northern (IGN), New Orleans, Texas, & Mexico (NOT&M), and Missouri-Illinois (M-I), along with co-owning the Alton & Southern (A&S) with the Chicago & North Western (CNW). Its lines stretched from Chicago in the east, to Pueblo in the west, north to Omaha, and south to the Mexican border in Brownsville and Laredo, and Louisiana's Gulf coast. MoPac was a major hauler of grain, TOFC, coal, ore, autos, and dry goods. By the time it merged with Union Pacific on December 22, 1982, it operated over 1,500 locomotives, covering over 11,469 miles of track!



TIM VERMANDE, PHOTO.



## Itinerary



### FRIDAY, JULY 26<sup>TH</sup>, 2007

- 12 – 3 PM : “Meet n' Greet” at the Cedar Park Public Library, including clinics, maybe a small layout, introductions, etc.
- 3 – 6 PM : Railfanning at McNeil, Kerr, Round Rock.
- 6 – 8 PM : Layout tours in the Austin area.

### SATURDAY, JULY 27<sup>TH</sup>, 2007

- 10 AM – 1 PM : More layout tours, one layout operation session.
- 2 – 4 PM : Railfanning at the Austin Amtrak station, McNeil.
- 4 – 6 PM : Visit to the Collectible Caboose, my local hobby shop in Cedar Park.

### SUNDAY, JULY 28<sup>TH</sup>, 2007

- 10 AM – 2 PM : Ride on the Austin Steam Train Association's *Bertram Flyer* between Cedar Park and Bertram, Texas be hind ex-ATSF RSD15 #442.
- 3 – 6 PM : Railfanning to Taylor.
- 6:30 PM: Leave for home.

## Itinerary Details



## FRIDAY

-“**Meet n' Greet**”: This will be where members sign-in, pay the registration fee, attend some clinics, and meet each other.

-**Railfanning at McNeil, Kerr, and Round Rock**: Go south to McNeil, Texas, location of Austin White Lime, a major rail-served industry, a country store, and the Austin Area Terminal Railroad (AUAR) / Union Pacific interlocking. Kerr is the Georgetown Rail Road's inter change with the UP's Austin Subdivision, see mostly UP and BNSF rock trains exercising track-age rights on the GRR, through UP trains on the Austin Sub. . Round Rock is the location of a passing siding on the UP.

-**Layout tours**: Several tours of layouts in the Cedar Park, North Austin area, still being worked out.



## SATURDAY

**-Layout tours:** Central Austin, details being worked out.

**-Railfanning at Austin Amtrak Station and McNeil:** Austin's Amtrak station is located across the track of the Union Pacific's Austin Subdivision from downtown. Here you can catch the *Texas Eagle* along with several UP trains northbound as they start accelerating after crossing the Colorado River bridge and rounding a curve. We can then chase them up MoPac Blvd., where the railroad runs in-between and along the road for several miles most of the way up to McNeil.

**-Visit The Collectible Caboose:** A visit to The Collectible Caboose is always worth one's while, as it is always stocked with N, HO, O, and G-scales, along with various collectibles, not to mention it's pleasant staff and knowledgeable owner. There is an O-scale club (the Tinplate Trackers) set up next door. In the back of the shopping center is the Austin & Texas Central's yard, where they store the equipment for their *Flyer* trains.

## SUNDAY

**-Ride the *Bertram Flyer*:** The Austin Steam Train Association's *Bertram Flyer* is their shorter, summer version of their showcase train, the *Hill Country Flyer*, traveling to Bertram, Texas, where they have relocated an old T&NO depot with a working train-order lower-quadrant semaphore. At Bertram, the A&TC RSD15 #442 runs around the train to return to Cedar Park. Much scenery on the line, including crossing of the South San Gabriel River on a tall wooden trestle – metal girder combination bridge.

**-Railfanning to Taylor:** Railfanning all the way along the Austin Subdivision from Kerr through Round Rock, Hutto, and Frame Switch, all the way to Taylor. Location of a medium-size yard, several rail-served industries, and an interlocking between the UP's Austin (ex-MP) and Waco (ex-MKT) Subs.



TRINITY RAIL EXPRESS, ROLLS INTO FORT WORTH, TX, JUNE 2002. TIM VERMANDE, PHOTO.



A PAIR OF OLD ESPEE UNITS GIVE A PUSH ON THE BACK END OF A UP TRAIN NEAR SHERMAN, TX, NOVEMBER 2004. TIM VERMANDE, PHOTO.



**Local  
Hotels****ACCOMMODATIONS**

- Everyone attending the convention will have to seek room and board at one of the area hotels, I will rent out (a) room(s) for any members who cannot make other reservations.
- I cannot offer anyone room and board at my house, as I am in the process of moving from one house to another.

**Comfort Inn – Cedar Park**

300 E. Whitestone Blvd , Cedar Park, TX, US, 78613  
(512) 259-1810 <http://www.choicehotels.com>

**Holiday Inn Express – Cedar Park (NW Austin)**

1605 E. WHITESTONE BLVD., CEDAR PARK, TX 78613 UNITED STATES  
512-259-8200 <http://www.hiexpress.com>

**Best Western – Cedar Inn**

425 E Whitestone Boulevard, Cedar Park, Texas, 78613-9014, US  
512-259-7300 <http://www.bestwesterntexas.com>

**Extended Stay America – Lakeline Mall**

13858 N. US Hwy. 183, Austin, Texas, 78750  
512-258-3365 <http://www.extendedstayamerica.com>

**Registration  
Fee**

There will be a \$40.00 fee for registering members, to cover the costs of renting a room at the Extended Stay America – Lakeline Mall (for members), using a conference room at the Cedar Park Public Library, and paying for the tickets for the *Bertram Flyer* ride on Sunday.

**Registration  
Form**

**MUST BE FILLED OUT AND RETURNED, IF YOU PLAN TO ATTEND.**

**Fill out, tear-off along fold, and mail to:**

**Name:** \_\_\_\_\_

**Address:** \_\_\_\_\_

**City:** \_\_\_\_\_ **State:** \_\_\_\_\_ **Zip (or Postal) Code:** \_\_\_\_\_

**Country** (if outside US): \_\_\_\_\_

**Phone** (please include area code): \_\_\_\_\_ **Email:** \_\_\_\_\_

**How do you plan on arriving?** (circle one) **Car Bus Plane Train Skateboard**  
**Other** \_\_\_\_\_

**Will you need a ride from any station or terminal?** (circle one)  
**YES NO**

**If you are driving are you willing to carry other attendees in your vehicle?** (circle one)  
**YES NO**

**Scheduled date of arrival and departure for the convention:**

**Arrive on:** \_\_\_\_\_ **Depart on:** \_\_\_\_\_

**Please enclose a personal check or money order made out to Matthew Roberts for \$40 dollars (US) to cover the cost of meeting space, hotel accommodations, and other related convention fees. If not enclosed you will have to pay upon arrival at the convention.**

**Signature:** \_\_\_\_\_ **Date:** \_\_\_\_\_

**By signing this form, you hereby release the Teen Association of Model Railroaders, and the Roberts Family from any harm done at this convention by anybody or anything at any time during your attendance. Signing of this registration form is mandatory.**



THE TAMR IS A NON-PROFIT ORGANIZATION CREATED TO PROMOTE, FOSTER, AND ENCOURAGE YOUNG PERSONS IN THE HOBBY OF MODEL RAILROADING, THE ACTIVITY OF RAILFANNING, AND THE PRESERVATION OF THE HISTORY, SCIENCE AND TECHNOLOGY THEREOF. REPRINTING OF THE HOTBOX IS PROHIBITED WITHOUT THE EXPRESS WRITTEN CONSENT OF THE TEEN ASSOCIATION OF MODEL RAILROADERS.

MEMBERSHIP TO THE TAMR INCLUDES AN ELEVEN MONTH SUBSCRIPTION TO THE HOTBOX, THE ANNUAL DIRECTORY OF MEMBERS, QUARTERLY REGIONAL NEWSLETTERS AND AN ELECTION TO PARTICIPATE IN ALL TAMR EVENTS. THE AVAILABLE MEMBERSHIP CATEGORIES ARE AS FOLLOWS: REGULAR (UNDER 21)-\$15, ASSOCIATE (21 AND OVER)-\$20, INTERNATIONAL (OUTSIDE US)-\$18

TO BECOME A PART OF THE TAMR, OR TO RENEW, SEND YOUR INFORMATION TO:  
TIM VERMANDE, TAMR PIVOT PIN,

OFFER GOOD WHY SUPPLIES LAST, NEGATIVE EQUITY APPLIED TO NEW LOAN BALANCE, MUST TAKE DELIVERY OF DEALER STOCK, SEE STORE FOR COMPLETE DETAILS. NO PURCHASE NECESSARY, VOID WHERE PROHIBITED. FOR A COMPLETE LIST OF RULES, REGULATIONS, AND THE BEST DARN RESTAURANTS IN STEUBENVILLE, OH SEND A SSAEBDR TO THE ABOVE ADDRESS. IF YOU ARE AT ALL UNSATISFIED WITH THIS HOTBOX, PLEASE RETURN UNUSED PORTION FOR A COMPLETE BLOW-OFF BY OUR STAFF. THANK YOU!

### COMING SOON TO THE HOTBOX:

- Railroading in the movies.
- An Australian visits Pennsy country!

### COMING SOON TO THE TAMR:

- Marked your calendar for Springfield yet?
- Summer National convention in TX, July 26th-28th.

We're on the web!  
www.tamr.org



"Putting the future of model railroading on the right track"

