

THE HOTBOX

May 2006
Issue # 394

ISBN:1093-622X

**THE OFFICIAL PUBLICATION OF THE TEEN
ASSOCIATION OF MODEL RAILROADERS**

Made of only the finest home-grown ingredients

Editor—Peter Maurath
Publisher—Peter Maurath
Contributing Columnists—
 Jonathan Schoen
 Steven Goehring
Art Director—Duh Vinci
Photographer—Jay Vecce
Librarian—Gets her spring
 bulbs in early.

CONTRIBUTIONS

Send your check to my...oops, sorry, you mean that type of contribution. We here at The Hotbox are always in need of new material. Here are a few examples:

FEATURE ARTICLES:

This is what we're always looking for. From a railfan trip, to your home layout's story, or your own story. Size can range from a paragraph to a full page. Pictures are always appreciated. New officers are too

COLUMNS:

Full of great tips on layout improvement? Got a million reasons EMD is better than FM? Start a monthly, or bi-monthly column.. Size same as features.

PHOTOS AND DRAWINGS:

Got a great photo collection you want to show-off? Got a notebook full of railroad cartoons, or layout logos? Send them to the Hotbox staff for consideration.

SEND ALL SUBMISSIONS, OR HOTBOX QUESTIONS TO:

Peter Maurath

OR EMAIL AT:

TAMRHotbox@sbcglobal.net
 I'm a Q-tip what are you!

GET WIRED

Check out TAMR on the web at: www.TAMR.org
 Or join our online yahoo news group, by contacting: pivotpin@TAMR.org
 (By joining you'll receive updates on TAMR news and events, plus be connected to dozens of other TAMR members. There's no cost to join this group, do it today!)

If you have a web site relating to trains or model railroading, why not join the TAMR web ring. It costs nothing, and provides a link for all TAMR members to find other TAMR sites. To join, send your e-mail address and web site URL to:

pivotpin@tamr.org



TEEN ASSOCIATION OF MODEL RAILROADERS

May 2006

Issue 394

THE HOTBOX

ON THE COVER: Rio Grande Southern Galloping Goose #5 crosses Cascade Trestle on the Cumbres & Toltec Scenic Railroad on June 9th, 2005. Photo: Ben Neal (more info on pg.6)

FORM 19 A message from your editor in chief

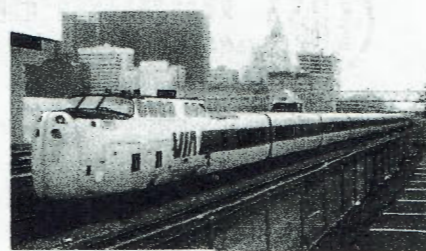
Welcome to May, Hotbox style! If your reading this, then that means you had enough of a sense of humor to forgive my silliness in last month's issue and stay with me. Just to make sure everyone is on the same page (he he, still got a little left) the April Fools issue did not end with just the cover, no, no that would have been too easy. I ramped-up the insanity last month by making the *entire* issue a gag. There was no sixteen page *Hotbox*, no MRN \$1000 contest, no membership hike. I simply changed a few page numbers around, added some disconnected paragraphs and you know the rest. For those who saw through my web of clever, and amusing deception, my hat's off to ya! For those who sent worried emails, don't feel bad, it happens to the best of us. Now then with all that out of the way, on to the serious issues of a very serious newsletter.

Here's a contest that is for real, and should be in your issue, unless the post office shreds it enroute. The annual TAMR Photo Contest. For the last two years I along with the fine folks at

Model Railroad News (MRN) have been hosting a photo contest to showcase the best, and brightest teen railfan photographers. Once again this year, we will be offering a grand-prize of \$50 to the winner of the contest, as well as featuring them, and four runners-up, in here and in the pages of MRN. For all the info, check out page five, and get your entry in today. **NOTE:** *There have been a few rule changes so read them carefully!*

Next, with the weather warming-up it'll soon be time to think of vacation plans. The NY/NJ members are hosting this years Summer National Convention, The Blue Comet, in Edison, NJ, this August. So why not take a couple days, and join them. It should be a lot of fun. Check out page six for more information, and look for the Convention Issue of The Hotbox coming this July.

Finally, as always the Hotbox cannot function without the support of it's members namely article, and photo submissions, which are al-



Tim Vermande, photo.

ways needed (especially high quality cover shots). So don't be afraid, even if it's a one shot article, the worst that can happen is I use it.

A bid you farewell with a welcome to this latest crop of new members! ●

Frank R. Coye

Layout: Delaware Oswego RR
 Scale: O
 Eqp: O scale equipment, F7

Kyle Shannon

Layout: 1940's Southern Ry
 Scale: HO

Jamie Riegner

Scale: HO



WELCOME TO AMERICAS SOON TO BE FASTEST GROWING ARTICLE SENSATION, *RAILFAN RANTINGS*. IN THIS COLUMN I POSE A QUESTION TO OUR MEMBERS VIA THE TAMR ONLINE GROUP AT YAHOO, AND HOPEFULLY COME AWAY WITH SOME INSIGHTFUL, AMUSING AND POSSIBLY SILLY ANSWERS. THIS MONTH'S QUESTION:



what is the best piece of railroad memorabilia you've found?



Dave Cenci, Peck, MI- "While walking the old Huron and Eastern RR grade in Sandusky a few years ago, I came across a pile of joint bars!!!! In more recent times, I found a piece of rail in the same town! So now I have a piece of rail, and 2 joint bars."



Ben Hawken, Shingle Springs, CA- "I have some spikes and some lava rock from black butte from the remains of the SP empire!"



Matt Martin, Fairport, NY- "When my dad and I were in Arizona for a trip we found a full Santa Fe Poppy Pattern Bowl laying in the dirt at Seligman, Arizona, along with a few date nails, & other various pieces of ATSF Dining Car China."



Jonathan Schoen, Simi Valley, CA- "I haven't found much, but I did find 6 or 7 railroad spikes lying on the ground while doing some local fanning once. I treasure it, especially since the famed railroad spike itself will soon be gone from all Class Ones. *tear* *sniff*"



Jeff Wondolleck, Lafayette, CA- "The first time I visited Tehachapi Loop in February 1995, the conductor from a SP train

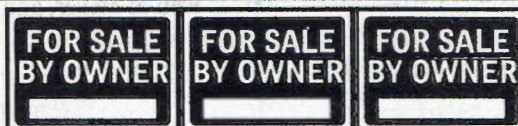


threw out train orders from a previous train. The orders were from a unit coal train from a few days earlier."

Steven Goehring, Nazareth, PA- "The greatest piece of railroad memorabilia that I ever got is a book, titled Wellsville, Addison & Galetton Railroad- "Sole Leather Line" by Edward A. Lewis. Get this- The WAG was only a 93 mile slice of railroad in rural Pennsylvania at its peak. But my dad found this book on the Internet at a book dealer in the UK! What it was doing over there, so far from any of my fellow WAG-fans is beyond me."

Willie Roberge, Wareham, MA- "Well My best piece of "Normal" railroadiana is a lamp from the top of a switch stand. It is authentic (New Haven I think, I'll have to ask the guy I bought it from) He mounted a regular lamp/light bulb socket in it so it still lights up! My other piece of railroad memorabilia/railroadiana is my authentic 100+ year old wooden Velocipede!!!!"

WANT TO JOIN IN THE RANTING? THEN JOIN THE TAMR ONLINE GROUP AT YAHOO GROUPS.COM. SEE PAGE TWO FOR MORE INFO.



HOn3 modelers in the TAMR? I'm getting rid of all my old narrow gauge stuff, including rolling stock (no operating locos!), track, and structures. I'll give a good deal to somebody in the group who is trying to get into that scale. Also, I've got a box of HO standard-gauge rolling stock and other odds and ends that I'll sell cheap. Email me if you're interested:
o_bye@hotmail.com

Ole Bye
Chester, VT

IT WAS 1998...

By: Joe Bohannon

I'm not exactly sure when I joined the TAMR, but none the less, 1998 was the year I really remember becoming a part of the organization. Long before everyone had a cell phone. Long before there was Myspace. Long before "September 11th". Before the "Millennium Bug". Before the ES44AC. Before Acela. Before the Conrail split. Even before DCC gained widespread use. It was the year 1998.

When I first joined the TAMR, I was fortunate enough to have a Regional representative by the name of Matt Silcox who cared about new members and wrote letters to those in his region. This early camaraderie was wonderful and spurred the desire to host a mini-convention one weekend in my hometown of Bakersfield, CA. This convention that I hosted allowed me the opportunity to meet a couple other members in California, one being my good friend to this day, Jeff Wondolleck and Ryan Steck-Bayat. The convention was also attended by Matt Silcox and my best friend Adam Otten. This early interaction with fellow members helped to cement my enthusiasm for the organization. It was at this time that with the help of Matt Silcox, I decided to run for TAMR President in the upcoming election.

Being elected president was exciting for me, I was only 16, and I felt welcomed and appreciated by the members. Even though Matt and I had a falling out, I still had good thoughts of our time as friends. Through the next year I quickly built friendships with those members in other parts of the country, people like

Doug Engler, Newton Vezina, Danny Schueth and Hans Raab. The TAMR was a well rounded group of roughly 300 members stretching coast to coast.

I attended my first National Convention in 1999, *The Texas Eagle*. Ritchie Roesch was the convention host based out of Plano, TX. It was at this convention that I met many of the people I considered friends for the first time in person. Some of the people I met there planted the seed in the friendship that would follow, people like Tim Vermande, Pete Maurath,

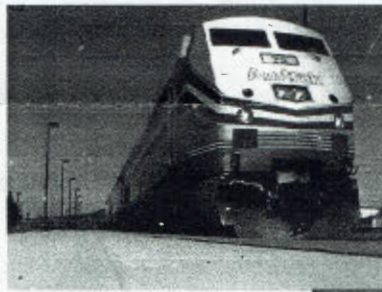
Scott Willet, Andrew Sabens, Andrew Mattarazzo and Jim Spavins. We were treated to all sorts of wonderful activi-

members such as Anthony Person, Ross McKnight and Micah Thompson.

2001 started with my arrival at the famous West Springfield show. I really enjoyed the hospitality of those members that helped my go. I enjoyed the members I got to meet in what I'd consider the most active area for membership in the TAMR. What the membership has accomplished there is amazing. Meeting people like Chris Burchett and David Hadley made for a well rounded trip. The National Convention was held in Ohio that year, hosted by Chris Burchett. Jeff Wondolleck and I drove to Ohio, and we are glad we made that trip. Chris had terrific activities planned for us, Jeff and I got to see some interesting railroading. Lots of diamonds! I still remember being greeted the night we arrived with a freakish lightning storm... Operating on the HO scale *Grafton & Greenbrier* was another wonderful treat.

I ended up graduating from High School in 2000, so by the end of 2001 I had already started to move away from the group. It was never my intention to lose touch with the group, but life happens. I tried to keep in touch with those I con-

sidered good friends, and to this day I consider many still friends. Jeff Wondolleck has always been a best friend to me, and even acted as a groomsman in my wedding. I often wonder where those members are now that I once kept in touch with, I just hope that they still have pleasant memories of the TAMR as I do. If it wasn't for joining the TAMR in 1998, I have no idea where I'd be today. Thank you for the memories. ●



ties, but operating David Burrow's Cat Mountain and Santa Fe will always stand out in my memory.

The year 2000 saw many changes for the organization. I was able to secure the TAMR.org website, and communications between members online really took off. There was a popular, coveted 'Hotbox' cover photo in which crowned an amazing, timely published newsletter by the One Mile Division. This was also the year of Newton's cross country drive that brought many members to the west coast for the "Daylight" convention. It was my honor to host the convention, but it was a bigger honor to meet so many wonderful



PHOTO'S BY AUTHOR

EVERY NEWS OF THE TMR UNIT!

THE 2006 TAMR PHOTO CONTEST!



It's back! If you're a TAMR member between the ages of 10 and 19 who thinks they're the next O Winston Link, enter the TAMR Photo Contest. The best five shutterbugs will have their pictures featured in *Model Railroad News*, but that's not all! The grand prize winner receives fifty dollars they can spend on whatever they want, which for you will probably be more film.

HOW TO ENTER:

SEND YOUR DIGITAL OR SCANNED PRINT OR SLIDE (JPEGS PLEASE) TO: TAMRHOTBOX@SBCGLOBAL.NET
(TYPE "PHOTO CONTEST" ON THE SUBJECT LINE)
OR SNAIL MAIL YOUR PRINT OR SLIDE TO:
TAMR PHOTO CONTEST,

All entries will be placed on the TAMR yahoo groups website. Once compiled, members will be allowed to go to the site and vote for their favorite five. Once voting is closed, several judges will tally up the votes and make the final decisions on the five winners. The winners will first be showcased here, than in an upcoming issue of *Model Railroad News*. The grand prize winner receiving their \$50 prize then.

RULES:

- YOU MUST BE A VALID TAMR MEMBER BETWEEN THE AGES OF 10 AND 19.
- (NEW) ONE ENTRY ONLY PER MEMBER!
- YOUR ENTRY MUST BE YOURS, TAKEN BY YOU!
- YOUR ENTRY CAN BE NO MORE THAN TWO YEARS OLD.
- YOU MUST INCLUDE A COMPLETE CAPTION WITH DATE AND LOCATION.
- NO ENTRIES WILL BE ACCEPTED THAT HAVE WON AT A PREVIOUS NATIONAL CONTEST (I.E. WEST SPRINGFIELD, OR THIS EVENT)
- NO DIGITALLY ALTERED PHOTOGRAPHS
- ANY WINNER MUST BE PREPARED TO RESUBMIT THEIR ENTRY TO MRN AS A JPEG AT 1024x680
- INCLUDE POSTAGE IF YOU WANT YOUR SNAIL-MAIL MATERIAL RETURNED.
- ALL MAILED MATERIAL IS SENT AT YOUR OWN RISK, THE HOTBOX IS NOT RESPONSIBLE FOR LOST MATERIAL.
- DECISIONS OF THE JUDGES ARE FINAL.

TIMELINE:

- ENTRIES WILL BE ACCEPTED NOW TILL MAY 26TH.
- VOTING ON YOUR FAVORITE FIVE BEGINS JUNE 5TH AT: [HTTP://GROUPS.YAHOO.COM/GROUP/TAMR](http://groups.yahoo.com/group/TAMR) (CLICK ON PHOTOS). THIS IS IN THE PHOTO SECTION, NOT FILES AND YOU MUST BE A MEMBER OF THE ONLINE GROUP.
- VOTING ENDS JUNE 19TH. WINNERS WILL BE ANNOUNCED AND SHOWN IN THE JULY HOTBOX, AND THE SEPTEMBER MRN.



The Top 7

By: Peter Maurath

"From the Home office in Cleveland, OH, it's tonight's Top Seven list!"

Top Seven signs you're a bad railroad photographer.

#7. You hang out at the airport.

#6. You can't get the blank slides to fit in the camera.

#5. You wish you could go back in time so you could shoot in black & white.

#4. Your camera of choice, Polaroid Instant.

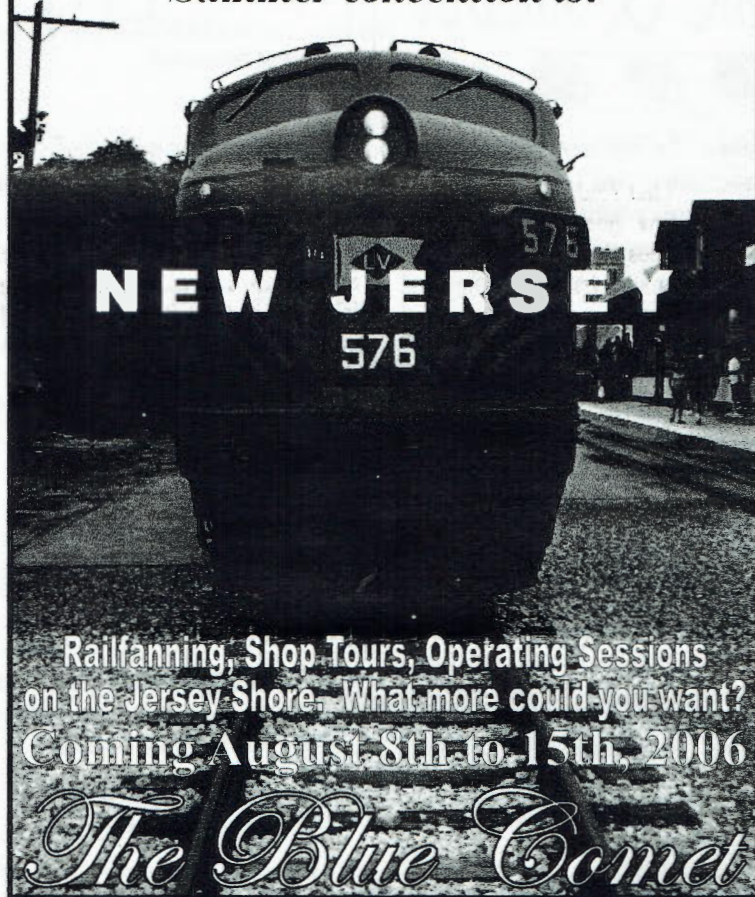
#3. There's a giant pink blimp in every one of your shots.

#2. All of your friends are suddenly ill every time you host a slide-show.

And the number one sign you're a bad railroad photographer...

Union Pacific won't even sue you.

*Wondering where this years
Summer convention is?*



*Railfanning, Shop Tours, Operating Sessions
on the Jersey Shore. What more could you want?
Coming August 8th to 15th, 2006*

The Blue Comet

Need Info? Contact Erik Romatowski at:

Email: eromatowski@yahoo.com

Phone:

Mail:

THE HOTBOX FUNNY NAME OF THE MONTH

PULLED AT RANDOM FROM THE NORTHERN REGION
TELEPHONE DIRECTORY OF THE PENN CENTRAL TELE-
CENTRAL PHONE NETWORK, "THERE IS ALWAYS TIME
FOR COURTESY."

W.T. ARZOOMAN

THIS CONCLUDES THE HOTBOX FUNNY NAME OF THE
MONTH, PROVIDED BY THE PENN CENTRAL, TELECENTRAL
PHONE NETWORK. "WHEN YOU ANSWER THE
PHONE YOU ARE THE COMPANY."

Galloping Geese ...a quick review.

By: Ben Neal

On the cover this month we see Rio Grande Southern Galloping Goose #5 crossing Cascade Trestle on the Cumbres & Toltec Scenic Railroad. The Cumbres & Toltec is a scenic railroad that operates a 64 mile segment of the former Denver & Rio Grande Western 3 foot gauge lines, between Chama, New Mexico and Antonito, Colorado.

Volumes have been written on the RGS and its Geese, but I'll give a basic description. The Geese were built for the same reason that Doodlebugs and RDCs were, to operate passenger runs that were not economic enough to warrant running a full train with locomotive. The first was built from a Buick, but the rest were built from Pierce-Arrow Limousines. While the first, second, and third Geese had two trucks, the rest had three. After WW2, the bodies of Geese 3, 4, and 5 were replaced with Wayne bus bodies. Those, and number 7, were re-built with engines from US Army M35. By the 1950s, tourists had discovered the RGS. The boxes on the back of 3, 4, and 5 had windows cut into the sides, and benches added. When the railroad went out of business, the 3 truck geese were modified by the scrappers. The boxes were removed, leaving a flat bed for pieces of rail. After the scrapping, all surviving Geese went to museums. 2, 6, and 7 are at the Colorado Railroad Museum. 5 is in Dolores, Colorado unless it is making an appearance on the Cumbres & Toltec or Durango 7 Silverton. 3 is at Knott's Berry Farm in Buena Park, California, and 4 is in Telluride, Colorado. Number 1 was scrapped in 1933, but a replica of it exists in Ridgeway, Colorado, unless it is running on the Durango & Silverton.●

Trains to Nowhere

BY: STEVEN GOEHRING

Making Better Trees with Hairspray

Reporting for the TAMR Hotbox, this is Steven Goehring, live from Davis Station, Pennsylvania in densely wooded Tioga County. Since I can study a great variety of trees up close and personal here, I'll take the opportunity to update my methods of tree making. The idea's I'll describe work incredibly well in N scale, just as well or better in HO, and perhaps, with some upsizing, they would work in O, also.

There are a few basic idea's that I should take back/add to my earlier article on basic tree making. There are three basic rules that one should keep in mind when making trees: **-1-** Use a foliage that is lighter than you think you will need. This gives the effect of light hitting the tree. If necessary, accent shadows with dark turf. **-2-** Use a foliage that is a bit finer than you think. Coarse Turf, a Woodland Scenics product, yields great results, even on trees that are supposed to be very dense. Remember, trees are mostly air. **-3-** **USE HAIRSPRAY!** Buying a can of extra-long hold hairspray will be one of the best purchases you ever make in scenery products. The hairspray holds better than Woodland Scenics Scenic

Cement and doesn't stink like most glues do. Also, it sets faster. It can be used to stock foliage onto the armature in the first place as well as to seal the foliage in place.

That said, I'll give you a few good "recipes" for trees that take advantage

of the perks of using hairspray for tree making.

Hemlock trees are an excellent addition to any northern U.S. layout, especially if there is a furniture factory on the railroad. Demand for Hemlock is often the driving force behind a logging railroad. To make an accurate Hemlock, (based on the one I'm staring at now,) you should use a very straight tree armature of any size, and preferably, with A LOT of limbs. If you're in a small scale, something like Fine-Leaf Foliage

different in shape from any other trees.

Austrian Pines were a type of tree that I mentioned in an earlier article, but they are much easier to make with hairspray. Use rather small armatures, about four to six times the height of a scale person. Apply Medium or Dark Green Fine-Leaf Foliage to the tree with hairspray. Try to get the boughs to have a rounded-off shape, reaching its widest point one third of the way up the trunk. Seal with more hairspray when finished, and don't be afraid to add a few dead limbs, or even an entire dead tree. It adds realism to the scene.

Fruit trees, regardless of type, are far easier to model with hairspray. Make an appropriate deciduous tree first, (I recommend Blended Turf stuck onto Dark Green Lichen, which you would then attach, in small amounts, to the tree.) Once you make the tree and seal it with hairspray, add some fruit or some blossoms to the foliage while the

spray is still wet. Both fruit and flowers are available from Woodland Scenics. Plant an orchard and enjoy the fruits* of your labor!



THE BIRCH ON THE LEFT WAS MADE WITH HAIRSPRAY, AND THE ONE ON THE RIGHT WITH PLASTIC CEMENT AND SCENIC CEMENT. NOTICE THE PUFFY LOOK AND LACK OF VISIBLE LIMBS ON THE TREE ON THE RIGHT. THE HAIR SPRAYED TREE IS MUCH MORE REALISTIC. PHOTO BY AUTHOR

from Woodland Scenics would work. Coarse Turf could be applied in a fan-like, flat shape to the limbs. Light Green is the best color, but depending on how you are lighting your layout, Medium Green may be a good color to use. If you want a springtime touch, add some Fine or even Coarse Turf to the tips of the boughs to create the appearance of new growth. Hemlocks are

I can't stress it enough: **HAIRSPRAY = GOOD TREES!** You can get trees to be thinner and more realistic with hairspray, since it doesn't make the foliage clump up. Sealing the trees with hairspray causes much less foliage to fall off (I've found that Scenic Cement causes a lot of foliage

to drop off the tree when I hang it up to dry.) Get a can or two of EXTRA-HOLD HAIRSPRAY today, and try making a tree or two or three or thirty. You'll be in for a real treat* (did Spell check miss my misspelling of treat?)•

Editor's Note: Last month I failed to include the proper back issue Steven referred too on Tips For Making Better Trees. It was the December 05' issue.

THE TAMR IS A NON-PROFIT ORGANIZATION CREATED TO PROMOTE, FOSTER, AND ENCOURAGE YOUNG PERSONS IN THE HOBBY OF MODEL RAILROADING, THE ACTIVITY OF RAILFANNING, AND THE PRESERVATION OF THE HISTORY, SCIENCE AND TECHNOLOGY THEREOF. REPRINTING OF THE HOTBOX IS PROHIBITED WITHOUT THE EXPRESS WRITTEN CONSENT OF THE TEEN ASSOCIATION OF MODEL RAILROADERS.

MEMBERSHIP TO THE TAMR INCLUDES AN ELEVEN MONTH SUBSCRIPTION TO THE HOTBOX, THE ANNUAL DIRECTORY OF MEMBERS, QUARTERLY REGIONAL NEWSLETTERS AND AN ELECTION TO PARTICIPATE IN ALL TAMR EVENTS. THE AVAILABLE MEMBERSHIP CATEGORIES ARE AS FOLLOWS: REGULAR (UNDER 21)-\$15, ASSOCIATE (21 AND OVER)-\$20, INTERNATIONAL (OUTSIDE US)-\$18

TO BECOME A PART OF THE TAMR, OR TO RENEW, SEND YOUR INFORMATION TO:
TIM VERMANDE, TAMR PIVOT PIN,

OFFER GOOD WHY SUPPLIES LAST, NEGATIVE EQUITY APPLIED TO NEW LOAN BALANCE, MUST TAKE DELIVERY OF DEALER STOCK, SEE STORE FOR COMPLETE DETAILS. NO PURCHASE NECESSARY, VOID WHERE PROHIBITED. FOR A COMPLETE LIST OF RULES, REGULATIONS, AND THE BEST DARN RESTAURANTS IN WHEELING, WV SEND A SSAEBDR TO THE ABOVE ADDRESS. IF YOU ARE AT ALL UNSATISFIED WITH THIS HOTBOX, PLEASE RETURN UNUSED PORTION FOR A COMPLETE SLOW-OFF BY OUR STAFF. THANK YOU!

COMING SOON TO THE HOTBOX:

- Article; translated into English!
- Railroading Over There returns.

COMING SOON TO THE TAMR:

- Summer convention will be here soon!
- The month of June.

We're on the web!
www.tamr.org



Teen Association Of Model Railroaders
"Putting the future of model railroading on the right track"

27 APR 2006 PM 3 L

CLEVELAND OH 441

