

# THE HOTBOX



September 2003

ISBN: 1093-622X

Issue #363

**THE OFFICIAL PUBLICATION OF THE TEEN  
ASSOCIATION OF MODEL RAILROADERS**

Proud to be ISO 9003 Certified!





# THE HOTBOX

Septmeber 2003, Issue #363

**Editor/Publisher**-Peter Maurath  
**Executive Editor**- Mrs. Peter F. Maurath  
**Managing Editor**-Peter F. Maurath II  
**Senior Editor**-Peter F. Maurath III  
**Associate Editor**- Sr. Peter Maurath Esq. IV  
**Art Director**-Lt. Peter Maurath  
**Graphic Designer**-Hon. Peter F. Maurath  
**Technical Illustrator**-Bo the TAMR Wonder Dog  
**Photographer**- O Winston Maurath  
**Librarian**-“Usually found in a large building called a library.”

## CONTRIBUTIONS

Send your check or money order to my ,... oops sorry,.. you mean that type of contribution. We here at the Hotbox are always in need of new material. Here are a few examples:

### Feature Articles:

This is what we're always looking for. From a railfan trip, to your home layout's story, or your own story. Size can range from a paragraph to a full page. Pictures are always appreciated.

### Columns:

Full of great tips on layout improvement? Got a million reasons Alco is better than EMD? Start a monthly, or bi-monthly column. Size same as features.

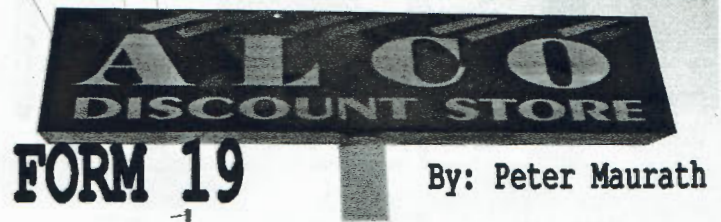
### Photos and Drawings:

Got a great photo collection you want to show off? Got a notebook full of rr cartoons, or unique logos, send them to the HB staff for consideration.

**Send all submissions, or Hotbox questions to:**  
Peter Maurath

**Or email at:**  
[TAMRHotbox@aol.com](mailto:TAMRHotbox@aol.com)

**ON THE COVER:** NJT new ALP-46 #4610 seen on display during the 2002 NJT Hoboken Festival At Hoboken terminal in Hoboken NJ. Photo By: Erik Romatoski



Well, I made it through that first issue with nary a complaint. Thank you all out there for the positive feedback. If you are at all unhappy with the present state of the Hotbox feel free to read the disclaimer on the back of this issue for what can be done to better serve you. That aside, I'd like to take a moment to thank all the members out there who pulled together in this HB crisis by sending material. Lewis Abeildinger, Chris Burchett, Andy Inserra, Erik Romatoski, Doug Engler, Josh Trower, and Charles Warcinsky (Funny I don't see *your* name there. What's the deal? Get off your duff and help out, otherwise what are you spending \$15 bucks for?) It's been a big help and will keep the article files flush with material. I only have one request of you and any others planning on sending material: more model railroad stuff. I'd like plenty of variety in this publication, and want to balance out the railfan reports with layouts. Model railroad material can range from tips, your layout's story, or product reviews (**I will no longer be accepting product announcements**), and so on. This does not mean delete your 1:1 scale submissions. I can always use material , I just may not use it right away.

It occurred to me last issue, that following our election last year, results were never posted for the whole group (this may have something to do with the lack of a HB, still investigating). Without further ado I present your 2003 TAMR Board of Directors:

**President:** Chris Burchett  
**Vice President:** Charles Warczinsky  
**Treasurer (temp.):** Nicholas Wilson  
 (anyone interested in becoming treasurer should contact Nick at [TAMRNERep@yahoo.com](mailto:TAMRNERep@yahoo.com), or address on back)  
**Hotbox Editor:** Peter Maurath  
**Auditor:** Erik Romatoski  
**Pivot Pin:** Tim Vermande  
**Promotions Manager:** Andy Inserra  
**Webmaster:** Nick Wilson  
**NER Rep:** Nick Wilson  
**Central Region Rep:** David Cenci  
**Southern Region Rep:** -position open-  
**Western Region Rep:** -position open-  
**International Region Rep:** -position open-  
 (anyone interested in appointments to the above postions should contact Chris Burchett at [president@tamr.org](mailto:president@tamr.org))





BY: TIM VERMANDE

Despite the growth of digital cameras, film still sees a lot of use. You only need to look at any photo magazine to tell that; they are always running tests and comparisons. While there are real differences in film, it sometimes reminds me of the days before audio CD's. There were endless discussions about which cartridge, arm, stylus, turntable, and so on worked better on records. To a few with the time (and money) to pursue that sort of thing, there were said to be better results. It is the belief of the POASSB crew that, although you can save a lot of money by talking endlessly about photography rather than practicing it, such behavior defeats the purpose of owning a camera. So we will begin a venture into film.

There are two big divisions when we start talking about film: slides and prints. When slide film is processed, it is developed and put into a cardboard or plastic mount (typically), and returned to you. If you look at the slide, it is basically a small representation of the scene you photographed, with all the colors. When print film is processed, it is developed into a negative. If you look at a negative, the colors are strange, because they are the reverse of what you saw. The negative is then printed onto paper (a print, which looks like what you saw), and both the negative and print are returned to you.

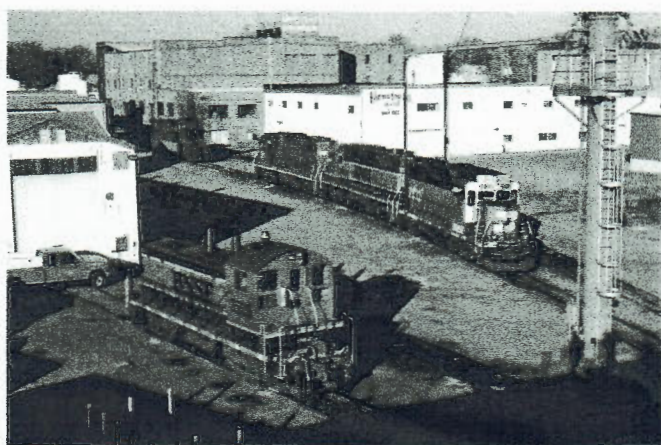
One way to approach the choice of slides or prints is to think about showing your photos. A slide looks best when projected, and that means setting up a projector, screen, finding a good room, and so on. At the least it means finding a light and a magnifier. A print can be put in an album or envelope and passed around to others. Since you are not showing the negative, it can remain safe, away from spills and whatever else.

To be continued...

#### HOTBOX DEFINITION OF THE MONTH:

##### Turn-table

\'tern-'tabel\ V : what you do when your table faces the wrong way.



Sioux Falls, SD BNSF action, courtesy:Lewis Abeidinger

- "From our studio's in Penn Center Plaza, NY, this is Hotbox News, at 6..."

# Hotbox News

When news breaks, we fix it!



From our world desk, Andy Inserra...

**Norway** - Franchising will begin in 2004 for the passenger lines. NSB, the national railway, wants to also transfer trains like the Oslo airport train to private owners. Connex, an operator in other parts of Europe and the UK has been in talks already with the folks at NSB.

**China** - The Shanghai Maglev is getting underway with the cars from Transrapid in Germany. It will run 30 km from the city to the airport.

**UK, Holland**- More international units left GM-London in June. Eight JT42CWR's left via CN for forwarding to Europe covered in tarps on flatcars for loading on the ship "JUMBO VISION" in Halifax, Nova Scotia. Five of the locomotives were painted in GB Railfreight and three in Porterbrook Leasing livery. The ship docked in Newport England on June 21st, 2002, to unload GB 66708-66712, and continued to Rotterdam, Holland to unload PD11-PB13.

**Canada** - The first train with the brand new **Cartier AC4400CW's** left Port Cartier, Quebec with General Electric locomotives 27, 24 and 21 and 151 cars. They plan to test and run each unit in the lead position. **The Esquimalt and Nanaimo Railway** will now continue operations to September 30th, including both the **VIA RDC** service and some **RailAmerica** switching. There is a possibility of many local concerns pooling resources to eventually take over all Vancouver Island trackage to continue the operation of passenger and freight service. **Southern Railway of British Columbia SD38-2's** 382, 383, and 384 have returned to the SRY from the IMRL recently and are working in Vancouver. **Omnitrax's** use of ex-SP SD45E's in Canada is ending with the return of **Huron Central SD45E 458**, to the **Buffalo & Pittsburgh** and **HCRY SD45 462** to sister road **Illinois & Midland**. The remaining two SD45E's **QGRY** (Quebec- Gatineau) 460 and 461 are stored in Montreal (Outremont Yard) and will likely soon go back to the US. **RailAmerica** has sold **Mackenzie Northern GP9u 1754** to the **Athabasca Northern Railway**. It will be renumbered 4007.



For the NJT Update, Erik Romatoski:

This time, we cover some of the Hoboken division of NJT:  
**Montclair-Boonton Line:** This Line travels between Denville NJ where it connects with the Morristown Line and Montclair NJ where it also connects with the Morristown Line. This line is made of the former Boonton Line and Montclair Branch of the Morristown line. These two lines were connected via the "Montclair Connection" of which was a stretch of track approximately 1.1 miles long completed in late September of 2002. Revenue trains started to use this line on September 29, 2002. With the opening of this track, the former east end of the Boonton line has been abandoned. This portion is about 9 miles long and has three stations (Glen Ridge, Rowe St., and Arlington) and also included two draw bridges (DB and WR Draw). It is Unclear as of yet what will happen to this portion of the line, as the NY&GL (New York And Greenwood Lake RR) would like to operate passenger trains over the line, although NJT is against letting them have access Hoboken Terminal. Many people also feel that the NY&GL should concentrate on gaining some freight business, instead of going into passenger service. This line also has MidTown Direct service. **More on this and other developing stories at 11.**



THE TAMR IS A NON-PROFIT ORGANIZATION CREATED TO PROMOTE, FOSTER, AND ENCOURAGE YOUNG PERSONS IN THE HOBBY OF MODEL RAILROADING, THE ACTIVITY OF RAILFANNING, AND THE PRESERVATION OF THE HISTORY, SCIENCE AND TECHNOLOGY THEREOF.

MEMBERSHIP TO THE TAMR INCLUDES AN ELEVEN MONTH SUBSCRIPTION TO THE HOTBOX, THE ANNUAL DIRECTORY OF MEMBERS, QUARTERLY REGIONAL NEWSLETTERS AND AN INVITATION TO PARTICIPATE IN ALL TAMR EVENTS. THE AVAILABLE MEMBERSHIP CATEGORIES ARE AS FOLLOWS: REGULAR (UNDER 21)-\$15, ASSOCIATE (21 AND OVER)-\$20, INTERNATIONAL (OUTSIDE US)-\$18

TO BECOME A PART OF THE TAMR, OR TO RENEW SEND YOUR INFORMATION TO:  
NICK WILSON, TAMR TREASURER,

OFFER GOOD WHILE SUPPLIES LAST, SEE STORE FOR COMPLETE DETAILS, NO PURCHASE NECESSARY, VOID WHERE PROHIBITED. FOR A COMPLETE LIST OF RULES, REGULATIONS, AND THE BEST DARN RESTUARANTS IN STURTEVANT, WI SEND A SSAEBDR TO THE ABOVE ADDRESS. IF YOU ARE AT ALL UNSATISFIED WITH THE HOTBOX PLEASE RETURN UNUSED PORTION FOR A COMPLETE BLOW-OFF BY OUR STAFF. THANK YOU!

## COMING SOON TO **THE HOTBOX** :

"Ask the Noodle Guys" , POASSB continues

## COMING SOON TO **THE TAMR**:

Our 40<sup>th</sup> anniversary is just a few month's away. A special edition of The Hotbox celebrating this milestone will be running in January. Help is needed, so all you veteran members out there do your part and help us make this an occasion worth celebrating!

This Febuary, West Springfield, MA will once again be the host for the TAMR Winter National Convention. It will be held in conjunction with the Amherst Railway Society Train Show January 30-February 1. For information contact: Doug Engler @ [Nastrn3@yahoo.com](mailto:Nastrn3@yahoo.com) or snail mail @ 10 Broadmarsh Ave. Wareham, MA 02571



**TAMR HOTBOX**