

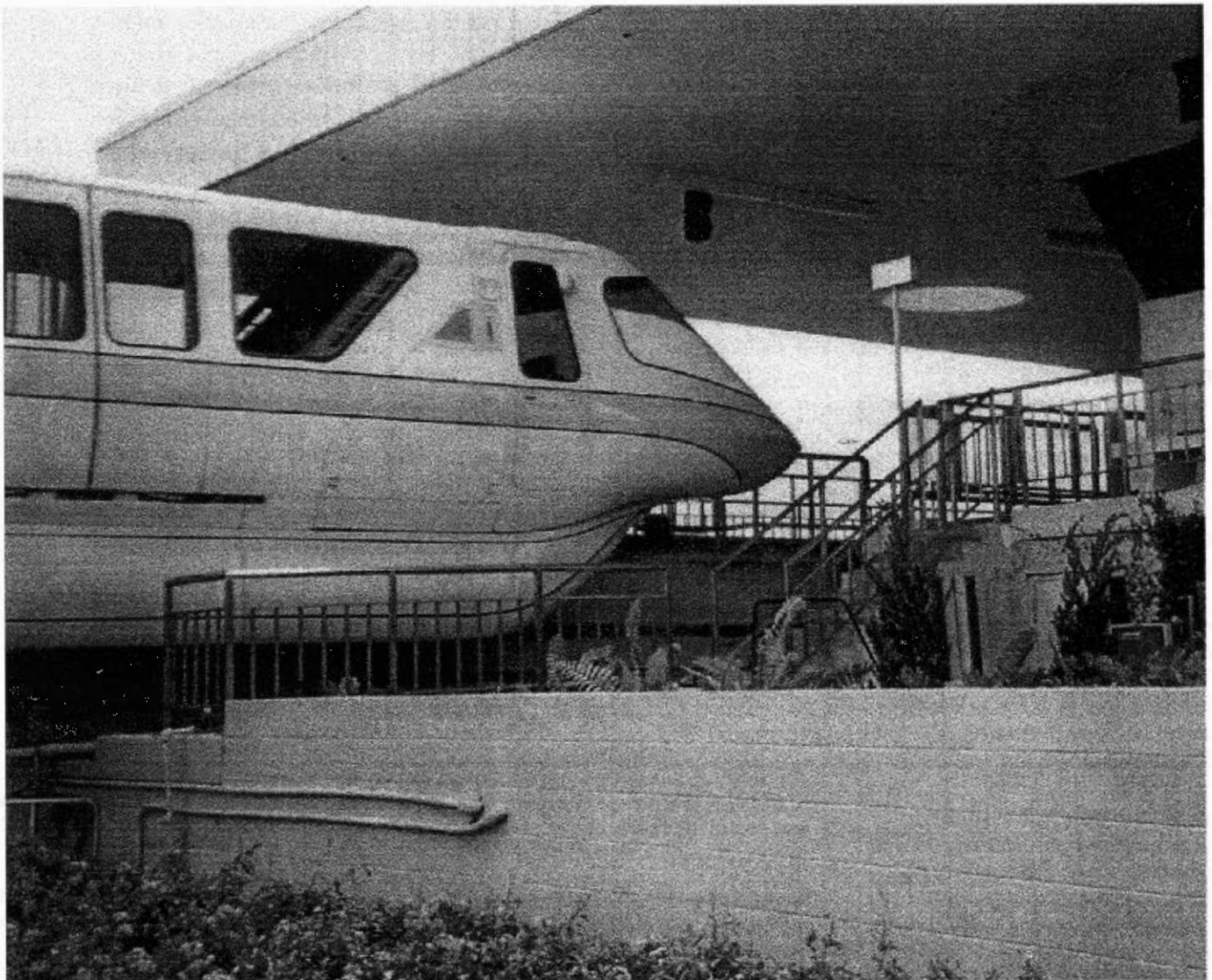
THE HOTBOX

Youth Model Railroading at its finest!

May 2002

ISSN 1093-622X

Issue #358



Buy a Monorail Cab Unit! See the News section!

Classic Loassb and Top 7

**THE OFFICIAL PUBLICATION OF
THE TEEN ASSOCIATION OF MODEL RAILROADERS**

The HotBox

May 2002
Issue 358

Send Articles to:
Charles Warczinsky

Editor:
Charles Warczinsky
charleswacinsky@mail.com

Layout Design Artist:
Andy Inserra
Andy_Inserra@tamr.org

Contributions!

We always need contributions in all forms. Please send the following in if you wish for the staff to consider for an upcoming issue of *The Hotbox*.

Feature Articles:

This is what we really need. They can be from a half page to two pages typed on anything related to railroading, railfanning, model railroading, you get the idea. Accompanying pictures are also welcome.

Columns:

Another thing we can always use! If you wish to start one, please drop us a line. And if you like a current column, please let the staff know, we like the feedback.

Photos and Drawings:

Do you have great pictures collecting dust? Railroading cartoons just sitting around? Drawings just waiting to be great works of art? Well send them in for consideration by us! Photos should be 3in x 4in minimum. Artwork should be on plain white paper with black ink.

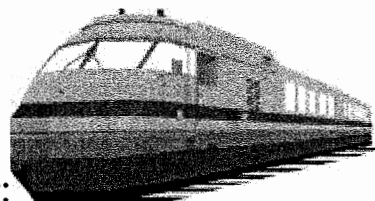
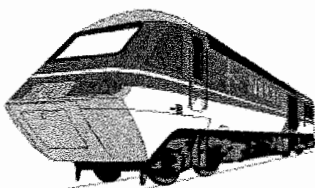
Questions?

Ask the editor for more info.

On the Cover:

Monorail Yellow of the Walt Disney World Monorail System enters the Ticket and Transportation Center. A monorail exactly like it is up for auction – see the news section for all the details.

Andy Inserra photo.



Inside this Issue:

Features:

- None this month

Columns:

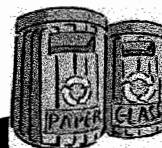
- Classic Top 7
- Classic LOASSB
- POASSB
- Loassb –Special Edition
- Rail Tales

Page 5
On vacation
Page 8
Page 14
On vacation

Departments:

- Directory
- From the Tower
- A word from the Editor
- A word from the Layout Design Artist
- Events Calendar
- TAMR on the Web
- TAMR News and Reviews

Page 3
Page 4
Page 5
Page 5
Page 7
Page 9
Page 10



Please Read and Recycle

Thanks to rrhistorical.com for some of the railway clipart.

The TAMR is a non-profit organization created to promote, foster, and encourage young persons in the hobby of model railroading, the activity of railfanning, and the preservation of the history, science and technology thereof.

Membership to the TAMR includes an eleven issue subscription to the *Hotbox*, the annual directory of members, quarterly regional newsletters and an invitation to participate in all TAMR events. The available membership categories are as follows:

Regulars (under 21).....\$15
Associate (21 and over)....\$20
International (outside US)...\$15
Sustaining.....\$20

Please send membership to:
Hans Raab, TAMR Treasurer,

TAMR DIRECTORY

YOUR HOTBOX CREW!

Hotbox Editor---- Charles Warczinsky
charleswarczinsky@mail.com

Asst. Editor – Josh Miller
mailto:grandmillion@hotmail.com

Layout Design Artist –
Andy Inserra Andy_Inserra@tamr.org

News Director- Nicholas Wilson
emdsd40-2@juno.com

Reviews Director- Nicholas Wilson
emdsd40-2@juno.com

Columnist extraordinaire- Peter Maurath
Pencntrl1@aol.com

Contributing Editors –See editorial page

OTHER REALLY IMPORTANT PEOPLE

President- Chris Burchett
president@tamr.org

Vice President- Joel Durfee
vice_president@tamr.org

Treasurer- Hans Raab
treasurer@tamr.org

Auditor – Andrew Matarazzo
TAMRnymets@aol.com

TAMR Gov't Advisor- Brad Beaubien

Pivot Pin- Tim Vermande
pivotpin@tamr.org

Promotion Manager-
Andy Inserra
Andy_Inserra@tamr.org

Car Exchange

Doug Engler
Joe Bohannon

Department of Advisors

Chris Wagner
TAMRadvisor@hotmail.com

2002 TAMR National Convention Director

Andrew Matarazzo
TAMRnymets@aol.com

Video Exchange

TAMRvideo@aol.com

Lewis Ableidinger
Chris Burchett
Newton Vezina

REPRESENTATIVES AND MORE

Northeast Region Rep.-Andrew Sabens
TAMR13@aol.com

Central Region Rep.-Louis Granato III
centralregion@tamr.org

Southern Region Rep.- Josh Trower
gg1_4935@hotmail.com

Western Region Rep.- Joe Bohannon
Canadian/International Region Rep.-
Open

One Mile Div. [MA]

Barry Simmons
bsimmons@capecod.net

Willie Roberge, Doug Engler

NY/NJ Metro Div.

Andrew Matarazzo
TAMRnymets@aol.com

Dimitros Fradelakis

Metallicarox54@hotmail.com

Great Plains Div. [ND, SD, MN]

Lewis Ableidinger
Soo201@hotmail.com

Golden Empire Div. [CA]

Joe Bohannon
GeepM@fcmail.com

Heartland Div. [MO]

Joel Durfee
vicepresident@tamr.org

Catskill Mtn. Div. [NY]

Dave Mason
TAMR53@juno.com

Boston & Albany Div. [MA.]

Adam Sullivan
TAMR30@aol.com

North Wind Div. [BC]

Dane Nicholson
TAMR2860@aol.com

Air Line Div. [NC]

Josh Trower

Archivist

Mike Acree
TAMRMIKEA@aol.com

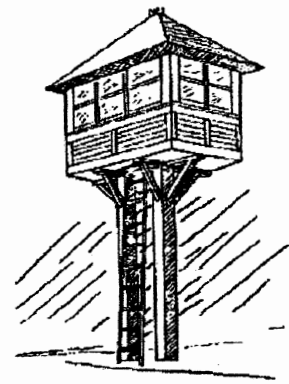
Webmaster

www.tamr.org
Louis Granito III

From the Tower

By Chris Burchett

President



Hello everyone! I'd like to take this time to welcome new members Josh Miller of St. Cloud, MN; Bob Kilkenny of Warminster, PA; and Robert McCulloch of Rochester, NY to the TAMR. Welcome aboard, guys!!

I have some disturbing news of which I am sorry to report. J&J Basic HO Layouts, LLC of Ada, Michigan is going out of business. Not long ago I received a letter from Grandpa Vago reporting this. I'm sure I speak for the entire TAMR when I offer my sincere condolences to J&J, and that you folks in Ada are continuously in our prayers.

The corporate sponsorship seems to be doing quite well. Andy Inserra has done a marvelous job in drumming up support for the TAMR through this new program. It is hoped to increase funds in the Treasury, thereby allowing further benefits. Two sponsors we now have are Railpace Company, Inc. and Model Railroad Industry Association. Thanks to our corporate sponsors for supporting the future of model railroading!

A change has recently occurred within the Board of Directors. On April 30, it was announced that the Board approved a position switch between Andy Inserra and Andrew Matarazzo. Effective April 30, Andy became the TAMR Promotions Manager and Andrew became the TAMR Auditor.

As seen on the events page, conventions are quite abundant again this year. Make plans to attend at least one this year, if it's at all possible. I assure you that it will increase your appreciation for your organization. Even attending a convention or TAMR-sponsored railfan meet is getting involved with your organization. Remember that anyone can host a meet, even if it's a one-day railfanning adventure at your favorite spot. Pick a date and announce it in the Hotbox!

If you have any questions or comments on anything you just read above, contact me. Contact info is, as always, available below. Practice safe, TAMR! From the tower, this Chris Burchett, signing off.

(Just a reminder, From the Tower now runs on an every other month schedule)

Chris:

Phone:

E-mail: president@tamr.org

AIM screen name: TAMRprez33

Snail-mail:

Joel (vice pres):

Phone:

E-mail:

vice_president@tamr.org

AIM screen name: TAMRvpJoel

Snail-mail:

A Word from the Editor

Hi Everyone

Well another issue is here and I'm sure that you have just finished reading my last editorial. I want to reinstate what I said. We want to see your contributions. Don't think that, oh, I'm just Charles (or your name) and nobody wants to see my pictures. We do. This publication is built around you the teenage model railroader (and railfan). Don't be an armchair TAMR member. Get out and PARTICIPATE! Have FUN! That's what this organization is all about. We are railfans because we enjoy trains, not because we are forced to. So don't act like you're forced to participate, participate because it's fun. Please remember that this organization will return what you give it. If you give a lot of effort, then you'll have a lot of fun. If not, then you won't get as much enjoyment out of it.

-Charles W

A word from the Layout Design Artist

Hi everyone!

Well – this issue is almost on time and our third 16 pager in a row! Dave Honan asked us to remind all of you that when you're out railfanning this summer to remember those funny tales of misfortune or incredible finds and pass them on to himself and Corey so that they can form the next installments of RailTales. So far the few items in-box for them is pretty lonely and need some company. This month we feature a mess of great press release notices from Atlas about their upcoming plans. And if you have sent photos – thanks much! They will be hitting the pages in up coming issues and will be returned shortly. If you do wish to have the returned – please send a SASE so we can make sure they get to the right place in a decent amount of time. But for now grab that glass of lemonade and enjoy the reading! Till next time, see you trackside.

-Andy Inserra

Thanks to this month's contributing editors:

Peter Maurath

Nick Wilson

Tim Vermande

Editor of the Month: Nick Wilson's New section is huge this month – without him it'd be a much smaller issue!

Classic Top 7

Top 7 rejected locations for the 1997 convention site.

Taken from the March 1997 Hotbox By: Peter Maurath

#7. On Metro bus 2274 en route to stockyards

#6. LaGuardia International Airport

#5. Cardboard box overlooking scenic highway overpass

#4. Wehatetrains, UT

#3. Waco, TX

#2. Three-Mile-Island, PA

#1. Zehnerville, AK

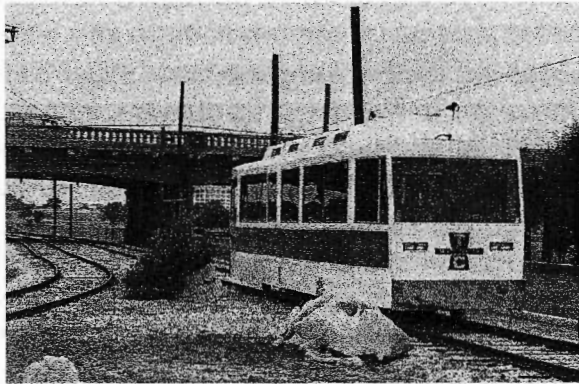
Photography on a Shoe String Budget – Tim Vermande

If you're taking pictures on a shoestring budget, one of the best ways to save money is to make every exposure count. Typically, one of two conditions will ruin a picture: composition or exposure. For this column and the next, I'll deal with some exposure issues.

Photography, as you may know, means "writing with light." Whether you are using digital or film, this is always the case. So it helps to understand the kinds of light and how to deal with them. Because I have some convenient and timely examples, we'll start with cloudy days.

The Tandy Subway is a short trolley line in Fort Worth TX. It provides transportation from a large parking lot just outside downtown to an office building in the downtown core. Because owner Radio Shack is moving, the line will be shut down by the end of 2002, unless the city or county acts to save it (it's also convenient to the court house and city offices). So we chose a day to travel over and see it before the end. With the typical almost-predictable regularity, that morning only vaguely dawned—it was cloudy as could be.

We found two kinds of situations.



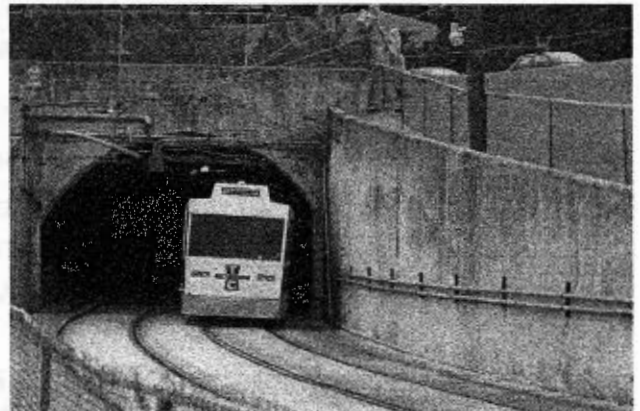
The first, and most common, is when the clouds become part of the background. This makes for nice, diffuse light—as we'll cover later, if the sun is shining, you have to worry about which way it's coming from. That's not a problem in cloudy weather. But all of that sunlight is still there—it's just that the clouds are scattering it, so they're very bright (even when they're dark), and the sky will be much brighter than a train, or any other subject, that's standing out there in the open. If you don't allow for this, your train will be too dark when the pictures are processed or viewed. There are three ways to deal with this:

(1) you may have a camera with a metering system that's up to it—an evaluative system, such as Nikon's Matrix metering. You may also have a spot meter, which will read only the center of the photo. If you do have either one of these, you'll probably need to use your automatic exposure setting, because the meter won't react properly without the subject in the frame, and if it's moving, you won't have time to react to the changes.

(2) if you have manual controls, meter something else and use that reading. In the case shown here, I metered some nearby cars and the parking lot surface.

(3) set an over exposure override. A 35mm SLR will typically have a knob that you can set to "0", "+1", "+2", as well as the same negative settings, and possibly some intermediate points. You'll need to experiment, because all meters are different, but +1-1/2 is a good starting point. A point and shoot camera, and most digital cameras, will have a button that you can set to increase the exposure (it may be called "backlight control" or something like that, and you don't usually have any control over how much change).

The second situation, far less common, but a lot easier to deal with, is when you can get above the subject—you're shooting downward. In this case, the clouds act as a diffuser. The light was evenly scattered on the subject, ground, and walls, and the meter worked just fine without compensation. The diffused light gave everything an even illumination, which turned what would otherwise be a difficult situation, because of shadows, into a fantastic opportunity.



So don't give up just because it's cloudy. Learn to use that diffused light to your advantage, and how to deal with its quirks. It can make for great pictures.



Upcoming Events

A bumper crop of activities this year!

April 26-28, 2002 (Sandusky, MI) So far I'm planning to show videos [Newton's] on Friday night, go railfanning all day on Saturday, and attend a show on Sunday. Start time is between 4 and 6 Friday afternoon, then maybe a pizza party, and videos. Saturday, the railfanning is between Port Huron and Durand [Mi]. If you get a map, find Detroit, then look north near the mouth of Lake Huron. From Port Huron, look west and find Flint, then look a little south and west along Interstate 69. Durand is about 10 miles I think west of Flint. It bills itself as a rail town. There are a lot of trains on this corridor, and the tunnel in Port Huron is usually busy, I think. Sunday, the train show. It's also a swap shop, and you can usually find some pretty good buys. Also planned for Sunday is some railfanning around the CSX yard in Port Huron. It happens to lie right next to the St. Clair River, and is kind of difficult to access, so that may be a short trip. Come to think of it, we could probably railfan it on Saturday, or save it for Sun. if we want to. The show runs only on Sun. so there is no Sat. option. I didn't plan the convention in time to get a table, so we'll only be attending. I'm holding it in Sandusky, because there is a short line that runs through the thumb that we could go see on Fri. night [if you don't mind the lateness] or sometime on Sat. If you want hotel info, let me know, I don't have rates yet, but these aren't chains and Sandusky isn't that big. In other words, they probably won't be booked.

JUNE 13-20, 2002 – Official Central Region Convention! This year it is a huge 8-day convention split into two sections, ND and MN.

JUNE 13-16, 2002 (Kensal, ND) The current dates I am planning for the "Mountaineer" are Thursday, June 13-Sunday, June 16, 2002. Here is a rundown of planned events

June 13: Head for Harvey, ND, railfan the CP/Soo - Tour Ray Kuntz's HO Soo Layout - Slides/Clinics

June 14: Railfan BNSF between Jamestown and Bismarck, ND - Dave's Hobbies - State RR Museum - Huge HO Layout (uncontested, largest in state) - Spend night in Bismarck

June 15: Morning railfan BNSF west to Judson, ND - Tour of Wilton, ND, HO Club layout - Convention dinner - Clinics/Slides

June 16: Morning - Open, probably will be filled with railfanning - Ride McHenry Loop
Afternoon - Railfan Valley City, ND

Of course this is subject to change, and probably will. For info contact Lewis Ableidinger at soo201@hotmail.com

JUNE 17-20, 2002 (Minneapolis/St Paul, MN) The second half of the "Mountaineer"

Monday, June 17 - Gang arrives from ND. Railfan University, Northtown, and surrounding areas. Wing it depending on arrival times from ND. Hit up Krispy Kreme in Maple Grove [count on this a lot!].

Tues - Railfan the Midway area, Amtrak, MNNR [early morning, trackside by 730]
Bandana Square area, railfan Soo, BNSF, CNW, see their monstrous O scale layout

Jackson St. roundhouse tour
Scale Model Supplies to stock up on all those essentials
Black Bear Crossing for a break, coffee shop with a deck for railfans to watch the
BNSF/Soo main, rail theme inside
Hoffman, Pig's Eye, and South St Paul for more railfanning
Bob Rivard's terrific Soo layout

Wed - Layout tours, Andy Inserra and Josh Miller

Open to revisit more railfan spots or local hobby shops like N Shop, SMS again, etc. or even Ax-Man, everything you could want - dirt cheap stuff that is great for the layout [toggle switches, lights, toxic waste trash bags, street sweeper brushes, etc]
Catch MILW 261 as it comes in from Duluth around 3-4 pm

Thurs - chase UP 4-6-6-4 3985 up the Spine Line to St Paul!

Railfan some more or hit the road for home...

For info contact Andy Inserra at Andy_Inserra@tamr.org

June 20-23, 2002 The TAMR Southern Region will be hosting its annual Summer convention June 20-23. The meet will be based out of Spencer, NC. Plans for layout tours, railfanning, and steam excursions are being ironed out. If your on your way to the National, how bout stop by NC? For further information contact Southern Region Rep. Josh Trower(GG1_4935@hotmail.com) or convention director Hayes Smith(cookiemonster@rrmail.com).

JULY 10-18, 2002 (New Jersey / New York) The Broadway Limited 2002. With it 4 months away, the 2002 TAMR National Convention is scheduled to be held in New York and New Jersey, hosted by one of the TAMR's fastest growing, and active divisions! Get ready for the best model railroading and railfanning in New York and New Jersey! For more information, contact The Drew Crew, 2002 Andrew Matarazzo, Convention Director. E-mail: TAMRnymets@aol.com and Northeast Region Rep., Andrew Sabens, (Convention Director) E-mail: TAMR13@aol.com

THIS JUST IN!!! The 2003 TAMR National Convention will be held in northern California during the month of July 2003!! For more information, contact Ross McKnight, E-mail: TAMR4449@aol.com

Have a big railfanning bash coming up? Tell us here at the Hotbox and we'll let the world know about it!

Like new products? Want to review them? Model Railroad News needs you to help them review new products! If you are interested in this great opportunity please let Andy know, he'll get you all the details!

TAMR ON THE WEB

What could be better than free stuff?

The TAMR has an active presence on the Internet, and we hope our members will take advantage of what we have to offer. All of this is included in your membership, so it is free. Yes, that's right, it won't cost you a dime!

First is our own site, www.tamr.org. Here you can find out what's going on and see pictures from conventions. If you have a picture to add, or would like your own web site linked, contact us. We are also always looking for members who would like to help with the site (no experience is required). If you would like to have your own page at the site, we'll help you with that, too. For more information, contact webmaster@tamr.org.

Second is our e-mail list. The list does not replace the *Hotbox*, but does provide a fun way for members to get the latest news and make new friends. You can join the list in several ways:

- send a blank e-mail to TAMR-subscribe@yahoo.com
- on the web, go to <http://groups.yahoo.com/group/TAMR>. (This is most useful if you are already registered with E-groups or Yahoo).
- send an e-mail to pivotpin@tamr.org and request an invitation.

Note: Yahoo has recently bought E-groups. Most URL's will take you to a Yahoo page. Until things settle down, you may experience some difficulty using the site. Contact the Pivot Pin if you have a problem.

Yahoo also has a "files" area where you can find the TAMR logo, some more pictures, and other information. Note: the list is only open to TAMR members, although a few exceptions occur for former members or industry contacts.

Third, you can have an e-mail address "@tamr.org." This is a forwarding address, so the e-mail is sent to another address that you already have. (It is possible to get a POP or stand-alone account, but there is a charge associated with this). For information, contact treasurer@tamr.org.

Check us out on-line!

www.tamr.org

And while on the web, stop by our sponsor's site!



**J AND J BASIC HO
LAYOUTS**



www.ho-only.com

They give discounts to all TAMR members

TAMR News & Reviews

By: Nick Wilson

Hello all! Welcome to this edition of TAMR News and Reviews! Thank you to all of you that contributed! Well, I'll keep this short and let you guys read what we have to offer in this edition! Plenty of news from Atlas to keep your layouts running smoothly as well as keep them up to date!

Rail Excursions in the Thumb of Michigan

By: Charles Warczinsky

There are a couple of rail excursions coming up in my area (Michigan's Thumb) this summer. The first is July 20, and the second is August 10. Both trains run over former NYC and C&O track age, now Rail America's Huron & Eastern, and Saginaw Valley Railroads. The Bluewater Michigan Chapter of the National Railway Historical Society (NHRS) operates them.

Army Train In New England

By: Doug Engler

BCLR ran an Army train on Tuesday, May 14 through Wareham, MA at about 10am. I didn't catch the power but I do know they have 3-4 different locomotives that they run. Common locos are Bay Colony #1702, 1703, an Operation Lifesaver unit, and an OmniTRAX engine.

ATLAS TO RELEASE ALL NEW MODEL N ACF® 11,000 GALLON TANK CAR

Atlas Model Railroad Company presents the release of its new N ACF 11,000 Gallon Tank Car. The 11,000 gallon tank car, built in the 40's and 50's is a true replica of American Car and Foundry's specialized tank car and was designed primarily for transporting liquefied petroleum gas.

FEATURES INCLUDE:

- Finely molded handrails
- Tank fittings and safety placards
- 50-ton friction-bearing trucks with AccuMate® couplers
- Accurate painting and lettering
- Platform where appropriate

ITEM #	ROAD NAME	ROAD #
N ACF 11,000 GALLON TANK CAR (without platform)		
43300	Undecorated (Without Platform)	
43301	California Dispatch Line (Black/Silver)	1525
43302	California Dispatch Line (Black/ Silver)	1528
43311	Fuelane Corp. (Silver/Black/Red/Blue)	130
43312	Fuelane Corp (Silver /Black/Red/Blue)	133
43321	Warren Petroleum Corp. (Black/ Silver /Green)	9370
43322	Warren Petroleum Corp. (Black/ Silver /Green)	9375
N ACF 11,000 GALLON TANK CAR (with platform)		
43600	Undecorated (With Platform)	

43601	Associated Cooperatives, Inc. (Black/White)	100
43602	Associated Cooperatives, Inc. (Black/White)	200
43611	Gulf Oil Corp. (Black/Silver/Orange/Black/White)	5772
43612	Gulf Oil Corp. (Black/Silver/Orange/Black/White)	5775
43621	Pyrofax Bottled Gas (Black/White)	1366
43622	Pyrofax Bottled Gas (Black/White)	1367
43631	Shippers Car Line (Black/White)	2580
43632	Shippers Car Line (Black/White)	2582
43641	Sid Richardson Gasoline Corp. (Black/White)	5391
43642	Sid Richardson Gasoline Corp. (Black/White)	5395

MSRP: \$14.95

Undecorated MSRP: \$11.95

Coming in July!

ATLAS TO RELEASE NEW ROAD NUMBERS & (2) NEW PAINT SCHEMES FOR N 90 TON HOPPERS

Atlas is proud to release New Road Numbers and (2) New Paint Schemes for its popular N Scale 90 Ton Hopper. The Hopper is ready-to-run and comes beautifully painted with realistic details and AccuMate® couplers.

ITEM #	ROAD NAME	ROAD #	PRICE
32772	Conrail	490443	6.95
32783	Chesapeake & Ohio	82525	6.95
32793	New York Central	904944	6.95
32803	Burlington Northern	521421	6.95
32833	Norfolk Southern	144684	6.95
32853	Canadian National	111122	6.95
32862	Soo Line	60202	6.95
32872	Chessie B&O	186862	7.50
32883	Chessie C&O	183053	7.50
32893	Chessie WM	832342	7.50
32903	Pennsylvania-Early	669600	6.95
32913	CSX	811287	7.50
32922	Penn Central	480550	6.95
32932	Chicago & Northwestern	135813	8.50
32811	Frisco-NEW!	87829	7.50
32812	Frisco-NEW!	88614	7.50
32821	Lake Erie, Franklin & Clarion- NEW!	3662	7.50
32822	Lake Erie, Franklin & Clarion- NEW!	3974	7.50

Coming in August!

ATLAS TO RELEASE NEW ROAD NUMBERS AND (1) NEW ROAD NAME N 70 TON ORE CARS

Atlas presents the release of New Road Numbers and (1) New Road Names for its popular N scale 70 Ton Ore Cars. The ore cars are ready-to-run and loaded with realistic details and AccuMate® couplers.

ITEM #	ROAD NAME	ROAD NUMBER	PRICE
3200	Undecorated		6.25
32013	Canadian National (Box Car Red/White)	343017	6.95
32023	Union Pacific (Silver/Red)	26429	6.95
32033	Minnesota Smelting (Orange/Brown)	112	6.95
32043	Bessemer & Lake Erie (Brown/White)	20343	6.95
32053	Burlington Northern(Green/White)	95902	6.95
32062	Milwaukee Road (Box Car Red/White)	76492	6.95
32073	Utah Copper (Brown/White)	444	6.95
32083	Duluth & Two Harbors (Red/White)	266	6.95
32103	Great Northern (Blue/White)	95339	6.95
32113	Erie Mining (Black/White)	2311	6.95
32123	Chicago & Northwestern (Box Car Red/White)	113535	6.95
32133	Union Pacific (Box Car Red/Yellow)	8028	6.95
32153	Northern Pacific (Black/White)	78327	6.95
32162	Thunder Bay Mining (Brown/Orange)	711	6.95
32173	Great Northern (Green/Red)	91844	6.95
32183	Southern Pacific (Box Car Red/White)	467513	6.95
32203	Santa Fe (Box Car Red/White)	794149	6.95
32213	Missabe (Box Car Red/Yellow)	32838	6.95
32223	Pennsylvania (Box Car Red/White)	15055	6.95
32233	Soo Line (Black/White)	81418	6.95
32253	Great Northern (Box Car Red/White)	93742	6.95
32262	Milwaukee Road (Box Car Red/White)	75220	6.95
32271	CP Rail-NEW! (Black/Red/White)	377227	6.95
32272	CP Rail-NEW! (Black/Red/White)	377238	6.95

Coming in August!

ATLAS TO RELEASE NEW PAINT SCHEMES HO DASH 8-40B LOCOS

Atlas is proud to release new paint schemes for its HO DASH 8-40B locomotive. Built in the late 1980's by GE, the DASH 8-40B diesel locomotives were identified by their dynamic brake gear located along the roof line between the cab and engine compartment, with ventilation provided by large roof-top grilles.

Its features include a New HO four- function Dual-Mode(tm) decoder, realistic die-cast underframe, five- pole skewed armature motor, directional lighting, factory-equipped with AccuMate® knuckle couplers, painted crew figures, separately-installed scale windshield wipers, metal grab irons and fine scale handrails, highly detailed coupler cut bars, multiple unit hoses and trainline hoses, snowplow, shock absorbers, piping on trucks and a simulated roof-top beacon.

ITEM #	DESCRIPTION
9000	Undecorated
9029-9030-9031	BC Rail (B39-8 Blue/White/Silver)
9032-9033	BNSF-Santa Fe "Patch Job" (Blue/Yellow)
9034-9035-9036	Conrail Quality (Blue/White/Black)
9037-9038	CSX-Susquehanna "Patch Job" (Black/Yellow)

MSRP: \$139.95

Coming in September!

ATLAS TO RELEASE NEW PAINT SCHEMES HO GP-38 & GP-40 LOCOMOTIVES

Atlas announces the release of New Paint Schemes for its popular HO GP-38 & GP-40 Locomotives. Features include: realistic die-cast underframe, five-pole skewed armature motor with dual flywheels, directional lighting, factory-equipped with AccuMate® knuckle couplers, detailed cab interior with crew, separately-installed scale windshield wipers, metal grab irons and fine scale handrails, movable drop steps, walkway safety tread, coupler cut bars and multiple unit hoses and trainline hoses. Additional feature parts included but not installed are: snowplow, electrical cabinet air filter box, and two engine compartment roof vents. The GP-38 and GP-40 locomotives are available in dynamic or non-dynamic brake versions, with either a 2600 or 3600 gallon fuel tank as appropriate by railroad.

ITEM #	ROAD NAME	ROAD NUMBER
HO GP-40- Low Nose		
8900	Undecorated GP-40 Low Nose	
9180	Chicago & Northwestern (Green/Yellow)	5534
9181	Chicago & Northwestern (Green/Yellow)	5537
9182	Chicago & Northwestern (Green/Yellow)	No #
9183	Rio Grande (Black/Orange-Large Lettering)	3131
9184	Rio Grande (Black/Orange-Large Lettering)	3141
9185	Rio Grande (Black/Orange-Large Lettering)	No #
9186	Milwaukee Road (Black/Orange)	2026
9187	Milwaukee Road (Black/Orange)	2034
9188	Milwaukee Road (Black/Orange)	No #
HO GP-40- High Nose		
8940	Undecorated GP-40 High Nose	
8947	Norfolk Southern (Black/White)	1369
8948	Norfolk Southern (Black/White)	1388
8949	Norfolk Southern (Black/White)	No #
HO GP-38 Early Version		
9100	Undecorated GP-38 Early Version- Low Nose	
9116	Bangor & Aroostook (Blue/Yellow)	82
9117	Bangor & Aroostook (Blue/Yellow)	83
9118	Bangor & Aroostook (Blue/Yellow)	No #
HO GP-38 Early Version- High Nose		
9130	Undecorated GP-38 Early Version - High Nose	
9131	Southern (Black/Imitation Aluminum)	2735
9132	Southern (Black/Imitation Aluminum)	2743
9133	Southern (Black/Imitation Aluminum)	No #
GP-38- Low Nose		
8960	Undecorated GP-38 - Low Nose	
9150	CP Rail (Red/Black/White large multimark)	3002
9151	CP Rail (Red/Black/White large multimark)	3008
9152	CP Rail (Red/Black/White large multimark)	No #
9153	Chessie (Blue/Yellow/Vermilion)	B&O 4806
9154	Chessie (Blue/Yellow/Vermilion)	C&O 4829
9155	Chessie (Blue/Yellow/Vermilion)	No #/ Sublettering
9156	Pittsburgh & Lake Erie (Black/Yellow)	2025

9157	Pittsburgh & Lake Erie (Black/Yellow)	2028
9158	Pittsburgh & Lake Erie (Black/Yellow)	No #

MSRP: \$129.95

Coming in September 2002

ATLAS TO RELEASE NEW HO DUAL-MODE(tm) 4- FUNCTION DECODER

Atlas is proud to announce the release of its NEW HO Dual- Mode(tm) 4- Function Decoder. This patented 4- function decoder, once installed, allows your locomotive to operate on both digital and analog layouts. The dual mode decoder can be installed in almost any locomotive equipped with a motor- mounted light board.

Features Include:

- .. Designed to follow all NMRA DCC Standards, and RP's to ensure full compatibility with all compliant NMRA DCC systems
- .. 14, 28, 128 speed step selectable
- .. Four function outputs, each with a current rating of 200ma
- .. Headlights may be configured for directional, independent, or Rule 17 lighting and may be dimmed using another function
- .. Additional functions may be configured for ditch lights, or independent on/off control with variable blink rate
- .. Support for advanced consist control and extended addressing
- .. Full support for operations mode programming (long and short) and for programming as described in the NMRA RP 9.2.3
- .. Provides 1 Amp continuous motor current
- .. Size 2.88"L x 0.68"W x 0.26"H

ITEM #	Description	MSRP
342	HO Dual- Mode 4 Function Decoder	\$29.95

ATLAS TO RELEASE NEW PAINT SCHEMES & ROAD NUMBERS N 17,360 GALLON TANK CAR

Atlas announces the release of new paint schemes and road numbers for its ready-to-run N 17,360 Gallon Tank Car. The tank car is modeled after American Car and Foundry's insulated general service tank car designed primarily for transporting chlorine.

FEATURES INCLUDE:

- .. Separately-applied brake detail
- .. Finely molded handrails
- .. Tank fittings, safety placards and metal safety bars
- .. 100-ton roller-bearing trucks with AccuMate(r) couplers
- .. Accurate painting and lettering
- .. Brake wheel chain

ITEM #	ROAD NAME	ROAD NUMBER
<i>N 17,360 Gallon Tank Car- New Road Numbers</i>		
40500	Undecorated	

40503	ACFX (Black-Olin Chem.)	77371
40504	ACFX (Black-Olin Chem.)	77411
40513	ACFX (Black w/ Orange Stripe)	77350
40514	ACFX (Black w/ Orange Stripe)	77355
40523	ACFX (White w/ Black center band)	86457
40524	ACFX (White w/ Black center band)	86476
40533	Diamond Shamrock (White/Black/Blue/Red)	85545
40534	Diamond Shamrock (White/Black/Blue/Red)	85566
40543	Occidental (Hooker-Gray)	132261
40544	Occidental (Hooker-Gray)	132270
40553	Hooker (Orange/Black/White)	1264
40554	Hooker (Orange/Black/White)	1266
40563	PPG (Red/Black)	1501
40564	PPG (Red/Black)	1520
40573	Stauffer Chemical (Gray/Black)	85278
40574	Stauffer Chemical (Gray/Black)	85282
<i>N 17,360 Gallon Tank Car- New Road Names</i>		
40581	Simpson-Lee (Blue/White)	86202
40582	Simpson-Lee (Blue/White)	86230
40591	Olin-Matheison (Black/White)	19421
40592	Olin-Matheison (Black/White)	19441
40601	SHPX (Black/White)	240300
40602	SHPX (Black/White)	240303

Coming in October!

MSRP: \$16.95

Undecorated MSRP: \$11.95

ATLAS TO RELEASE NEW PAINT SCHEMES & ROAD NUMBERS HO 17,360 GALLON TANK CAR

Atlas announces the release of new paint schemes and road numbers for its ready-to-run HO 17,360 Gallon Tank Car. The tank car is modeled after American Car and Foundry's insulated general service tank car designed primarily for transporting chlorine.

FEATURES INCLUDE:

- Brake rigging molded separately
- Scale handrails
- Metal safety bars, tank fittings and safety placards
- AccuMate(r) couplers
- Accurate painting and lettering
- Brake wheel chain
- Screw-attached
- 100-ton roller bearing trucks for added reliability

ITEM #	ROAD NAME	ROAD NUMBER
--------	-----------	-------------

HO 17,360 Gallon Tank Car- New Road Numbers

1550	Undecorated	
1551-3	ACFX (Black-Olin Chem.)	77371
1551-4	ACFX (Black-Olin Chem.)	77411
1552-3	ACFX (Black w/ Orange Stripe)	77350
1552-4	ACFX (Black w/ Orange Stripe)	77355
1553-3	ACFX (White w/ Black center band)	86457
1553-4	ACFX (White w/ Black center band)	86476
1554-3	Diamond Shamrock (White/Black/Blue/Red)	85545
1554-4	Diamond Shamrock (White/Black/Blue/Red)	85566
1555-3	Occidental (Hooker-Gray)	132261
1555-4	Occidental (Hooker-Gray)	132270
1556-3	Hooker (Orange/Black/White)	1264
1556-4	Hooker (Orange/Black/White)	1266
1557-3	PPG (Red/Black)	1501
1557-4	PPG (Red/Black)	1520
1558-3	Stauffer Chemical (Gray/Black)	85278
1558-4	Stauffer Chemical (Gray/Black)	85282

HO 17,360 Gallon Tank Car- New Road Names

1559-1	Simpson-Lee (Blue/White)	86202
1559-2	Simpson-Lee (Blue/White)	86230
1559-3	Olin-Matheison (Black/White)	19421
1559-4	Olin-Matheison (Black/White)	19441
1560-1	SHPX (Black/White)	240300
1560-2	SHPX (Black/White)	240303

Coming in September!

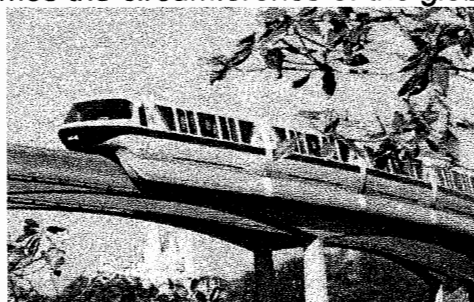
Undecorated MSRP: \$19.95

MSRP: \$22.95

And this month's big news...

Walt Disney World is selling the cab car of Monorail Red!

Yes, that's right. At Disney's official auction site – www.disneyauctions.com - you can bid on the cab of Monorail Red. They utilize colors rather than numbers to label each monorail. Seen on the cover is Monorail Yellow; below is Monorail Black. Now of course this will most likely be out of most members' budgets (if not contact the Hotbox crew, we'd like to exploit your wealth sometime!) but it will be interesting to see how much money this historic piece of rail history will fetch. It has traveled over 943,976 miles – over 38 times the circumference of the globe.



Monorail Black – the Magic Kingdom is behind the cab. Andy Inserra photo.