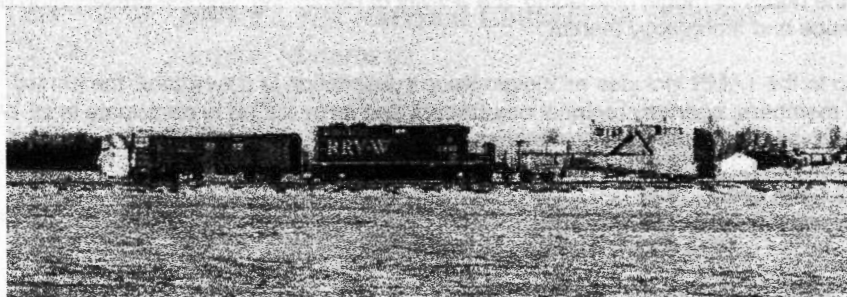


# ***THE HOTBOX***

***Youth Model Railroading at its Finest!***

**August 2001  
Issue #349**

**ISSN 1093-622X**



**The First Ever  
All Photo  
Issue!**

**THE OFFICIAL PUBLICATION OF  
THE TEEN ASSOCIATION OF MODEL RAILROADERS**

## **The HotBox**

August 2001  
Issue 349

Send Articles to:  
Charles Warczinsky

Editor:  
Charles Warczinsky  
[charleswacinsky@mail.com](mailto:charleswacinsky@mail.com)

Layout Design Artist:  
Andy Inserra  
[Andy\\_Inserra@tamr.org](mailto:Andy_Inserra@tamr.org)

### **Contributions!**

We always need contributions in all forms. Please send the following in if you wish for the staff to consider for an upcoming issue of *The Hotbox*.

### **Feature Articles:**

This is what we really need. They can be from a half page to two pages typed on anything related to railroading, railfanning, model railroading, you get the idea. Accompanying pictures are also welcome.

### **Columns:**

Another thing we can always use! If you wish to start one, please drop us a line. And if you like a current column, please let the staff know, we like the feedback.

### **Photos and Drawings:**

Do you have great pictures collecting dust? Railroading cartoons just sitting around? Drawings just waiting to be great works of art? Well send them in for consideration by us! Photos should be 3in x 4in minimum. Artwork should be on plain white paper with black ink.

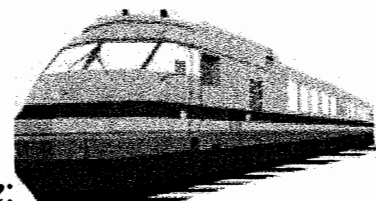
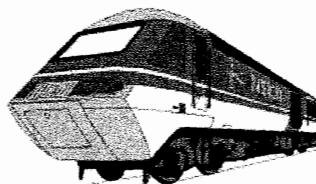
### **Questions?**

Ask the editor for more info.

### ***On the Cover:***

An NS westbound passes the Amtrak waiting in Altoona, Pa. Nevin Byers photo.

*Inset* - This Red River Valley & Western plow extra was working on an ex-Northern Pacific branch that now only goes to Woodworth, ND, on Jan. 9, 2001. This picture was taken near the almost non-existent town of Vashti, ND. Lewis Ableidinger photo.



### **Inside this Issue:**

#### **Features:**

- Photos!

Page 6

#### **Columns:**

- Top 7
- LOASSB
- Ask Geep M

Page 5  
On vacation  
On vacation

#### **Departments:**

- Directory
- From the Tower
- A word from the Editor
- A word from the Layout Design Artist
- Events Calendar
- TAMR on the Web

Page 3  
Page 4  
Page 5  
Page 5  
On vacation  
On vacation



***Please Read and Recycle***

Thanks to [rrhistorical.com](http://rrhistorical.com) for some of the railway clipart.

The TAMR is a non-profit organization created to promote, foster, and encourage young persons in the hobby of model railroading, the activity of railfanning, and the preservation of the history, science and technology thereof.

Membership to the TAMR includes an eleven issue subscription to the *Hotbox*, the annual directory of members, quarterly regional newsletters and an invitation to participate in all TAMR events. The available membership categories are as follows:

Regulars (under 21).....\$15  
Associate (21 and over)....\$20  
International (outside US)..\$15  
Sustaining.....\$20

Please send membership to:  
Hans Raab, TAMR Treasurer

# TAMR DIRECTORY

## **Your Hotbox 2001 Crew!**

**Hotbox Editor**---- Charles Warczinsky  
[charleswarczinsky@mail.com](mailto:charleswarczinsky@mail.com)

**Layout Design Artist** --  
Andy Inserra [Andy\\_Inserra@tamr.org](mailto:Andy_Inserra@tamr.org)

**News Director**- Nicholas Wilson  
[emdsd40-2@juno.com](mailto:emdsd40-2@juno.com)

**Reviews Director**- Nicholas Wilson  
[emdsd40-2@juno.com](mailto:emdsd40-2@juno.com)

**Contributing Editors** --See page 5  
**Other Really Important People**

**President**- Chris Burchett  
[president@tamr.org](mailto:president@tamr.org)

**Vice President**- Joel Durfee  
[vice\\_president@tamr.org](mailto:vice_president@tamr.org)

**Treasurer**- Hans Raab  
[treasurer@tamr.org](mailto:treasurer@tamr.org)

**Auditor** - Andy Inserra  
[Andy\\_Inserra@tamr.org](mailto:Andy_Inserra@tamr.org)

**TAMR Gov't Advisor**- Brad Beaubien

**Pivot Pin**---- Tim Vermande  
[pivotpin@tamr.org](mailto:pivotpin@tamr.org)

**Promotion Manager**---- Andrew Matarazzo  
[TAMRnymets@aol.com](mailto:TAMRnymets@aol.com)

**Assistant Promo Mgr**---- Joe Bohannon  
[GeepM@fcmail.com](mailto:GeepM@fcmail.com)

**Car Exchange**  
Doug Engler  
Joe Bohannon

**Department of Advisors**  
Chris Wagner  
[TAMRadvisor@hotmail.com](mailto:TAMRadvisor@hotmail.com)

**2002 TAMR National Convention Director**  
Andrew Matarazzo  
[TAMRnymets@aol.com](mailto:TAMRnymets@aol.com)

**Video Exchange**  
[TAMRvideo@aol.com](mailto:TAMRvideo@aol.com)  
Lewis Ableidinger  
Chris Burchett  
Newton Vezina

## **Representatives and more**

**Northeast Region Rep.**-Andrew Sabens  
[TAMR13@aol.com](mailto:TAMR13@aol.com)

**Central Region Rep.**-Louis Granato III  
[centralregion@tamr.org](mailto:centralregion@tamr.org)

**Southern Region Rep.**- Josh Trower  
[gg1\\_4935@hotmail.com](mailto:gg1_4935@hotmail.com)

**Western Region Rep.**- open

**Canadian/International Region Rep.**-  
Dane Nicholson  
[TAMR2860@Canada.com](mailto:TAMR2860@Canada.com)

**One Mile Div. [MA]**

Barry Simmons  
[bsimmons@capecod.net](mailto:bsimmons@capecod.net)  
Willie Roberge, Doug Engler

**NY/NJ Metro Div.**

Andrew Matarazzo  
[TAMRnymets@aol.com](mailto:TAMRnymets@aol.com)  
Dimitros Fradelakis  
[Metallicarox54@hotmail.com](mailto:Metallicarox54@hotmail.com)

**Great Plains Div. [ND, SD, MN]**

Lewis Ableidinger  
[Soo201@hotmail.com](mailto:Soo201@hotmail.com)

**Golden Empire Div. [CA]-**

Joe Bohannon  
[GeepM@fcmail.com](mailto:GeepM@fcmail.com)

**Heartland Div. [MO]**

Joel Durfee  
[vicepresident@tamr.org](mailto:vicepresident@tamr.org)

**Catskill Mtn. Div. [NY]**

Dave Mason  
[TAMR53@juno.com](mailto:TAMR53@juno.com)

**Boston & Albany Div. [MA.]**

Adam Sullivan  
[TAMR30@aol.com](mailto:TAMR30@aol.com)

**North Wind Div. [BC]**

Dane Nicholson  
[TAMR2860@aol.com](mailto:TAMR2860@aol.com)

**Air Line Div. [NC]**

Josh Trower

**Archivist**

Mike Acree  
[TAMRMIKEA@aol.com](mailto:TAMRMIKEA@aol.com)

**Webmaster**

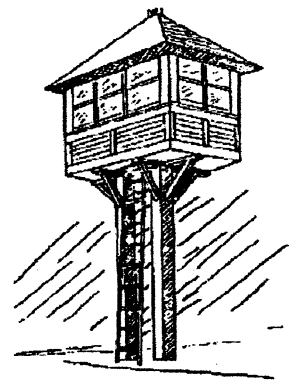
[www.tamr.org](http://www.tamr.org)  
Dane Watson

# From the Tower

**By Chris Burchett and Joel Durfee**

*President*

*Vice President*



Hello everyone! The organization is growing! Four new members have joined since the last issue in a one week period. Please say hello to Alex Seaman of Grantville, PA; Rachel Beemer of Kyle, TX; Brian Landrie of Old Bridge, NJ; Jeremy Rusakowski, also of Old Bridge, NJ; and Raymond Reyes of Matawan, NJ. Welcome aboard!!

The convention hosted in New Jersey during mid-August, reported by Newton Vezina, was a great success. The TAMR took in over \$50 in donations, most notably from Greenburg Shows. Greenburg deserves a big "thank you" for helping the TAMR continue on! Another "thank you" should also go out to the Great American Train Show, as they also help the TAMR out considerably.

Don't forget to order your official Teen Association of Model Railroaders HO scale boxcar by Athearn! Even if you're not an HO-scaler, it would make an awesome display piece. Cost is \$10 U.S., plus \$3.50 shipping. For more information, contact Northeast Region Representative Andrew Sabens at (914)631-8239 or [northeastregion@tamr.org](mailto:northeastregion@tamr.org).

Though not much has been said about our tax status recently, the Board will be looking into the matter of changing our current status (501c7) to the much more flexible 501c3 tax-exempt status. This would allow the TAMR to do much more than it already is. More information will be released over time.

Help out the *Hotbox* staff! They need as much help as they can get in producing each issue. Even if you can only contribute one photo, that would be gladly accepted. This is *your* magazine. If you don't see any content of interest, write an article about a railfanning location near you or a model railroad tip/trick. It doesn't take a whole lot to write a good half-page or so article on something you enjoy, like watching trains or building a model layout and all that goes along with it. The *Hotbox* staff and the entire membership is eagerly awaiting your article and/or photos!

Well that about covers the latest TAMR news and information. If you have any questions on anything mentioned above, have a question on the TAMR in general, and/or have a comment or suggestion, let me know. It's great to hear from you. This is your organization. Your views and opinions help make it better. Even if you'd just like to talk trains for a while, hey, those are the best!

Well, that's all for this issue. Study hard this school year and "keep on trucking - by train!" From the tower, this is Chris Burchett, signing off.

**Chris:**

**Phone:** .....

**E-mail:** ..... [president@tamr.org](mailto:president@tamr.org)

**AIM screen name:** TAMRprez33

**Snail-mail:**

**Joel:**

**Phone:** .....

**E-mail:** .....

**vice\_president@tamr.org**

**AIM screen name:** TAMRvpJoel

**Snail-mail:**

## A Word from the Editor

Hi all,

I'd like to apologize for the delays in the producing and mailing the Hotbox. Most of the delays are my fault, as I have had difficulties in copying the materials. Also, you will hopefully receive this a few days after you receive the July issue, and the directory. I ran into several snags with the equipment I am using to do the Hotbox. As of the writing of this editorial, you will hopefully receive both the July issue and the August issue in about two to three weeks.

I do not like to cast or share blame, but we do have a small problem with submissions. There are not enough. As Andy usually says, and I feel I need to agree with, we need articles. Your article can be on any aspect of the hobby, and doesn't have to be an article. It can be a picture, a cartoon, or something else. That's all for this month from the editor!

-Charles W

## A word from the Layout Design Artist

Hi everyone!

Well, here it is, the long anticipated, much talked about, bound to be a collector's edition, All-Photo issue of the Hotbox! We hope you enjoy it; it starts on page 6. All the regular features like LOASSB, the Event Calendar, and Ask GeepM will return next month. This month we are starting a new 12-page format to help save time and allow us to put out the Hotbox in a more timely fashion. Also, welcome our new Reviews and News Director, Nicholas Wilson! Have news or reviews? He's the guy to talk to! So till next month, see you trackside!

-Andy Inserra

## Thanks to this month's contributing editors:

Peter Maurath

Dave Honan

Nevin Byers

Corey Vernier

Michelle Tomlinson

Dane Watson

Lewis Ableidinger

Nick Olek

Charles Warczinsky

Andy Inserra

William Brown Jr.

Tim Vermande

## Editor of the Month:

With so much help from all corners of the TAMR no one person helped really make this issue possible. So all of you that helped are editors of the month, thanks for the submissions from all!

## Seven things overheard during the 2001 Ohio State Limited.

Discovered on the Antiques Roadshow by: Peter Maurath.

#7. I hear Bo the TAMR wonder dog will be signing autographs later

#6. Who's that nut with the shades and the big camera?

#5. I just can't get enough of that LOASSB; it rocks!

#4. I'm sorry, this is private railroad property.

#3. Do you want fries with that?

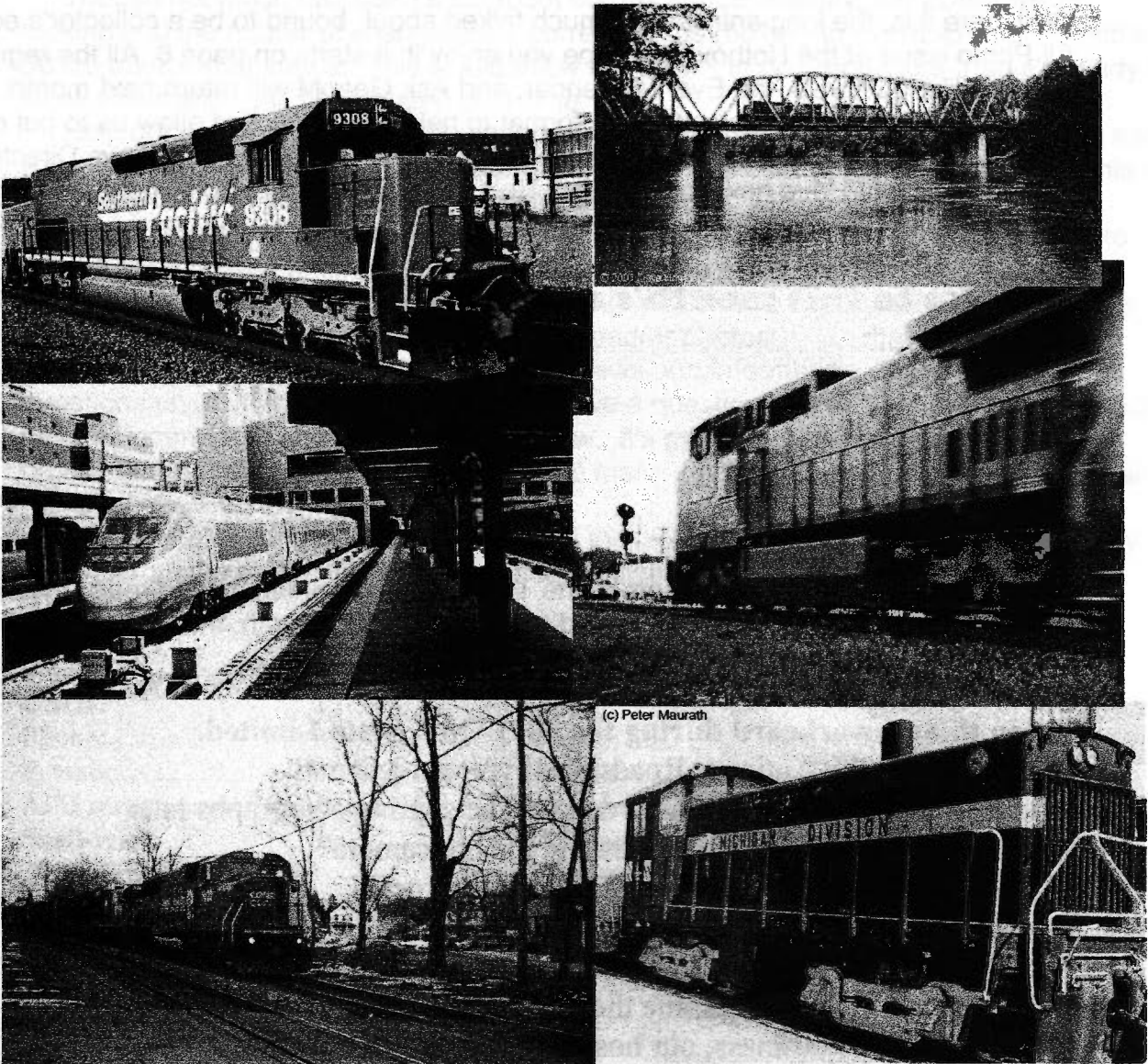
#2. Chris says it's okay, gimme the wire cutters.

#1. Next order of business; our hostile takeover of the NMRA.

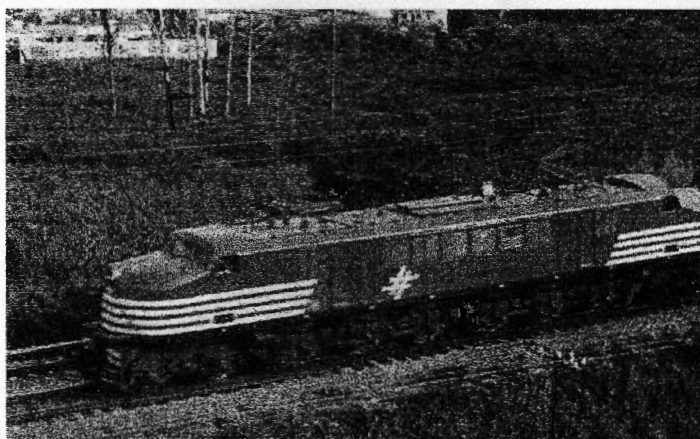
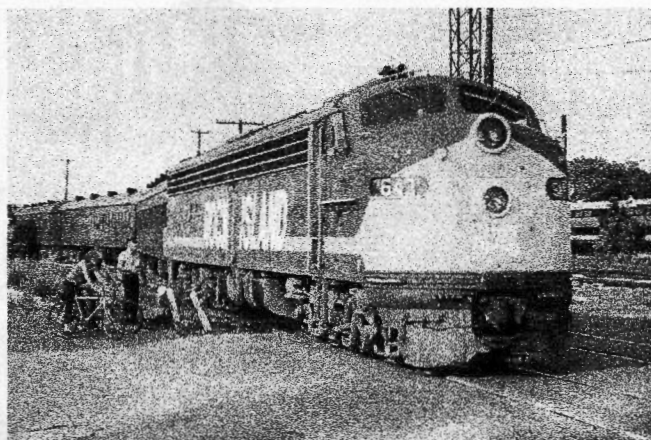


Hi Everyone! Welcome to the first ever All-Photo issue of the Hotbox! We hope you enjoy the great selection of photographs found here. If you don't see yours, don't fear; it isn't because we forgot it, we just couldn't fit it in. In fact, we had so many submissions that we are planning to repeat this in the winter. So be sure and be watching for them in future photo galleries and the next al photo issue, coming early next year! So for now, sit back, relax, and enjoy the show!

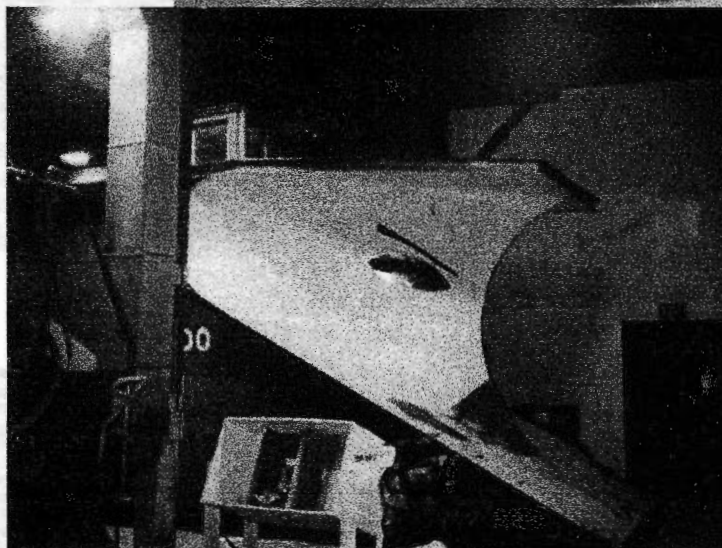
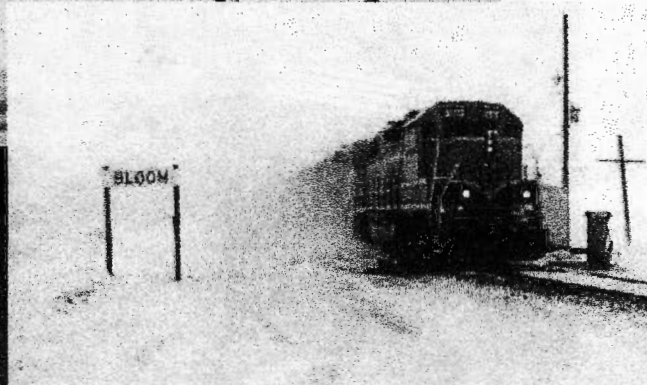
*Photo descriptions, clockwise from below.* SP Tunnel Motor 9308, Michelle Tomlinson photo. "One of the last railfanning trips I took this past school year yielded this photo of CSX 7874 and a 'Stealth' SD40-2 rushing a pig train northward through Clinton, Indiana. The bridge was originally constructed by the Chicago & Eastern Illinois and spans the Wabash River. CSX's St. Louis Line is flat and straight, with track speeds as high as 60mph in places." UP 9555 is on the point of a run through slop train to Indianapolis as it rushes through the high green at Altamont, IL, at twilight on May 12, 2001. Both are Dave Honan photos. Alco S6 864 sits at the Mad River and NKP Museum ,it is ex-Cargill (North Star Steel Division). Peter Maurath photo. A manifest train lead by Conrail SD60I 5533 and a B36-7 rumbles across Tenbroeck Ave in Kingston, NY. Seen in the Winter of '99 by William Brown, Jr. Acela train 2020 seen at Boston's South Station in Feb. 2001 by Charles Warczinsky.



A blast from the past! RI E9 643, PC GG1 4880, MKT SW1500, Soo F7-SD40-F7, Amtrak F40 302 at Kalamazoo (yes, it really exists in Michigan!), Southern SD45 3168 – high nose and all. And lastly is a special shot from Brazil, an electric much like those that were running on the New Haven in the 1930s. All photos by Tim Vermande







**Now-something to cool you off  
from this summer heat!  
Clockwise from above –**

**A mean looking Soo Russell plow parked inside the roundhouse.**

**LLPX SD38-2s and a BNSF SD40-2 are in charge of this eastbound at Glyndon, ND.**

**BNSF plow 972666, a classic Jordan spreader, is being shoved by GP30m 2802 and GP38-2 2333 on GN's secondary to St Cloud, it is now an unused line. Seen here at Averil, MN, 2-27-01, only a month before the line closes.**

**MNRR M636 71 sits in the snow on 3-16-01 waiting for the Empire Builder to clear the main line so it and their M630 and Australian C36-7 can get to work.**

**BNSF 2272 east kicks up the snow at Bloom, ND, on a warm winter day-Jan 30, '01.**

**MNRR C424m 63 at Midway Roundhouse during a blizzard in the Winter of 1997.**

**Third listed by Nick Olek, last by Andy Inserra, rest by Lewis Ableidinger.**





**From the land of 10,000 lakes!**  
**Counterclockwise from left:**  
**Northern Plains GP9 410, EX Soo**  
 in a nice modification of their red  
 colors. Accompanied by a pair of  
 GP35s. Thief River Falls, MN, 6-  
 28-00.

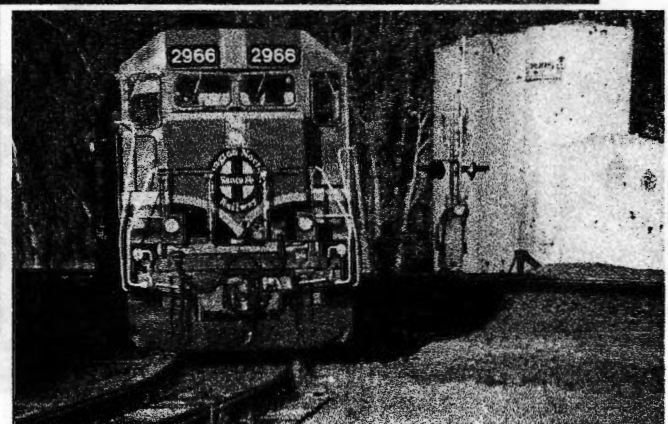
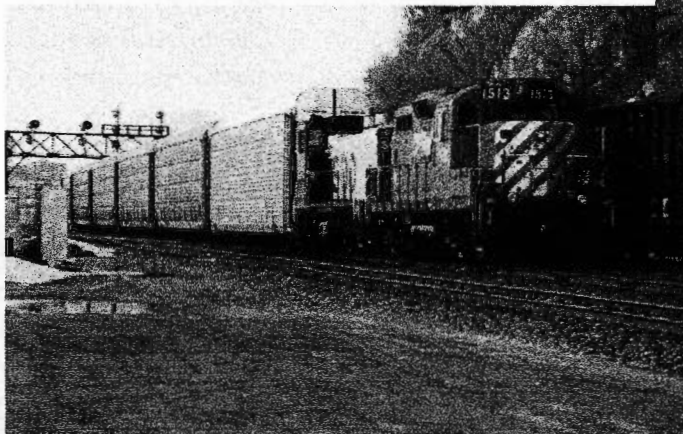
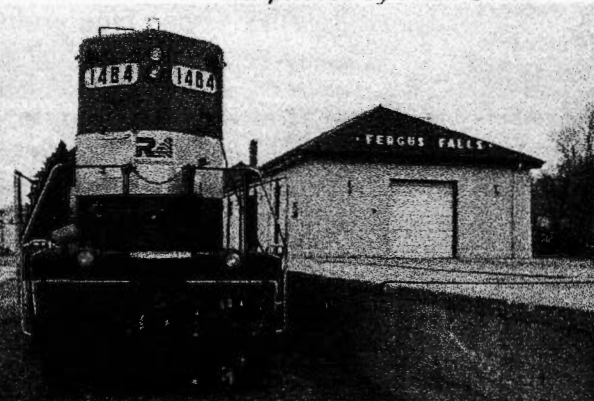
**GP39M 2833 with CSX 8888 and**  
 another BN SD40-2, Fargo 4-17-01.

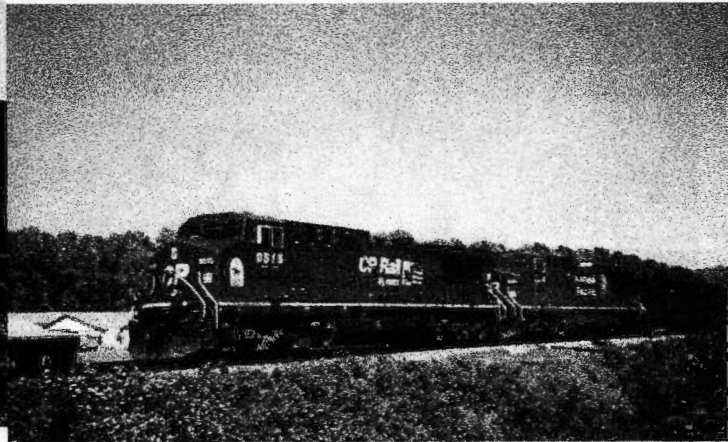
**CP SD40-2 6035 with an ex-NS**  
 SD40-2 and another SD40-2,  
 Detroit Lakes, 4-14-01.

**CP GP9m 1513 and a Soo**  
 MP15AC on the Ford Hauler in St  
 Paul on 3-16-01 during the Great  
 Plains Division's spring convention.  
**BNSF Geep 2933** seen in Glyndon,  
 MN, on 5-18-00.

**Rail America Geep 1484** seen at  
 the Fergus Falls, MN depot. It is  
 plugged in here, the true meaning of  
 tied up for the night! This is their  
 Minnesota Northern line, with  
 reporting marks MNN, they are  
 often confused with the Minnesota  
 Commercial in the Twin Cities wit  
 the reporting mark MNNR.

*All photos by Nick Olek.*





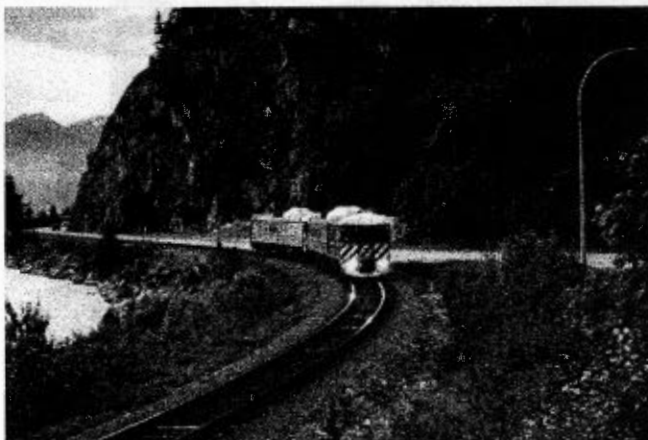
### ***North of the Border***

**Clockwise from above:**

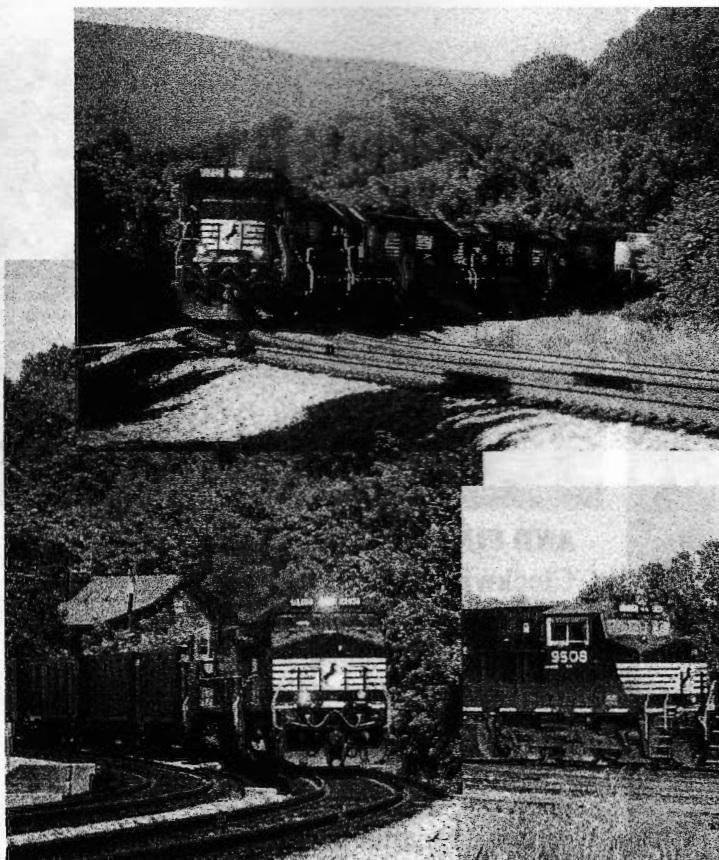
**Amtrak F59 468** provides the power for the Mount Baker International to get to Vancouver, BC. New Westminister, BC, Canada, June, 2000  
**A pair of RDCs** round the curve at Porteau Cove in May 2000 in Porteau, BC.

**CN 2541** shines in the afternoon sun in the Fraser Canyon, at a division point called Boston Bar, BC. July 2000  
**CP AC44's** race an empty coal train through BC.

**The red in this GP9** is great in the open blue prairie skies and the pond reflection just makes it a great photo. E&N GP38s seen in July 1999 at Huntington, BC –just feet away from the American border. The units were repainted in 2000 but are still wearing a green coat. *All by Dane Watson*







#### OUT EAST...

#### Clockwise from Above

In a little known place called Wabum, Virginia, just west of Roanoke, a westbound empty hopper train shatters the near perfect silence.

A couple miles west of Roanoke is Singer, VA. NS D8-40C #8712 and 5 EMD's swing around a curve in impressive fashion.

NS SD70M #2590 leading 350 into Raleigh NC.

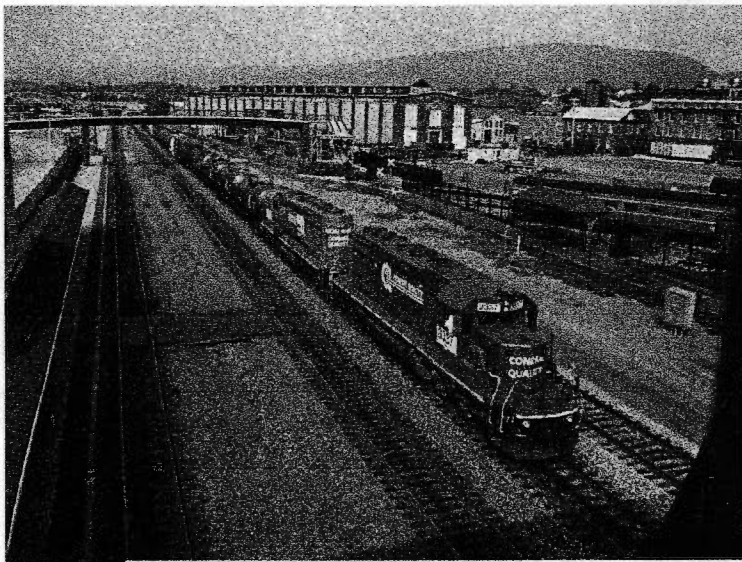
A rebuilt NS GP38-2 #5506 shows off it's new lines in Raleigh NC.

*All by Corey Vernier*

Conrail 6916 merrily smokes away as it works Drill 2 at Selkirk's East End. The U23Cs were retired a number of years ago, to the dismay of many railfans.

CSXT 7705 leads two SD40-2s (the second a CEFX leaser) under the old CE&I coal tower in Sullivan, IN, on a sunny March 10, 2001. Note the two startled birds! *Both by Dave Honan.*





### **AND FINALLY...**

**Clockwise from the top left:**

A couple of SD40-2 helpers slow an Eastbound off Horseshoe Curve.

The Three Rivers makes a brief stop in Huntingdon, Pa.

LMS C40-8W 0724 passing through Altoona, Pa after descending Horseshoe Curve.

An NS former CR SD60 leads the Triple Crown Roadrailer through Tyrone, Pa.

The late evening sun glimmers on the rails by Hunt Tower in Huntingdon, Pa.

A CR C40-8W leads an empty coal train past the Amtrak platform in Altoona, Pa.

*All photos on this page are by Nevin Bvers*

