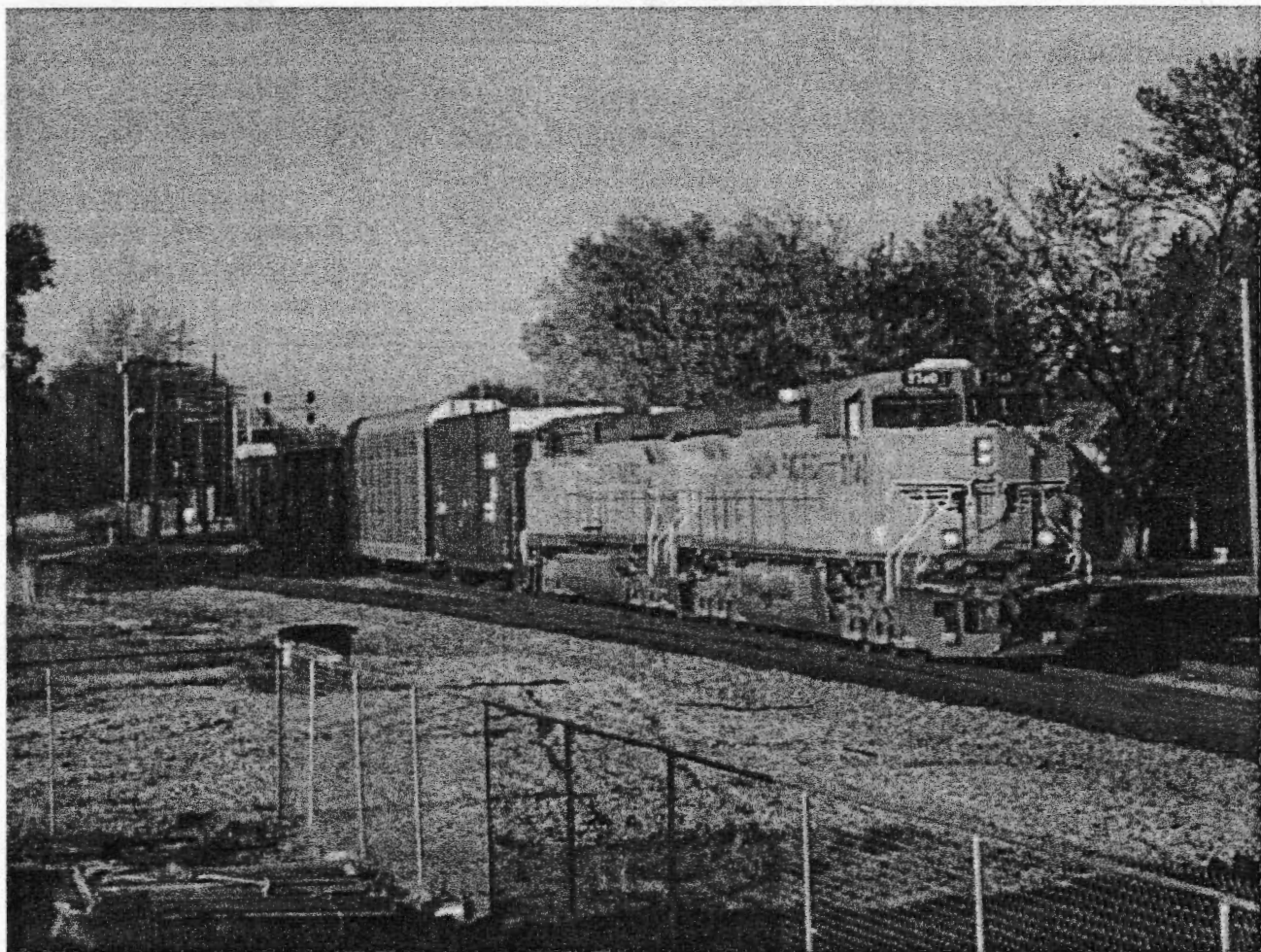


THE HOTBOX

Youth Model Railroading at its Finest!

**May 2001
Issue #346**

ISSN 1093-622X



**This Month:
Twice the LOASSB!
Thunder Ridge Railroad
And much more!**

**THE OFFICIAL PUBLICATION OF
THE TEEN ASSOCIATION OF MODEL RAILROADERS**

The HotBox

May 2001
Issue 346

Send Articles to:
Charles Warczinsky

Editor:
Charles Warczinsky
charleswarczinsky@mail.com

Layout Design Artist:
Andy Inserra
Andy_Inserra@tamr.org

Contributions!

We always need contributions in all forms. Please send the following in if you wish for the staff to consider for an upcoming issue of *The Hotbox*.

Feature Articles:

This is what we really need. They can be from a half page to two pages typed on anything related to railroading, railfanning, model railroading, you get the idea. Accompanying pictures are also welcome.

Columns:

Another thing we can always use! If you wish to start one, please drop us a line. And if you like a current column, please let the staff know, we like the feedback.

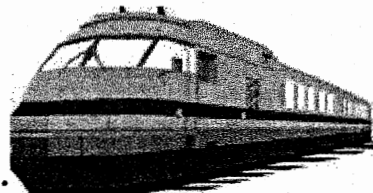
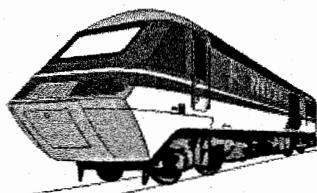
Photos and Drawings:

Do you have great pictures collecting dust? Railroading cartoons just sitting around? Drawings just waiting to be great works of art? Well send them in for consideration by us! Photos should be 3in x 4in minimum. Artwork should be on plain white paper with black ink.

Questions?

Ask the editor for more info.

On the Cover: Brand-new UP AC44CTEs 5740 and 5718 slide past Haley Tower at sunset on a cloudless April 29, 2001. What makes the AC44CTE unique is its ability to decrease its tractive output, allowing its use as an end-train distributed-power helper in manifest service. Dave Honan photo.
(Inset) Minnesota Northern 1484, a GP9, is on the head of this southbound Otter Tail Valley train near Baker, MN, on August 4, 2000. MNN and OTV were once both owned by RailAmerica, but MNN has since been sold to a private owner. Lewis Ableidinger photo.



Inside this Issue:

Features:

- | | |
|------------------------------|---------|
| • The Last Train | Page 6 |
| • Thunder Ridge Railroad | Page 13 |
| • Ohio State Limited-Update! | Page 14 |
| • Photo Gallery | Page 15 |

Columns:

- | | |
|---|--------|
| • Top 7 | Page 5 |
| • LOASSB | Page 8 |
| • LOASSB (no, you're not seeing double) | Page 9 |

Departments:

- | | |
|--|---------|
| • Directory | Page 3 |
| • From the Tower | Page 4 |
| • A word from the Editor | Page 5 |
| • A word from the Layout Design Artist | Page 5 |
| • TAMR on the Web | Page 7 |
| • Events Calender | Page 10 |



Please Read and Recycle

Thanks to rrhistorical.com for some of the railway clipart.

The TAMR is a non-profit organization created to promote, foster, and encourage young persons in the hobby of model railroading, the activity of railfanning, and the preservation of the history, science and technology thereof.

Membership to the TAMR includes an eleven issue subscription to the *Hotbox*, the annual directory of members, quarterly regional newsletters and an invitation to participate in all TAMR events. The available membership categories are as follows:

Regulars (under 21).....\$15
Associate (21 and over)....\$20
International (outside US)..\$15
Sustaining.....\$20

Please send membership to:
Hans Raab, TAMR Treasurer,

TAMR DIRECTORY

Your Hotbox 2001 Crew!

Hotbox Editor---- Charles Warczinsky
charleswarczinsky@mail.com

Layout Design Artist –

Andy Inserra

Andy_Inserra@tamr.org

Hotbox Co-Editor---- Andrew Matarazzo

TAMRnymets@aol.com

Contributing Editors –See page 5

Other Really Important People

President- Chris Burchett

president@tamr.org

Vice President- Joel Durfee

vice_president@tamr.org

Treasurer- Hans Raab

treasurer@tamr.org

Auditor - Andy Inserra

Andy_Inserra@tamr.org

TAMR Gov't Advisor- Brad Beaubien

Pivot Pin---- Tim Vermande

pivotpin@tamr.org

Promotion Manager---- Andrew Matarazzo

TAMRnymets@aol.com

Assistant Promo Mgr---- Joe Bohannon

GeepM@fcmail.com

Car Exchange

Doug Engler

Joe Bohannon

Department of Advisors

Chris Wagner

TAMRadvisor@hotmail.com

2001 TAMR National Convention Director

Chris Burchett [osl01@hotmail.com]

2002 TAMR National Convention Director

Andrew Matarazzo

TAMRnymets@aol.com

Video Exchange

TAMRvideo@aol.com

Lewis Ableidinger

Chris Burchett

Newton Vezina

Representatives and more

Northeast Region Rep.-Andrew Sabens

TAMR13@aol.com

Central Region Rep.-Louis Granato III

centralregion@tamr.org

Southern Region Rep.- Josh Trower

gg1_4935@hotmail.com

Western Region Rep.- Joseph Suarez

CascadeDash944CW@rrmail.com

Canadian/International Region Rep.-

Dane Nicholson

TAMR2860@Canada.com

One Mile Div. [MA]

Barry Simmons

bsimmons@capecod.net

Willie Roberge, Doug Engler

NY/NJ Metro Div.

Andrew Matarazzo

TAMRnymets@aol.com

Dimitros Fradelakis

Metallicarox54@hotmail.com

Great Plains Div. [ND, SD, MN]

Lewis Ableidinger

Soo201@hotmail.com

Golden Empire Div. [CA]-

Joe Bohannon

GeepM@fcmail.com

Heartland Div. [MO]

Joel Durfee

vicepresident@tamr.org

Catskill Mtn. Div. [NY]

Dave Mason

TAMR53@juno.com

Boston & Albany Div. [MA.]

Adam Sullivan

TAMR30@aol.com

North Wind Div. [BC]

Dane Nicholson

TAMR2860@aol.com

Air Line Div. [NC]

Josh Trower

Archivist

Mike Acree

TAMRMIKEA@aol.com

Webmaster

www.tamr.org

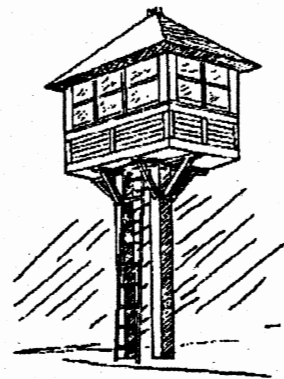
Dane Watson

From the Tower

By **Chris Burchett** and **Joel Durfee**

President

Vice President



Hello everyone! I apologize for the national convention registration form not being included in the *Hotbox* "convention issue." You all should be getting it in a separate mailing here very soon.

I would, at this time, like to recognize our most recent member. Say hello to Cutler Sheridan of Marietta, GA! Welcome aboard, Cutler!! I would also like to apologize to Spencer Barlow. In the last issue, it was stated that he is from Halley, New York. Actually, he is from Holley, New York.

We recently lost our Western Region Representative, Joseph Suarez. His resignation was effective as of May 1st. If you, or anyone you know would like to become the new Western Region Rep., please let me know. Remember, you must live within the Western Region to become that specific representative. Duties include: producing the regional newsletter, the *Daylight*, quarterly; and actively participating in Congress (a.k.a.- Board of Directors). If interested, please contact me. Thank you so much for your help!

Not much else going on in the group at the moment except for many conventions planned, in addition to the entire organization gearing up for this year's national convention in Ohio. If you aren't able to attend one of the conventions listed on the "Events" page, I encourage you to plan a convention of your own. They're really not as hard as they might seem. All that is needed is a railfanning location, and, if possible, a layout tour. That's about it. And conventions aren't required to be three or more days long. A simple day of railfanning somewhere is just as good!

Once again, I encourage you to support your TAMR publications. If all you can submit is a photograph or train drawing, hey, that is gladly accepted. Just one photo can go quite a ways. Have a railfanning trip you took? Have a modeling tip or trick you know of? Write it down and send it in! And remember to not only submit items to the *Hotbox*, but also support your regional newsletter. They need quite a bit of help as well. So I encourage you to submit at least one thing to either the *Hotbox*, your regional newsletter, or even both if you feel ambitious enough.

If you have any questions, comments, suggestions, ideas, etc., please let me know! I want to hear from you, the member, on how to make this organization great! This is your organization as well, so I want to hear from you. Or if you would just like to say hello and chat awhile, I'd be glad to hear from you!

That's it for this month! From the tower, this is Chris Burchett, signing off.

Chris:

Phone:

E-mail: president@tamr.org

AIM screen name: TAMRprez33

Snail-mail:

Joel:

Phone:

E-mail:

vice_president@tamr.org

AIM screen name: TAMRvpJoel

Snail-mail:

A Word from the Editor

Hi everyone, I guess I've got an editorial now. Not much is new this month on my end, just the same old- WE NEED CONTRIBUTIONS! Also, I've had several people say good job since the last Hotbox came out. I really can't take this credit, because it all belongs to Andy.

-Charles W

A word from the Layout Design Artist

Well, the first issue of the new and improved *Hotbox* went out and didn't explode, what an accomplishment! Thanks to all of you who sent us compliments on the new look, we're really glad you like it. This month we have a special thing, LOASSB running back to back editions. Yes, that's right folks, Peter and the LOASSB have come back from vacation and are putting in over time! Actually, there is a guest writer for one (but don't let that take away from Peter's glory!). Be sure to check out the great art work on page 13 by Joe Bohannon. Also, we are preparing for the first ever *Hotbox* photo issue. Please flip to page 14 for all of the details, we hope you'll all participate! Till next month, see you trackside!

-Andy Inserra

Thanks to this month's contributing editors:

Lewis Ableidinger

Dave Honan

Nick Wilson

Peter Maurath

Joe Bohannon

Chris Burchett

Corey Vernier

Editor of the Month:

This would have to go to Peter Maurath and his never ending help with supplying regular columns not only to the *Hotbox* but the Central Region's newsletter as well. His great sense of humor and ingenious ways to help the broke modeler save a buck or two have been appreciated by all of us for years. Thanks for all of the hard work Peter!

Top Seven reasons to come to the 2001 Ohio Limited.

Seen on a bumper sticker on the NJ turnpikeby: Peter Maurath

#7. Bo needs lots of people to scratch his belly.

#6. Valet parking.

#5. Because Logan is one big party town.

#4. "The Burchett house is due for a paint job."

#3. \$4.99 all you can eat buffet.

#2. Required by law.

#1. BOD meeting always turns into a knock-down, drag-out brawl, that's fun for the whole family.

The Last Train

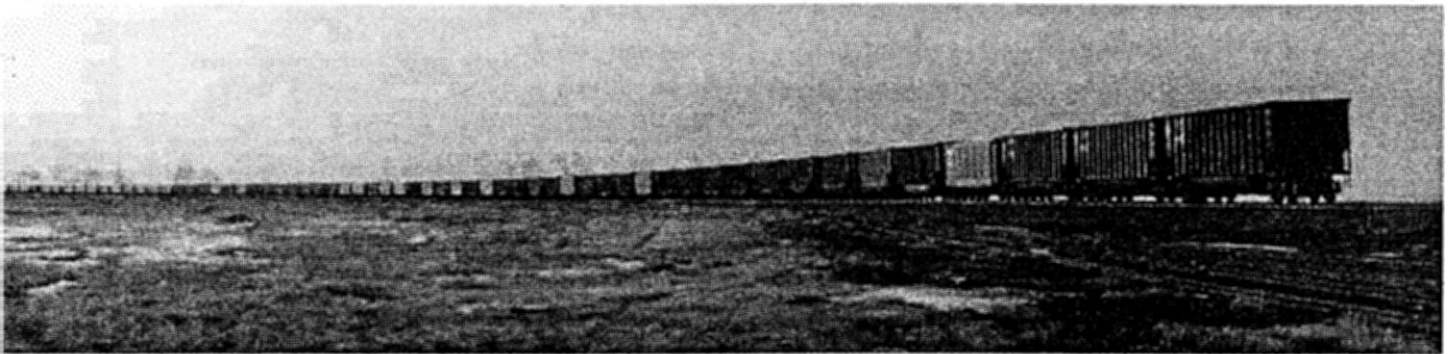
Corey Vernier

**The night takes root; mist seeps around all kind.
Two rails yield not a sign of what I wait;
the wait; the wait extends beyond my mind.
Dusk shines and glints off threads of steel; it's late.**

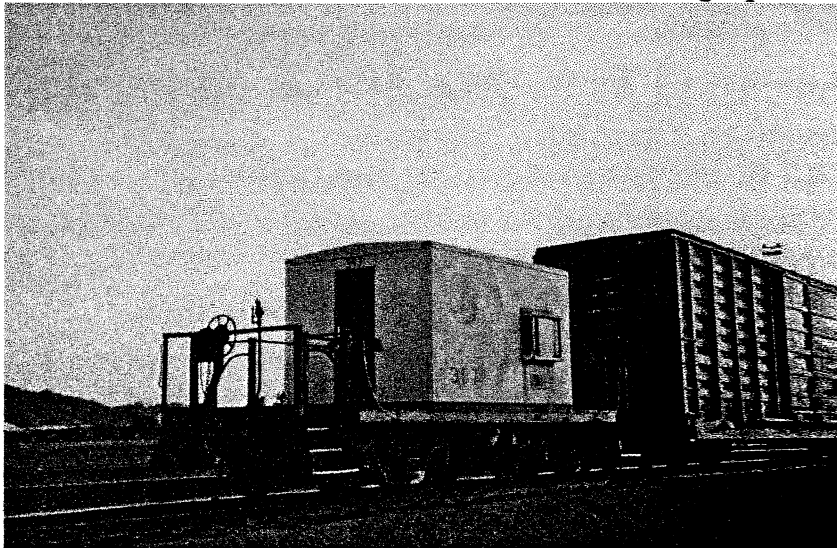
**But now, a sound, a purring comes to hand.
Afar, at first, and moving closer fast.
The chant of diesels floats across the land,
and then a headlight rounds the curve; at last.**

**Its light is bright, the earth begins to quake.
I wave my arm; a horn blast fills the dawn.
The tempest hits; and senses slammed awake.
The sound; the fury; but then, it's gone.**

**A shattered silence sets for one last time
because today, for good, they close the line.**



The end of an empty westbound BNSF Powder River coal train is just clearing the town of McKenzie, ND, as it heads off to the badlands. Lewis Ableidinger photo



KCS transfer caboose #397 heads off into the sunset at their Front Street yard in Kansas City. Andy Inserra photo

TAMR ON THE WEB

What could be better than free stuff?

The TAMR has an active presence on the Internet, and we hope our members will take advantage of what we have to offer. All of this is included in your membership, so it is free, yes that's right, it won't cost you a dime!

First is our own site, www.tamr.org. Here you can find out what's going on and see pictures from conventions. If you have a picture to add, or would like your own web site linked, contact us. We are also always looking for members who would like to help with the site (no experience is required). If you would like to have your own page at the site, we'll help you with that, too. For more information, contact webmaster@tamr.org.

Second is our e-mail list. The list does not replace the *Hotbox*, but does provide a fun way for members to get the latest news and make new friends. You can join the list in several ways:

- send a blank e-mail to TAMR-subscribe@egroups.com
- on the web, go to <http://www.egroups.com/group/TAMR>. (This is most useful if you are already registered with E-groups or Yahoo).
- send an e-mail to pivotpin@tamr.org and request an invitation.

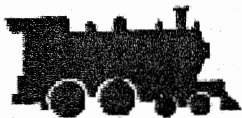
Note: Yahoo has recently bought E-groups. Most URL's will take you to a Yahoo page. Until things settle down, you may experience some difficulty using the site. Contact the Pivot Pin if you have a problem.

Yahoo also has a "files" area where you can find the TAMR logo, some more pictures, and other information. Note: the list is only open to TAMR members, although a few exceptions occur for former members or industry contacts.

Third, you can have an e-mail address "@tamr.org." This is a forwarding address, so the e-mail is sent to another address that you already have. (It is possible to get a POP or stand-alone account, but there is a charge associated with this). For information, contact treasurer@tamr.org.

Check us out on-line www.tamr.org

And while on the web, stop by our sponsor's site!



J AND J HOBBIES

www.ho-only.com

They give discounts to all TAMR members!



Layout on A Shoestring Budget

Conducted by: Peter Maurath

Modernizing Structuring

Part VII, Storefront facelift 2

Ready to serve in minutes it's LOASSB! This month we complete our modernization of a DPM storefront with some final trim and awnings. To keep everything straight I'll label our trim pieces with letters of the alphabet so you, and I can keep track. Check the figures below for the proper labels.

SOME MORE TRIM

We start off with filling the gap above the windows between part B. Using the same IB (illustration/matte board) as before, measure the distance between your verticals (B) and the height you'll need to cover the first floor trim, but not too high to cover the second story windows (Fig. 1), these become part C. Glue into place, and let dry.

FINAL TRIM

Next we'll need to fill the gap around the window openings between the new trim and original facade underneath. Using cardstock (cereal box cardboard) measure the gaps around your window and door openings, cut and glue them into place. You should have four sections around each window and three around each door.

AWNINGS

We complete our new facade with small awnings above each window. These awning's construction will utilize IB's paper layers. First cut a long section at least a few inches in length and no more than a 1/2" wide. Next, using a hobby knife or even your fingernail carefully peel away the top most layer of the IB. You should get a piece no more thick than a heavy sheet of paper. To make the awnings simply measure the length of part C and cut your thin piece of IB to fit. Glue to the top of part C (you can also go above the window if you like) at a slight angle, and let dry.

THE BIG FINALE

Now your ready to finish construction of your kit. You can paint the facade any choice of colors. My kit for example featured: Part A, B=white, Part C=beige, Part D=dark green. Complete it as you would a standard kit (windows, other walls, ect.), add some signs and you DPM kit is ready to face the 21st century. That raps-up this longwinded series, hope you got some useful tips out of it. Join me next month when LOASSB will feature guest author Andy Inserra, helping our layout towns control they're waste management problems.

FIGURE ONE

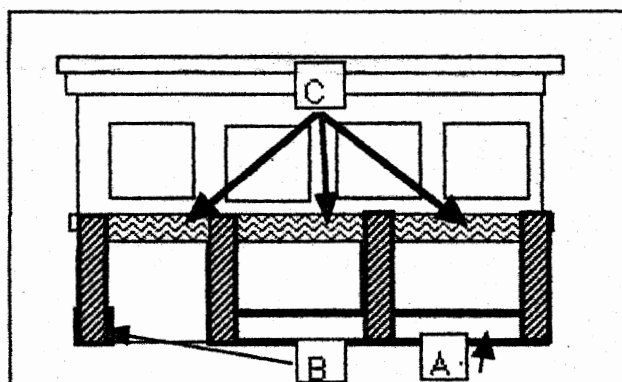
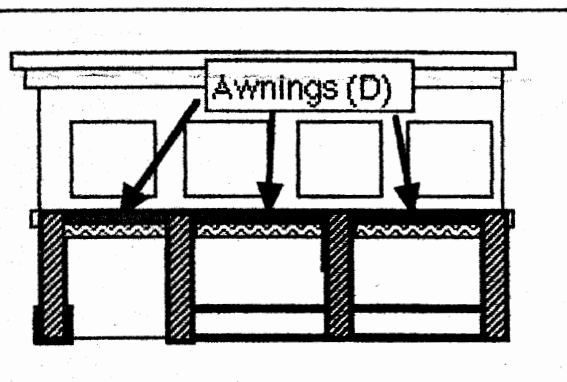


FIGURE TWO



Layout on A Shoestring Budget Conducted by: Peter Maurath

Keeping Your Fair City Beautiful (as found in a dumpster by Andy Inserra)

(Note: this is not a trick, LOASSB is appearing twice this issue since it was on vacation last issue. We hope you enjoy this extra dose of cheap entertainment. In addition, guest writer Andy Inserra is subbing in for Peter on this edition)

It's time to clean up your layout and you know what that means, It's time to take out the trash! Yes, that's right folks, today we're building garbage cans and recycling bins. These are critical to keeping towns clean and can be found curbside all across the country on local collection days. So lets get to the dirty work.

Garbage Cans

These cans aren't your usual run-of-the-mill round metal garbage cans that can be made from a dowel but the large rectangular 95-gallon company distributed cans (this is the most common design of these size cans, some cities use slightly different ones). We'll start with a simple $\frac{1}{2}$ " * $\frac{1}{2}$ " stick of wood (about \$1.25 for a two foot long piece at your local hardware store). Cut off pieces that are $\frac{1}{4}$ " in length. I used a saw attachment to an X-ACTO knife, but any old saw should do the trick. Next, measure $\frac{1}{16}$ " in from one long side and $\frac{3}{8}$ " up from the bottom (square) side. Remove this wood. I recommend using a small saw but it is possible to do it with sand paper too. The hardest part is now behind us! Next, just sand slight angles into the top as shown in Figure 1 to create the lid. Finally, sand a little off each edge on the main body (only from the bottom up to the "ledge" on the can) to give your trashcan an octagonal body. The bottom view is also shown in Figure 1. Now it is ready for painting (we'll get to that in a minute).

Recycling Bins

These are rather simple to create. Take that long stick of wood we started with and saw off another $\frac{1}{4}$ " piece. Sand one long side down so the bin is now $\frac{1}{8}$ " wide. Sand the other long side so it is vertically $\frac{3}{16}$ " tall. Refer to Figure 2 to see the dimensions and how it should look. That's it for the recycling bin, that wasn't too painful now, was it?

Painting

This is where your creations lose their wood look and begin to look like their heavy-duty plastic prototypes. Most garbage haulers like to have their cans in their distinctive corporate colors. For example, BFI uses royal blue, Waste Management has green or brown cans, and the numerous local companies all across the country have their own colors. If you're modeling a big city with the garbage collecting being done by the public works then the cans should all be a unified color, black, gray, or brown are popular for this. As for the recycling bins, most are usually green or blue making them look more environmentally friendly.

Now maybe you're thinking-how will my little people move this to the curb since they have no wheels? Well, arm yourself with a Sharpie marker; we're going in on this one! Grab your can by the top and marker in two neat little wheels on the side towards the back. So there you go, for \$1.25 you can make so many trashcans and recycling bins your city will be clean forever. And if you catch any of those little people on your layout tossing their trash on the ground you'll finally have an excuse to make that jail you've always wanted to build!

Figure 1

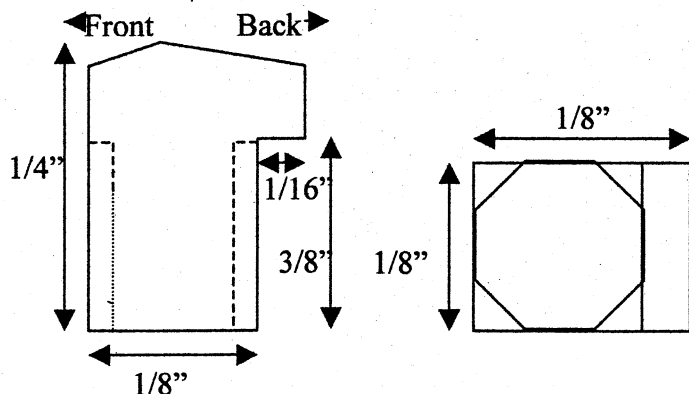
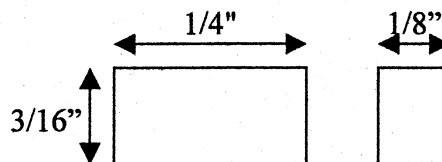


Figure 2



TAMR Events Calendar

A bumper crop of activities this year!

JUNE 22-24, 2001 (North Carolina) TAMR Air Line Division tentative dates for the 3rd annual Southern Region Summer Convention! Operating session at the awesome HO scale Monon Railroad. Get ready for the best railroading at the best locations in the South! For more information, contact: Josh Trower, (Southern Region Rep) E-mail: gg1_4935@hotmail.com

JUNE 25-27, 2001 (North Dakota) Dates for the annual Great Plains Summer Convention, The North Coast Ltd. will be announced. Planned activities include a possible visit to Bismarck, ND for plenty of BNSF railfanning, trolley rides, and possible layout tours. Monday activities include riding the McHenry Loop Railroad, railfanning, and a visit to the state railroad museum. For more information, contact: Lewis Ableidinger. E-mail: soo201@hotmail.com

JUNE 24, 2001 (North Vancouver, British Columbia, Canada) Summer Steam. We will be doing a usual IR convention, riding the rails behind the 3716 Consolidation (POCO) engine. This convention will be a run of the Jingle Bell Express. For more information, contact: Dane Nicholson, E-mail: TAMR2860@Canada.com

JULY 9-14, 2001 (Ohio), 2001, TAMR National Convention, The Ohio State Limited will be hosted by the very active Central Region! Chris, Louis, and the 2001 national convention committee has planned an excellent railfanning and model railroading experience! Get ready for a super convention this summer! Three layout tours are already official with more on the way! Mark your calendars now!! Check out progress on the web at <http://www.tamr.org/osl01>. For more information, Contact: National Convention Director, Chris Burchett, E-mail: osl01@hotmail.com.

JULY 16-20, 2001 (Western New York) The TAMR "Western New York Division" will be hosting their first convention this summer! The 5 day event will feature a variety of layout tours, an operating session at the Rochester Institute of Technology Club layout. Members are invited to bring HO scale equipment to the layout. (Magnetic couplers only! No "horn hooks") Get ready to railfan some of the best locations in the Buffalo and Rochester areas! Railroad and yard tours are already in the planning stages. For more information, contact: Nicholas Wilson

AUGUST 9-14, 2001 (New Jersey) TAMR New York/ New Jersey Metro Division 4th annual Summer Convention. Activities include a TAMR table at the Greenberg Model Railroad show (New Jersey Expo Center, Edison, NJ). Visit the variety of model railroads, ride the train and railfan along the NEC, movies, pizza, pool party, and plenty of the traditional NJ post convention activities! For more information, contact: Andrew Matarazzo, E-mail: TAMRnymets@aol.com

NOVEMBER 10 and 11, 2001 (British Columbia, Canada) TRAINS 2001 will once again beheld at the TRAINS show, held on November 10th and 11th. Bring money for new toys and food! We will also again run the Digitrax DCC display. This was the best convention of 2000; so don't miss out this year. Please contact Dane Nicholson, or E-mail: TAMR2860@Canada.com by September if you plan to attend.

NOVEMBER 10 and 11, 2001 (British Columbia, Canada) TRAINS 2001 will once again be held at the TRAINS show, held on November 10th and 11th. Bring money for new toys and food! We will also again run the Digitrax DCC display. This was the best convention of 2000; so don't miss out this year. Please contact Dane Nicholson, or E-mail: TAMR2860@Canada.com by September if you plan to attend.

NOVEMBER 2001 (New Jersey) TAMR New York/ New Jersey Metro Division Fall convention! Activities include a TAMR table at the Greenberg Model Railroad show (New Jersey Expo Center, Edison, NJ), visit a variety of member model railroads, railfan along the NEC, pizza party, train videos, and more! For more information, contact: Andrew Matarazzo, E-mail: TAMRnymets@aol.com

And for those of you that really plan ahead...

FEBRUARY 1-3, 2002 (West Springfield, Mass) Annual TAMR Winter Convention! This huge event will be held in conjunction with the largest railroad hobby show in the Northeast! (5 1/2 acres of trains under the roofs of three large buildings) TAMR table and layouts at the show. Contests, clinics, "Beach Party," and more! Another awesome multi-region event is being planned. Ideas and suggestions are definitely welcomed! We also welcome any TAMR member who would like to join the Winter Convention Committee.

Mark your calendars now! For more information, contact: Adam Sullivan, E-mail: TAMR30@yahoo.com or Newton Vezina, E-mail: TAMR19@aol.com or call

JULY 10-18, 2002 (New Jersey / New York) The Broadway Limited 2002. With under a year and 4 months away, the 2002 TAMR National Convention is scheduled to be held in New York and New Jersey, hosted by one of the TAMR's fastest growing, and active divisions! Get ready for the best model railroading and railfanning in New York and New Jersey! For more information, contact The Drew Crew, 2002 Andrew Matarazzo, Convention Director. E-mail: TAMRnymets@aol.com and Northeast Region Rep., Andrew Sabens, (Convention Director) E-mail: TAMR13@aol.com



Nick Olek, Joe Olek, Andy Inserra, Lewis Ableidinger, and Richard Krebes take a break from railfanning at Hoffman Ave in St Paul MN on March 16, 2001

TAMR WNY Division

Convention



**Located In
Brockport, New York**

Monday, July 16 at 10:00 AM to Friday, July 20 At 8:00 PM

**All Members Attending This Convention Will Have To Either Ride With Newton Vezina
Or Follow Him To This Convention. If You Attend This Convention, You Will Only Be
Able To Attend One Day Of The Post Convention In West Virginia.**

**Engine House Tours, Yard Tours, Layout Tours, Hobby Shop Visits, Lots Of Railfanning,
And A Day Off From Trains Including Model Rockets, Ping Pong, Pool Or Billiards,
Football, And Laser Tag.**

**Contact Nicholas Wilson At For More Information. North East Region
Members Only, Please. Also, No More Than 5 People May Sign Up For This Convention.**

Thunder Ridge Railroad

Artwork and map-courtesy of Joe Bohannon



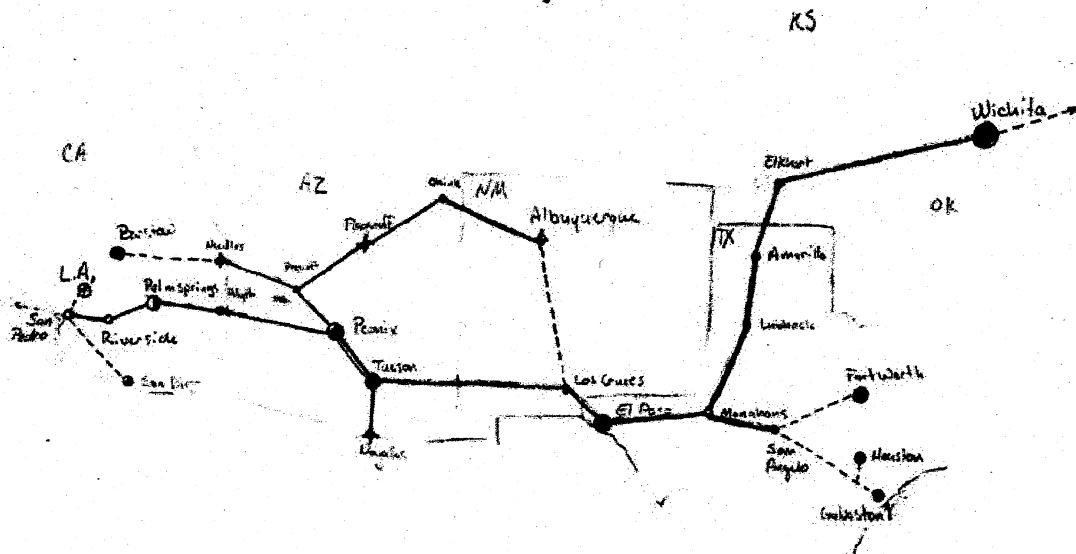
Thunder Ridge Corp.

Thunder Ridge RR - TRRR

El Paso Panhandle - EPP

San Pedro Eastern - SPE

-----> All Trackage Rights are
Contracts by BNSF (Formerly AT&SF)



Ohio State Limited-Update!

Chris Burchett

A change has occurred in the "OSL" itinerary!! Instead of driving to Fostoria on Tuesday morning, we will be spending Monday night at Fostoria. So when we leave Attica Junction (Siam), we will be traveling straight to Fostoria and spending the night. This will save wear and tear on the vehicles (and drivers!), and will also afford more railfanning time. I apologize for any inconvenience this may have caused.

Listed below are two of the best-known hotels in Fostoria. Also listed below is the hotel for Cincinnati. Of course, there are many more hotels in the Cincinnati area, so if you don't want to stay at the Red Roof, call up a travel agency near you. All prices are for two double beds. Again, do **not** send hotel money to the convention director, but to the hotel you're staying at. Keep in mind that prices are subject to change at any moment.

Looking forward to seeing all of you here in Ohio at the *Ohio State Limited 2001!*

Days Inn (Fostoria):
(419)435-6511 - \$61.20

Holiday Inn Express (Fostoria):
(419)436-3600 - \$64.00

**Red Roof Inn (Blue Ash /
Cincinnati):**
(513)793-8811 - \$55.00

Calling all Photographers!

We need your railroading photos for the first annual *Hotbox* photo issue!

They can be of any railway topic (modeling, railfanning, structures, employees, you get the idea). Send them to the editor and/or the layout design artist via either snail mail or email. Please, no slides, as we can't reprint those at this time. Now maybe you're saying, "My work isn't good enough" or "I'll never get published." Well this is your chance! It doesn't

matter if you've submitted dozens of photos before or have never submitted a single one; send in your favorites! All will be considered for use. The deadline for sending them in is July 15th, 2001- don't miss out on being a part of this first ever, landmark, smash hit, collector's issue that will be worth millions on eBay someday. Charles and Andy are looking forward to seeing your work.

Photo Gallery



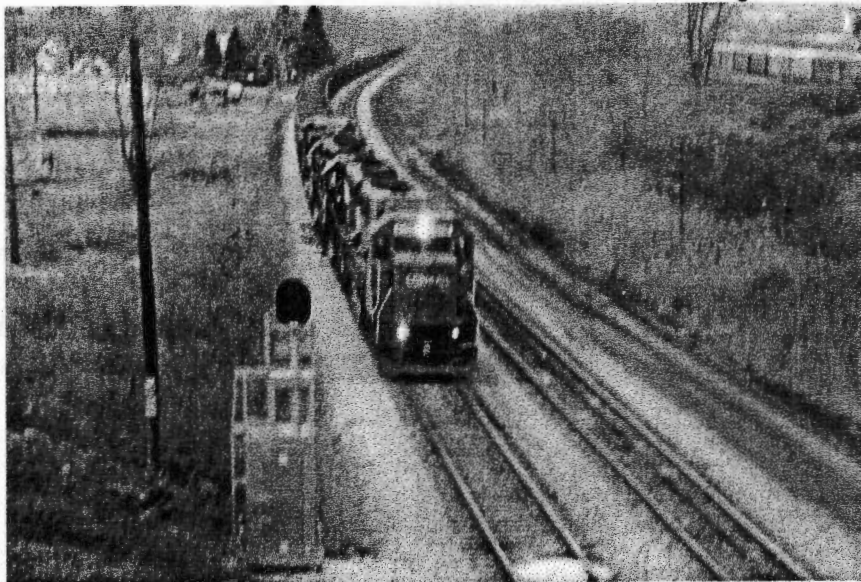
CSX C60ACs 659
& 684 head up hot
stack train L115
(Cleveland-St
Louis)
at Haley Tower on
the IB Line. Terre
Haute, IN, April 02,
2001. Dave Honan
photo.

Guilford GP40-2W
and GP40 309 lay
over at Rotterdam Jct.,
NY, on Friday April
13, 2001. The 518
was purchased from
Canadian National at
the end of 2000 and,
although recently
repainted into GRS
paint, shows signs of
hard work. Dave
Honan photo.



El Bandito! Soo
2041 still wears
the Milwaukee
Road "Bandit"
paint scheme;
it is seen here
kicking cars in
CP's Latta Yard
(Jasonville, IN)
on February
04, 2001. Dave
Honan photo.

Photo Gallery



This NS Northbound is led by an ex-Conrail SD50, a NS SD50, a NS SD40-2, and a NS C40-9W is about to meet a southbound van train on February 27, 2000. Nick Wilson photo

CSX AC60CW #659 & 684 cruise south past Haley Tower on Q129 (Chicago-Atlanta) on a sunny April 24, 2001. Haley Tower is owned by the Haley Tower Historical & Technical Society of Terre Haute, IN, and is open to the public May-Oct, Sat & Sun 1-4pm. Dave Honan photo.



CP has its Golden Rat...err, Beaver; Indiana Southern Railroad simply is golden. ISRR GP40 4051 idles just north of Switz City, IN late on February 04, 2001. Dave Honan photo.