

# The Wayfreight

FALL 1989

Issue 44 / 6



# LAYOUT PLANNING CONTEST!

The Wayfreight staff is proud to present the Central Region/ Geneva Southern Layout Planning Contest. We hope that

many of you will take advantage of this opportunity to get involved, have some fun, and help out a fellow member. Besides,

there are PRIZES involved. There, now THAT got your attention! Yes, prizes were unsuspectingly donated by the William K. Walthers Company for our little contest.

We here at the Wayfreight felt that it would probably take "material" goods to get most of you involved. After all, there are more important things to do, like watching Music-Television. Those of us not fortunate enough to have cable TV end up being Editors! OK, so I'm just kidding. But after all, being a little less than serious is what makes editing (and hopefully reading) the Wayfreight fun. However, I really AM deprived of M-TV! Anyway, take a look at the Geneva Southern material, and draw up a plan. It can be as simple or detailed as you want. Electronics (control system) don't have to be included, but can be. You can simply draw up a track plan if you like.

Give it a try! Design your dream layout. You might even get ideas for your own layout from this project.

Ex- Wayfreight editor Gerry Dobey and myself will be the judges for this contest. We will judge based on creativity, originality and whatever we find appealing! We never said the contest will be fair, but then again, its Gerry's layout.

The available prizes are one each WALTHERS 40' gon(DRGW), 36' hopper(SOU), 40' PSI box(Pacemaker NYC), 36' hopper(C&O), 40' gon(SP), 40' box(SOU), 40' plug door refer(MILW) (all HO); and in N-Scale a 40' double door box(WAB), 40' hopper(B&O), 40' gon(CBQ) all are ROCO cars. The contest winner will get his choice of any two cars, and second place will get to choose one of the remaining cars (list top 3 choices). Third place will win something completely different. A special thanks goes to WALTHERS for supporting the TAMR and the Central Region.

Requirements for the layout include a single track mainline with passing siding(s), capable of handling a moderate amount of traffic density (6 trains a day) plus extra grain & coal trains. Twenty-four inch radius curves are a minimum, with medium length passing sidings and a moderate sized yard.

The layout is to be an around the wall type layout, Point to point operation would be interesting, but with some sort of return loop to allow continuous operation.(perhaps a hidden track) You can choose the location to model (see system map). The prairie Central is a subsidiary of the Geneva Southern, with PACY trains running through on the GSL. Operationally, the best geographic location to model would be the Albert Lea- Mason City, Ia. area. A staging yard is needed, perhaps hidden in the closet. Lots of switching is desired, both in the yard and for mainline customers.

## GENEVA SOUTHERN

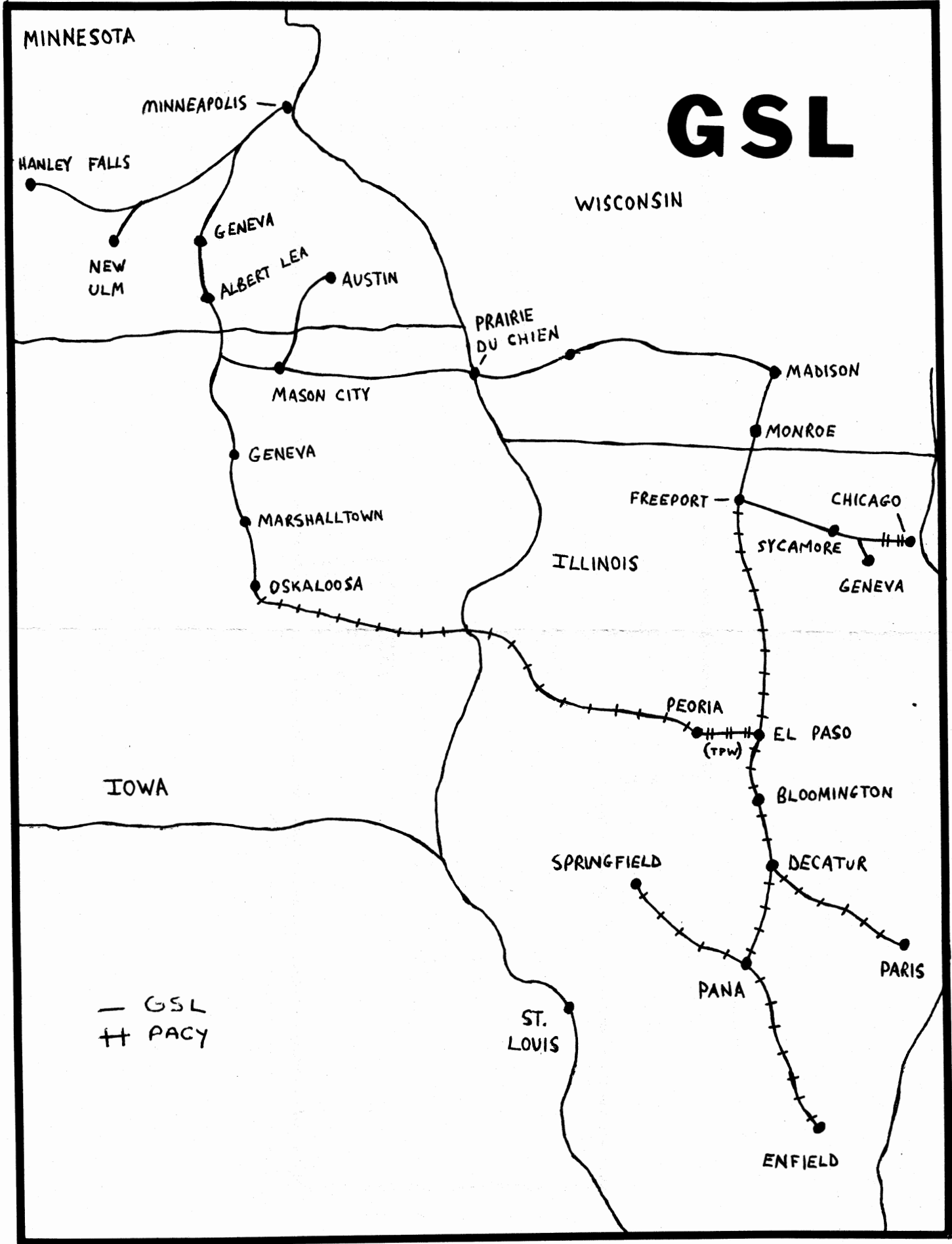
### WHERE SAFE IS JUST ANOTHER FOUR LETTER WORD

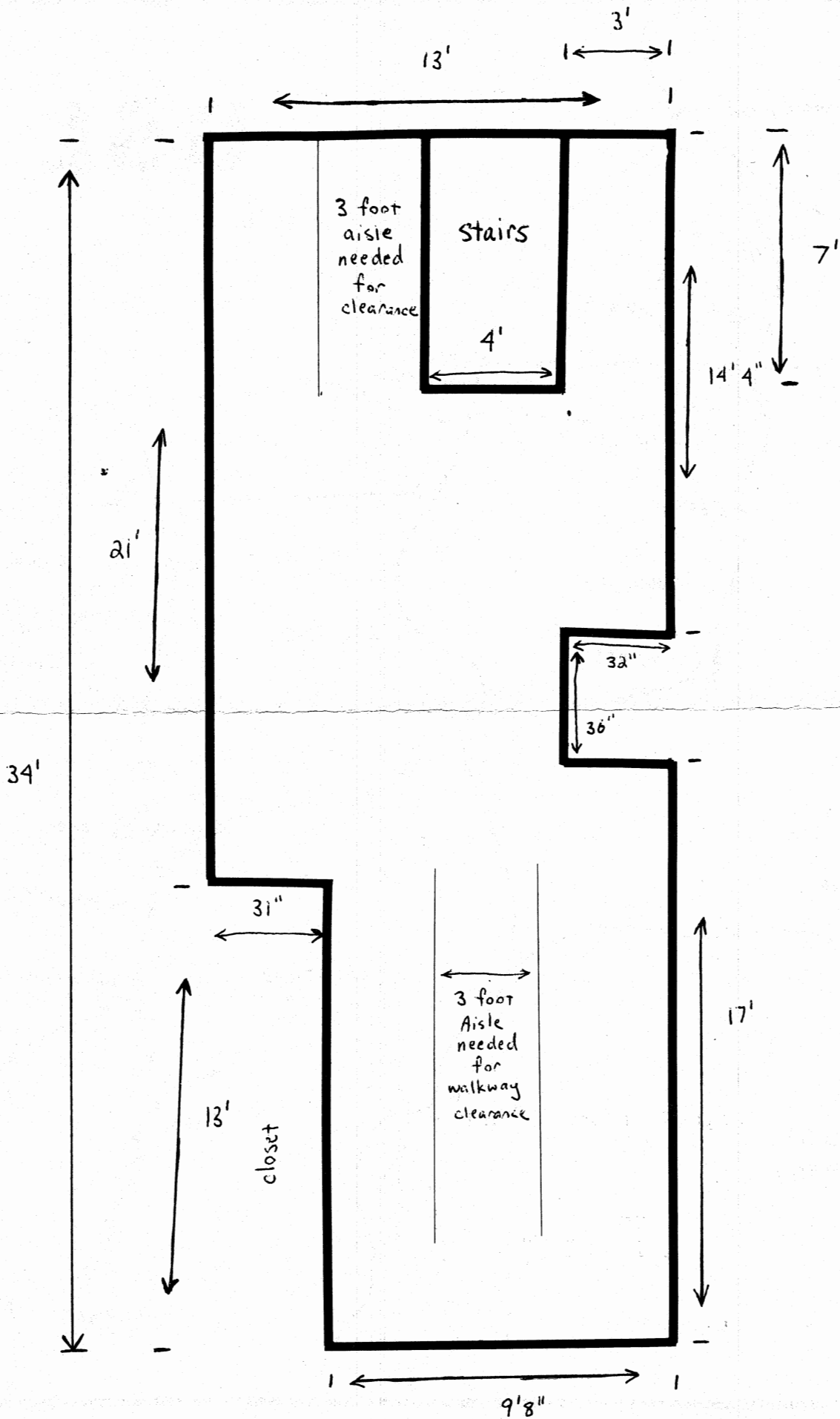
The Geneva Southern Lines / Prairie Central system is one of the original "new breed" of Regional Railroad. It was formed from the cast off pieces of the Minneapolis & St. Louis, Chicago Great Western, and Illinois Central. It is basically a system connecting southern Illinois with the upper midwest. The main commodities hauled include grain, lumber, beer and a lot of general merchandise (beer) in piggyback trailers. The system has connections with the Norfolk Southern and CSX to the south, and Burlington Northern, Duluth, Winnipeg & Pacific, Oakwood Northern, and Spooner Central to the north.

#### Locomotive Roster

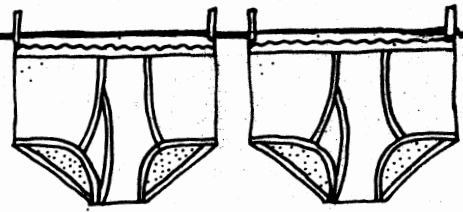
Geneva Southern Lines	SD 38-2 6200-6203 (4)	Prairie Central
KSD-12 6181-6184 (4)	F 7B 4150-4152 (3)	U 25B 2604-2606 (3)
GP 30 4230-4234 (5)	SD 45 6360-6381 (22)	U 30B 2880-2887 (8)
C-425 4000-4003 (4)	F 45 6615,6642 (2)	C 424 10-14 (5)
GP 35 4250-4269 (20)	C-628 6280-6287 (8)	GP 30 4235-4244 (10)
		SD 9m 100-111 (12)
		SD 45 600-609 (10)

# GSL





# BRIEFS



Yes, the WAYFREIGHT DOES live. It has been a while since our last issue. Our article files are empty and our reporters have not been heard from. Besides our editor? has been BUSY? roaming around Wisconsin and central Illinois. To take up some space, I will go through with my plans to present some at one time timely news, which is now out dated. Oh well, you can line the birdcage with it.

ESPEE INVASION The Southern Pacific through subsidiary Cotton Belt may soon be a major carrier into Chicago. The line has been negotiating to buy the Soo Line's Bensenville, Il to Kansas City, Mo line, along with part ownership in the Indiana Harbor Belt and ownership of related branch lines. From the southwest the invasion may continue with the purchase of the Chicago, Missouri & Western's ex-ICG nee GM&O Chicago to St. Louis main line.

BANKRUPTCY Meanwhile, the CM&W has entered bankruptcy and has been forced to layoff 100? employees related to its St. Louis to Kansas City route. Trackwork on the Chicago line continues, however, and the line has once again started repainting some locomotives in a new Nickle Plate like scheme.

FOX RIVER VALLEY Since the last issue, the FRVR has not only started operating but has purchased some more power and repainted some units. Repaints include at least one GP 9 and two SD 24's. Last Sunday's PRGBB had the two SD 24's, a GP 35 and 150 cars. The engineer wasn't happy and was heard asking for more power.

HOLY TOLEDO! The Toledo, Peoria and Western has returned! The new regional started operations last Spring? with 19 Santa Fe GP 20's. The route is the same as the old TP&W.

OAKWOOD STACKS 'EM UP The Oakwood Northern plans to begin its operation of its new double stack service soon. The new trains will travel over the Spooner Central, and may connect up with the Geneva Southern Lines' existing "Six Pack", "Twelve Pack", and "The Case" service. The rumored startup of the Spooner Central's "Tin Can" has not materialized.

BLOOMER The Bloomer Line in central Illinois has started a "rent-a-train" excursion service with a refurbished, old TP&W colored bay window caboose. Could this be the first official TAMR-Central Region excursion? Stay tuned!

HIAWATHA ! : Amtrak has expanded its Chicago to Milwaukee service dramatically. Six round trips are now offered daily, one trip being the Chicago-West Coast Empire Builder. "New" cab control cars (ex-Metroliners) have started push-pull operation on this route.

NEW OLD POWER & NEW NEW CARS : Amtrak has taken delivery of eight ex-GO Transit GP 40TC's, along with 100 Bombardier ( how do YOU pronounce it?) cars including 7 cafe cars. The modern, boxy cars are labeled the Horizon fleet.

CMNW GONE ! : The Interstate Commerce Commission has appointed the Southern Pacific (Cotton Belt) as designated operator of the Chicago, Missouri & Western. The St. Louis-Chicago line sale is expected to be OK'd and take effect on 11-8-89.

TAMR ELECTIONS : TAMR Auditor Beth Wolstenholme has been working to organize the TAMR's 1989 elections. The problem is that there are very few candidates. The job of Central Region Representative and TAMR President are up for election. If anyone is interested in either position, contact myself or Beth immediately. All that is required is some ambition and willingness to help out. The Region Representative office is very simple, and involves writing to prospective and present members, informing the rest of the TAMR about Central Region activities, and writing for the TAMR HOTBOX. Its a Great way to get involved and make friends! The Canadian Region Representative is also up for election.

MEMBERSHIP CARDS : If any TAMR member has not received his or her membership card, please contact TAMR Secretary Matt Heiman @ 3815 Stratford Lane; Louisville, Ky; 40207.

CHRISTMAS Wayfreight : Except for material submitted by Todd Werner, the WAYFREIGHT files are empty. I would like to produce a Christmas issue (seriously!), but that depends on the amount of material that I receive. It is easy to put an issue together if you have pre-written material to work with! So come on! Send something in. How about bringing your columns back to life columnists!

WELCOME NEW MEMBERS! :

Brian Brantley; Rt. 4; Box 29A; Lutesville, Mo.; 63762

@ 1989 : An UKJA Publications Production ; CR TAMR 1989

All entries for the Layout planning contest must be received by January 1, 1990. Please enter! There are Prizes!!!

The Wayfreight  
Central Region / TAMR  
4N414 3rd Ave  
Addison, Ill  
60101



FIRST CLASS MAIL

--printed matter--

