

# THE INTERCHANGE

Published every  
so often, on whim of  
editor. (whoever that  
may be!)

Editors: Greg Dahl, Tom Gasior

This is the official Publication of the Precision Wide-Vision Division of the CENTRAL REGION of the Teen Assoc. of Model Railroading. (In other words, we ain't much)

VOL II  
# 1.

Once again, the Interchange comes at you in living black and white. The upcoming year should be even better than last year for us, (it couldn't get much worse!) Our goals this year are to see if we can organize as a unit and get some things done at a regional, divisional and even a national level. Greg points out in this issue how a force the size we have in the PWVD, which now includes IOWA, at Paul Michelsons request, could help to make some changes in the TAMR for the better, but first you, yes you, have to join. The TAMR needs members, especially active members like we have in our division. The Central Region-our sponsor-also needs support and comment from its members to help it grow and make it better, so try to do your part and don't let the same people do all the work. After all, didn't you join so you could partisapate in this hobby?

This issue is mainly to tell all of our members that we are still alive, but upcomming issues we will be having specials devoted to each railroad in minnesota (and Iowa), and also we will be meeting and introducing to you each member of our division and telling you a little about them.



At left is Grand Trunk 4554, a rare dynamic brake equipped GP. It was found loitering just east of the IC mainline in Markum.

Greg Dahl photo from this summers trip with Tom Gasior and numerous other people in the Chicago area, who did a lot of loitering too.

The rash of recent hacks upon various members of the TAMR and even honest people passing by isn't meant to cut anyone down. Don't take it personally. It is just the work of demented authors who should have been committed long ago.

Random notes: Master Model Railroaders are just normal modelers who can model and chew gum at the same time.

What about the TAMR? I believe the time has come to stop hacking on it and start doing something about it. It would be easier to get changes made if we're not on the outside looking in. In 1981, when I was Auditor, only 23 people voted in the NATIONAL elections. That means anyone with 12 people backing him could have won. I know we've got more than 12 members out there so I know we can get the changes we want if we would only band together. It costs only ten dollars, I know that is half the cost of a SD40-2 but what can you do with half of a dash two? The more members that join the better we can make the Hotbox. Now, pry into your wallets and fork over some dough. I've got TAMR application blanks if anyone needs them.(G.D.)

I'd like to welcome two new members to the PWVD

JOHN WELLS  
8577 Imperial Ave. So.  
Cottage Grove ,MN 55016

TOM BOYLE  
10 E. 107th st. Cr.  
Bloomington, MN 55420

Make these guys feel like they belong. Better yet, don't treat them like we do all the other members!!

With two more members living within the metropolitan area the idea of a Divisional or even Regional meet becomes more inviting. Anybody who has some ideas, thoughts or complaints is welcome to write to me..GREG DAHL, 1649 EUCLID ST. , ST. PAUL,MN, 55106

While I'm at it I may as well publish Steve Kahl's new address for those of you trying to track him down after he moved.

STEVE KAHL  
517 W. 6th st.

Hastings, MN 55033

Once again we ask that you send any amusing stories, photos or rail news to any of the past editors of the Interchange. It'll be best to save those super, gigantic articles for a larger publication such as the Hotbox or the Wayfreight.

Also welcome the following new PWVD members that we shanched at the last Twin Cities flea market.

Eric Anderson  
3409 78th Ave. N.  
Minneapolis, MN  
55443

Mike Lunal  
7741 Beard Ave N  
Minneapolis, MN  
55443

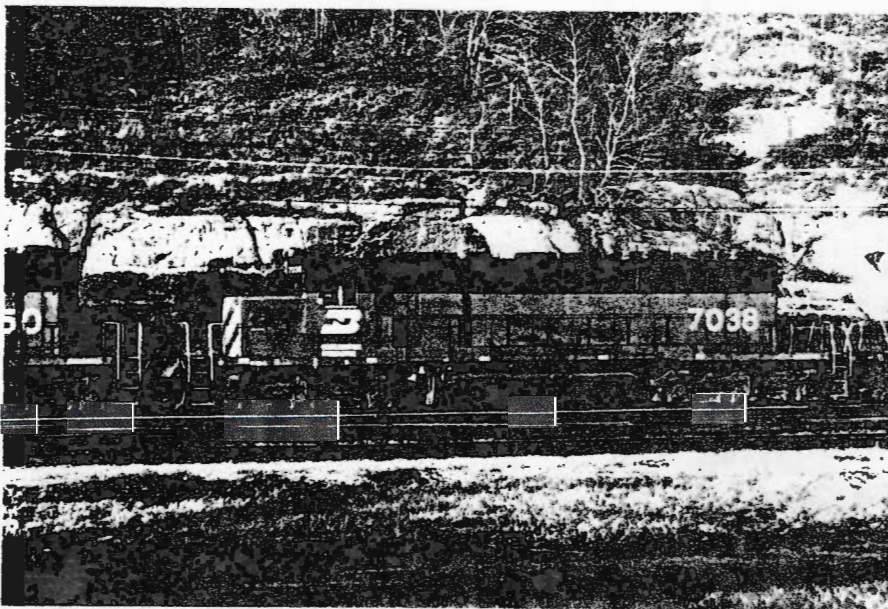
John Schramk  
Duluth MN

The idea of taking some railfan trips to far away places such as a weekend in Thunder Bay, or to Duluth or the Twin Cities has been raised. A trip to Chicago over spring break and a summer trip out West to see the BN coal operations and Union Pacific in Wyoming has also been raised. Please send us your thoughts or ideas on these trips.

PWVD Interchange ads. Your wants or old junk can now be advertised in the Interchange just like all other publications except they are published in here free of charge.

WANTED: Old Athearn, Atlas, Bachman, and Tyco engine shells for kitbashing. Tom Gasior 11800 Pheasant lane, Hopkins, Mn 55343

Wanted: MDC bathtub gons, Atlas Gp 38 or GP40 chassis. Greg Dahl 1649 Euclid st. , ST. Paul, MN 55106



To show how desperate we really are, we here at the Interchange have printed a photo of a BN SD40-2 serving time at Datons Bluff. T. Gasior is guilty of recording this eyesore. Help us by sending your photos soon or we may be forced to be even worse and publish a photo of a Milwaukee Road MP15AC .

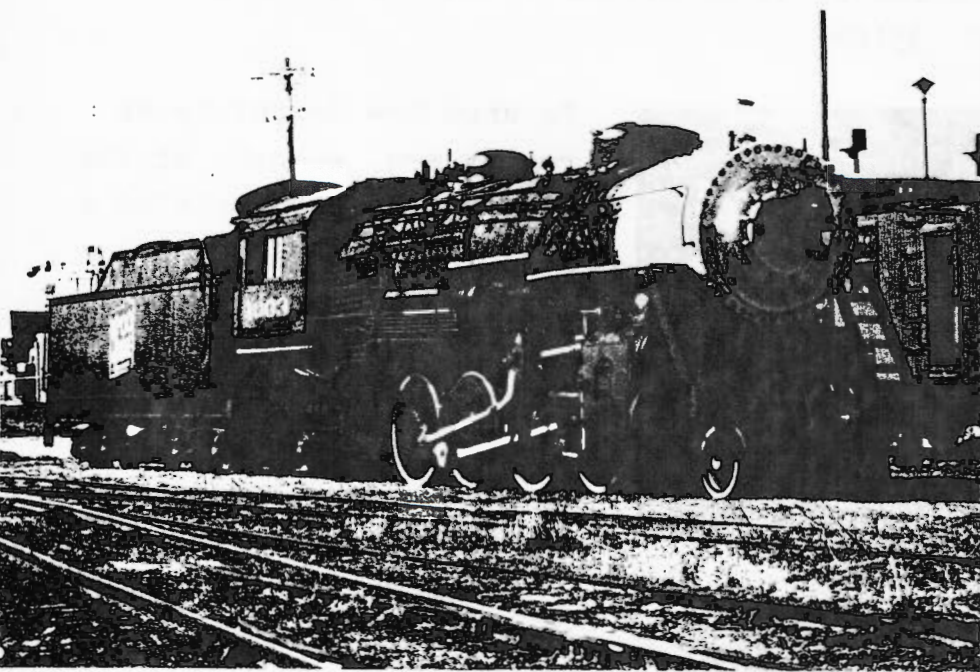


The winter flea market is fast approaching and we at PNVD headquarters want to be ready to have a get together with all our members. The meet is at the same place (Woodbury HS), and table set up at 8:00, public gets in at 9:30. It is supposed to end by around 1:30, and then we can start our official meet. I (Tom Gasior) and Jeff Scholler will have tables at the flea market, so come and look for us and say hi, we will also give you a place to stash your "goodies" while you go out and look for more.

After the flea market, we will be going railfanning and also grab something to eat. Going to local hobby shops will also be on the agenda along with some home layouts if OK'd by the people owning them. We are planning a tour of BN's Northtown shops and maybe even the Milw RD or 500.

At night, on Saturday, we will be having slide shows, bull sessions and if unavoidable.....a railbaron game. (or a railburning game!!!!)

Housing will be provided for those members from out of town as long as the people are warned in advance....(this is so Mrs. Dahl can hide her silverware.) Hope to see all of you there.



The photo at left is of a engine that was not built by EMD, is not SD40-2, and is not painted green and black!!! It has the editors confounded. The only thing we reconized is that it hauls coal, but only one hopper at a time instead of 110 in a unit train. Well, we can't figure it out, but John Vincent keeps mumbling something about the Superior Short Line Club that has restored this

thing to operating condition. Tom Gasior took this photo last fall prior to steam up. It should be running excursions this summer in Superior, Wisc.

## THE INTERCHANGE

First to .....

- ..Expose the Gerry Dobey railsloshing trip
- ..Actually hear Jeff Scoller make a decision
- ..To see John Vincent pal around with Dave Schauers
- ..Count all of Steve Kahl's locomotives
- ..Officially offend everyone in the TAMR,.in one issue.

LAST TO.....

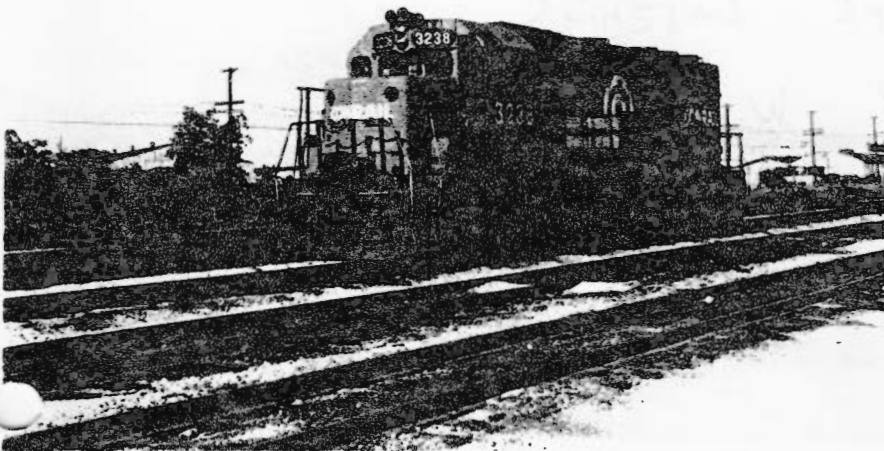
- ..Believe GSB
- ..Hear from Randy Rivers,Ken Keels, and other unimportant people.
- ..Sign up for the TAMR
- ..See Tom Gasior with long hair

Don't miss in the months to come rare,exclusive, elusive photos of.....

BN SD40's, Randy Rivers, Greg Dahl's layout, BN SD40's, Tom Gasior's mom's chocolate cake, Milwaukee Road MP15ACs, Gerry Dobey sober, Dave Schauers with his back to a Soo Line unit, BN SD40s and MUCH MUCH MORE!!!!!!

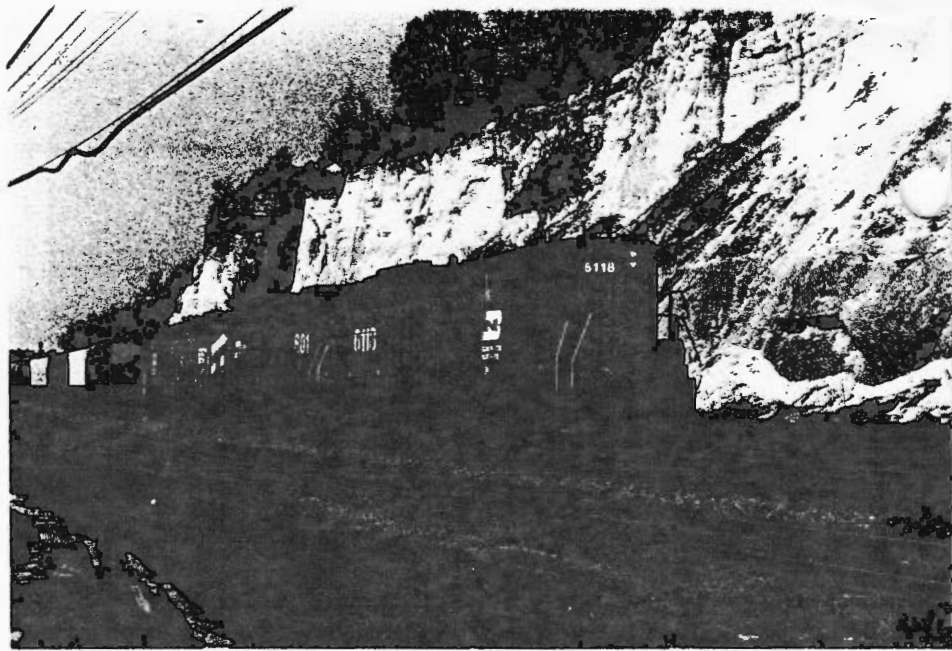
So send your check, money order,cash, Master Card Visa, Diners Club, or taconite pellets , or BN SD 40 picture TODAY.

Money back guarantee. ( Your money guaranteed not to come back)



At right is a Conrail GP40 caught loitering in Chicago by "Ace" photographer Greg Dahl.

Caught loitering at  
Daytons Bluff, St. Paul  
are two SD-9s and a  
newer B-unit. SD-9  
#6101 is ex-GN and  
is fast approaching  
it's 30th birthday.  
Photo by Greg Dahl



We would appreciate hearing from all you knuckleheads out there  
and with the heavy criticism of this issue readily available you  
have no excuse now.

G. Dahl  
1649 EUCLID st.  
ST. PAUL, MN  
55106



HELP GOODWILL INDUSTRIES  
HELP THE HANDICAPPED

